



## 43 Berkley Street

, Birmingham, B1 2LF

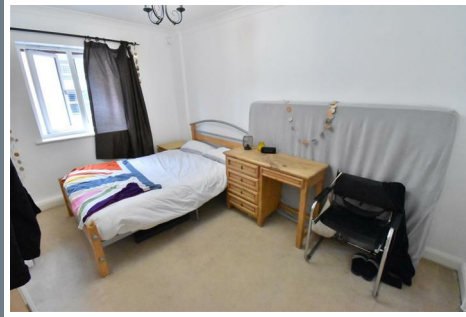
Asking price £200,000



# 43 Berkley Street

, Birmingham, B1 2LF

Asking price £200,000



HS Homes are proud to present a 2 bed, first floor apartment in the heart of Birmingham City Centre which comes with an allocated and secured parking space. Berkley Court is situated on Berkely Street, just off Broad Street, in close proximity to all local amenities. Berkely Court comprises of 2 bedrooms, 1 bathrooms, lounge and dining area and a kitchen. The apartment is double-glazed throughout and has gas central heating. This property is being sold chain free.

## On Approach

Berkley Court is situated on the first floor and has a secured entry system and secured gates to a private carpark, giving residents extra peace of mind.

## Entrance Hallway

The entrance hallway leads on to the lounge, bathroom and both bedrooms. There is a ceiling light and carpet throughout.

## Lounge Diner

The lounge and dining area has a large, double-glazed window and a Juliet balcony overlooking the communal gardens. There are 2 ceiling lights, 2 radiators and carpet throughout.

## Kitchen

The kitchen has an integrated oven, 4 ring gas hob with extractor fan, fridge freezer and a freestanding washer dryer. There are LED downlights and stone coloured wall and floor tiles throughout.

## Bathroom

The bathroom comprises of a shower over bath, sink with mixer tap and a toilet. There is a radiator, LED downlights, wall, and floor tiles throughout.

## Bedroom One

The main bedroom has a double-glazed window to the front of the apartment, with a radiator, ceiling light and carpet throughout.

## Bedroom Two

The second bedroom has a double-glazed window to the front of the apartment, with a radiator, ceiling light and carpet throughout.

## Communal Gardens

At the back of the apartments is the communal gardens. There are a variety of trees, water features, and floating steps leading to a terrace where further seating is situated.

## The Location

Berkely Court is situated in the heart of Birmingham City Centre, which hosts a wide variety of shops ranging from high street names, designer brands to small independent boutiques. It also offers an excellent selection of dining experiences too, ranging from fine dining, contemporary cafes to traditional pubs.

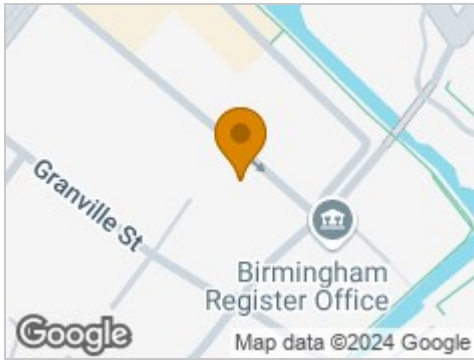
The Bull Ring Shopping Centre and Mailbox on your doorstep.

Looking to get out of the city? New Street station is 0.6 miles away, offering direct trains to London, Manchester, Bristol, Worcester, Birmingham International and many more.

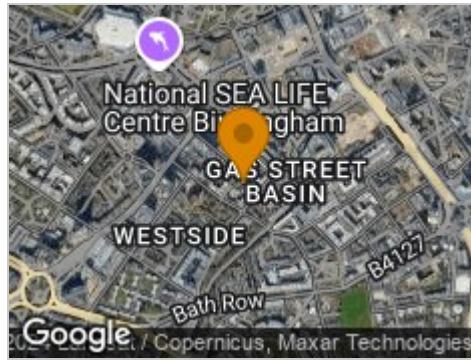
Berkley Court is ideal for first time buyers looking to be in the heart of the hustle and bustle, professionals who work in the city, or investors who are looking for buy to let properties.



## Road Map



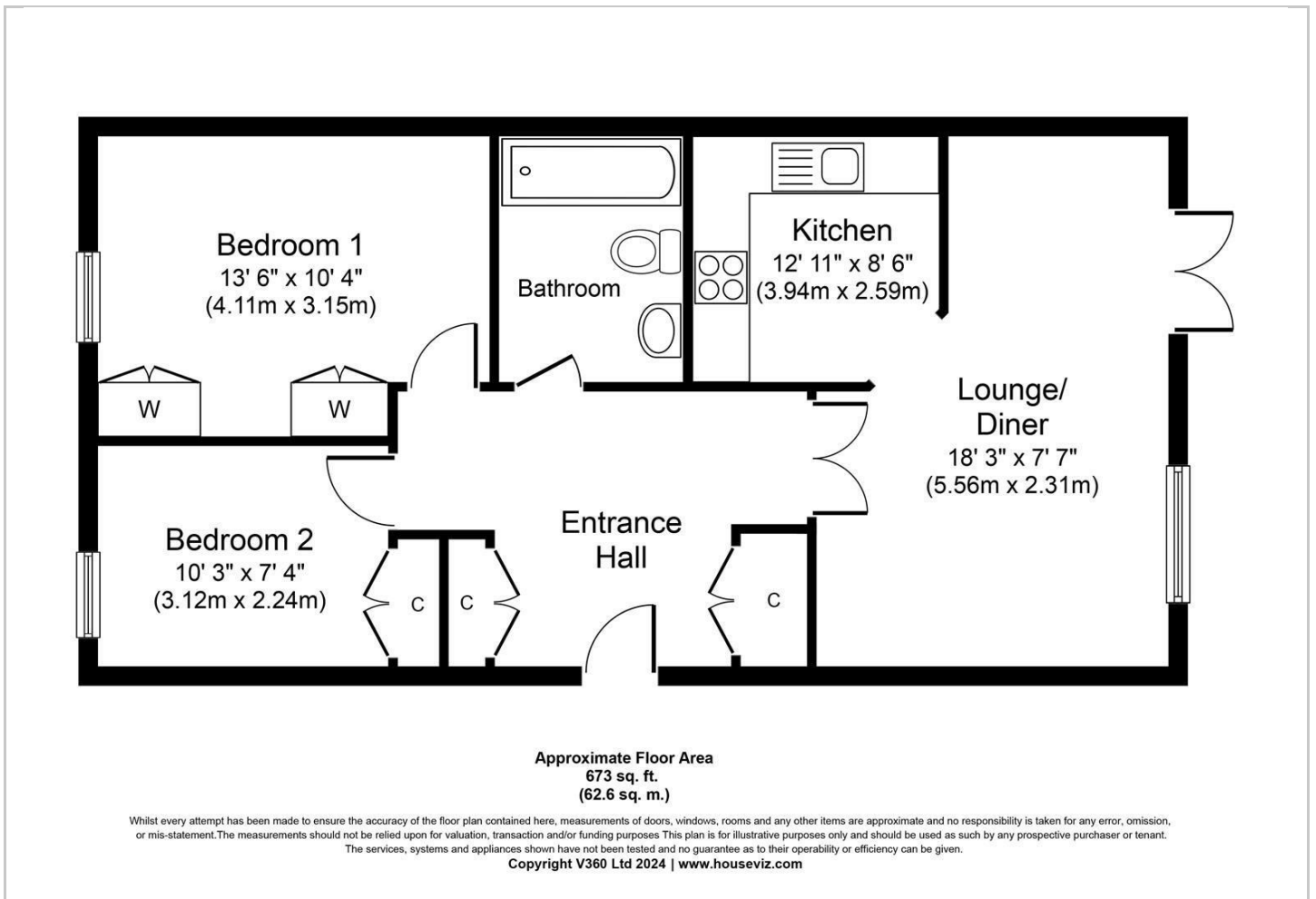
## Hybrid Map



## Terrain Map



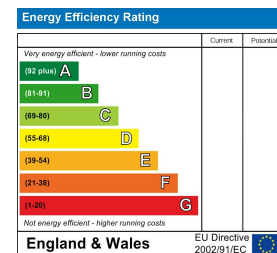
## Floor Plan



## Viewing

Please contact our HS Homes of Solihull Office on 0121 430 4448 if you wish to arrange a viewing appointment for this property or require further information.

## Energy Efficiency Graph



These particulars, whilst believed to be accurate are set out as a general outline only for guidance and do not constitute any part of an offer or contract. Intending purchasers should not rely on them as statements of representation of fact, but must satisfy themselves by inspection or otherwise as to their accuracy. No person in this firm's employment has the authority to make or give any representation or warranty in respect of the property.