



## 9 Sunbeam Way

, Birmingham, B33 0YN

Offers over £320,000



# 9 Sunbeam Way

, Birmingham, B33 0YN

Offers over £320,000



HS Homes are proud to present this modernised, extended, and well-maintained family home situated on a quiet cul-de-sac on Sunbeam Way. The home comprises of 4 bedrooms, 3 bathrooms, open plan kitchen diner and a lounge. This family home has been extended significantly and has been finished to the highest specification.

## On Approach

Sunbeam Way is situated at the end of a small and private cul-de sac of only 3 houses. There is a paved driveway with parking for up to 4 cars and wooden fence panels enclosing the front garden from the main road.

## Entrance Hallway

The hallway leads on to the kitchen diner, lounge and dining area. There is an alcove which has been built in storage for your coat and shoes. There are 2 ceiling lights, a radiator and wooden flooring throughout.

## Kitchen Diner

This extended and modernised kitchen diners comprises of a large American sized fridge freezer with ice maker, integrated double oven, microwave, 5 ring gas hob, washer, separate tumble dryer and space for a dishwasher too. With a combination of wall and floor mounted cabinets and Quartz worktops throughout. There are 2 double-glazed windows to the front with a sink and mixer tap situated underneath. With a modern style vertical radiator, LED downlights and tile flooring throughout.

## Lounge

The lounge leads on to the stairs to the first floor and the downstairs bedroom with ensuite. There are large double glazed windows and French doors leading out to the rear garden, as well as a skylight window, allowing an abundance of natural light to fill this room. With a radiator, 2 ceiling lights and wooden flooring throughout.

## Garden

This south facing and fully paved rear garden is easy to maintain and attracts full sun all day long. With a wooden shed situated at the back, gate to the side, and enclosed with wooden fence panels for full privacy.

## Bedroom One

The main bedroom is a generous sized room situated on the ground floor and has a separate dressing area along with an ensuite. There is a double-glazed window to the rear, radiator, ceiling light and wooden flooring throughout.

## Ensuite

The ensuite has an obscured double-glazed window to the side and comprises of a shower over bath, toilet, and sink with under sink storage. There is a wall mounted LED mirror, radiator, LED downlights and tile flooring throughout.

## Landing

Taking the stairs to the first floor which has a ceiling light and carpet throughout. The landing leads on to all 3 bedrooms and the family bathroom.

## Bedroom Two

The second bedroom is another generous sized room which has 2 double-glazed windows to the side and rear. With a radiator, ceiling light and wooden flooring throughout. Leading on from bedroom two is an ensuite.

## Ensuite

The ensuite has a double-glazed window to the front and comprises of a shower over bath, toilet and sink with under sink storage. There is a radiator, LED downlights and tile flooring throughout.

## Loft Room

There is also a loft room which is accessible from the second bedroom. The loft room has been fully boarded and plastered, has fully fitted electrics and lights along with a skylight window.

## Bedroom Three

The third bedroom has a built-in cupboard and shelving units which have been designed to maximise the storage space in this room. There is a double-glazed window to the rear, ceiling light, radiator and wooden flooring throughout.

## Bedroom Four

The fourth bedroom has a double-glazed window to the front, ceiling light, radiator and carpet throughout. There is another loft access point in this room which has pull down ladders leading to another partially boarded loft space for even more storage.

## Family Bathroom

The family bathroom has an obscured double-glazed window to the front and comprises of a walk-in shower, toilet and sink with under sink storage. There is a heated towel rail, LED downlights and tile flooring throughout.



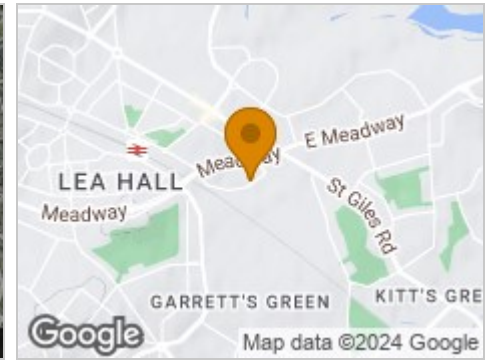
## Road Map



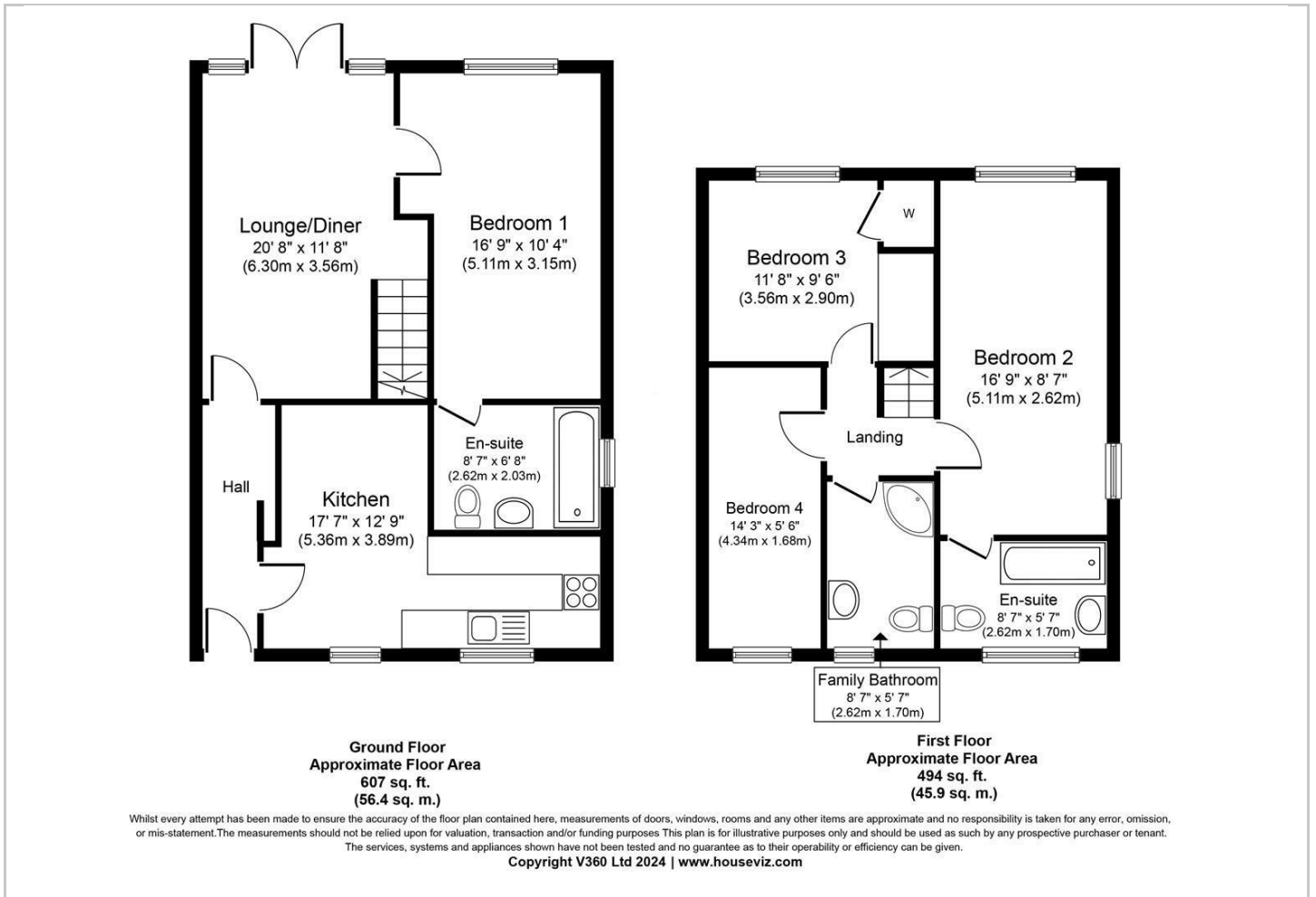
## Hybrid Map



## Terrain Map



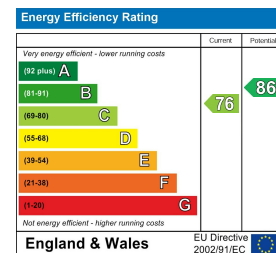
## Floor Plan



## Viewing

Please contact our HS Homes of Solihull Office on 0121 430 4448 if you wish to arrange a viewing appointment for this property or require further information.

## Energy Efficiency Graph



These particulars, whilst believed to be accurate are set out as a general outline only for guidance and do not constitute any part of an offer or contract. Intending purchasers should not rely on them as statements of representation of fact, but must satisfy themselves by inspection or otherwise as to their accuracy. No person in this firm's employment has the authority to make or give any representation or warranty in respect of the property.