

# PULLEN

ESTATE AGENTS



## 15 Belmont Lane

, Chislehurst, B27 6BH

**Guide price £650,000**

GUIDE PRICE £650,000 to £675,000

We are delighted to present this immaculate five-bedroom terrace house located on the desirable Belmont Lane in Chislehurst. Meticulously maintained and thoughtfully extended to the rear and loft, this home offers an abundance of space and modern conveniences, perfect for a growing family.

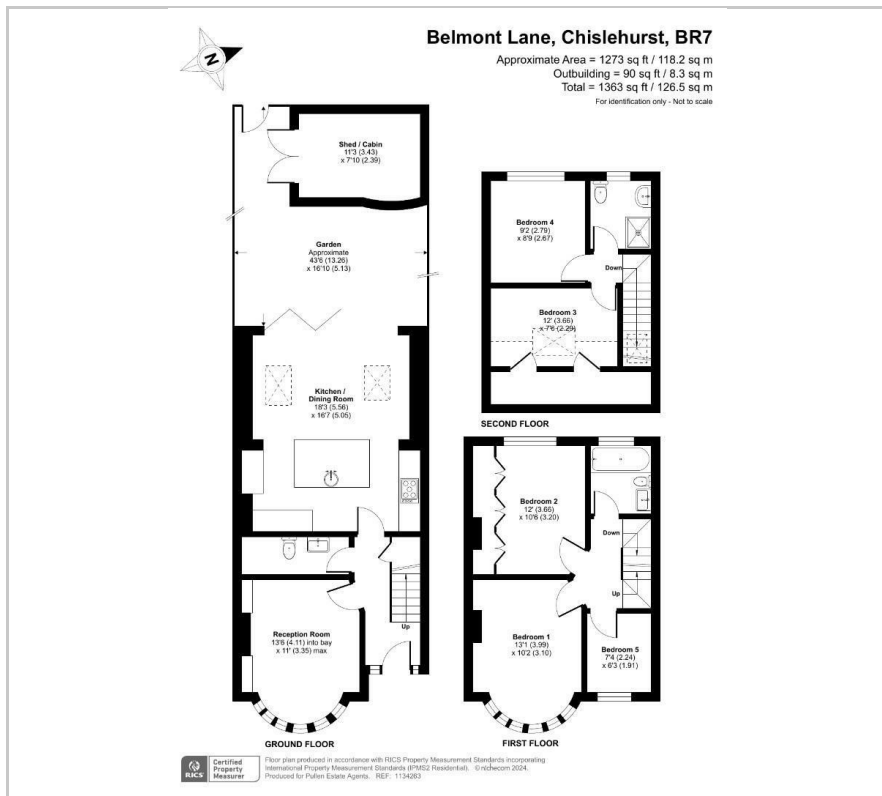
- Five bedrooms, two bathrooms
- Westerly facing garden
- Extended to the rear and original loft space
- Close proximity to Mead Road school
- Complete onward chain
- Ideal location for Chislehurst High Street
- Open plan kitchen with central island and bi-fold doors

### Viewing

Please contact our Chislehurst Office on 02034899589 if you wish to arrange a viewing appointment for this property or require further information.



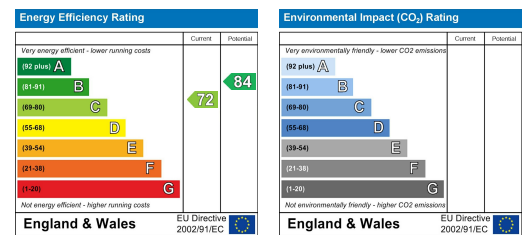
# Floor Plan



# Area Map



# Energy Efficiency Graph



These particulars, whilst believed to be accurate are set out as a general outline only for guidance and do not constitute any part of an offer or contract. Intending purchasers should not rely on them as statements of representation of fact, but must satisfy themselves by inspection or otherwise as to their accuracy. No person in this firm's employment has the authority to make or give any representation or warranty in respect of the property.