

PULLEN

ESTATE AGENTS



Flat 244, 41 Millharbour

, London, E14 9NE

£380,000

Opportunity to purchase a fantastic one bedroom unit located in the heart of Canary Wharf in a dockside development. The unit benefits from being on the 9th floor and has one large double room with built in wardrobes and allocated gated parking.

- Double bedroom
- Concierge service
- Heating/Gas and Water charges incl within annual Service Charge costs
- Master Bedroom with Ensuite Bathroom
- Neutral decor
- Modern Kitchen
- Additional separate w/c
- Viewing Highly Recommended

Viewing

Please contact our Chislehurst Office on 02034899589 if you wish to arrange a viewing appointment for this property or require further information.



1



1

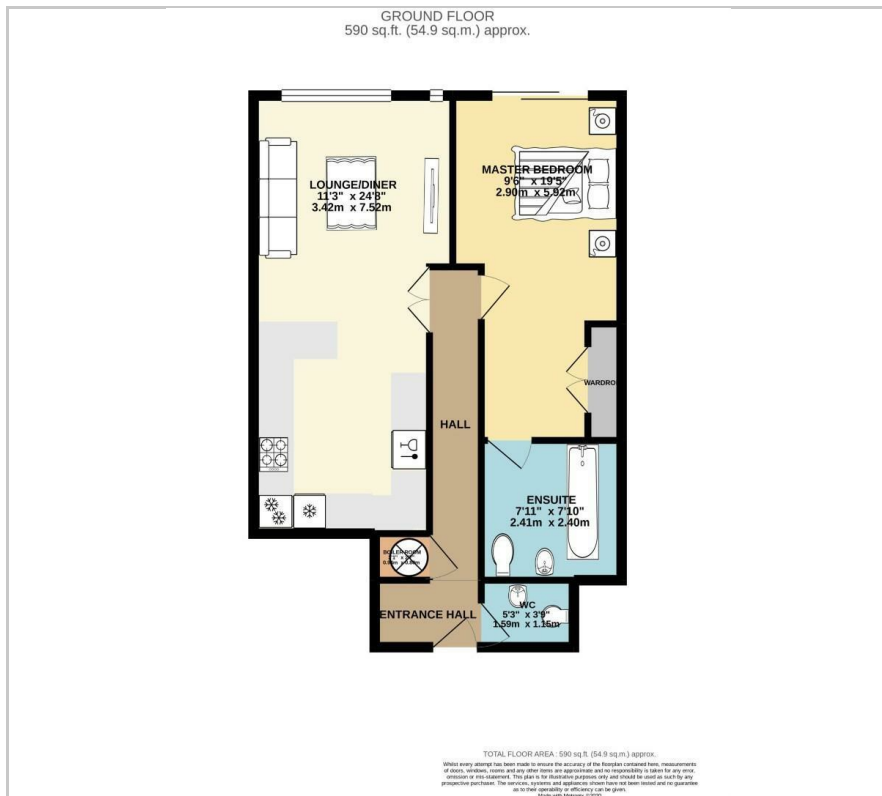


null

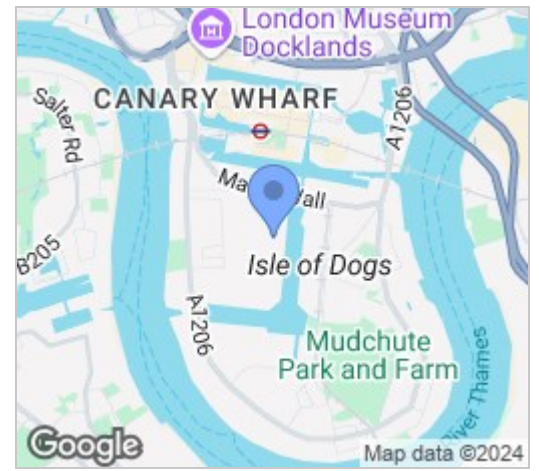


C

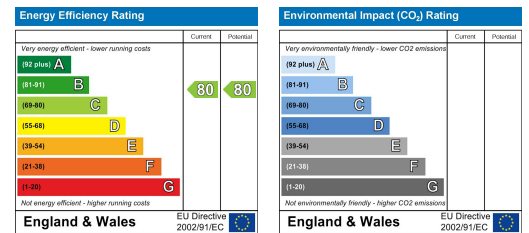
Floor Plan



Area Map



Energy Efficiency Graph



These particulars, whilst believed to be accurate are set out as a general outline only for guidance and do not constitute any part of an offer or contract. Intending purchasers should not rely on them as statements of representation of fact, but must satisfy themselves by inspection or otherwise as to their accuracy. No person in this firm's employment has the authority to make or give any representation or warranty in respect of the property.