



27 Ladbrooke Crescent

, Sidcup, DA14 4RU

£650,000

CHAIN FREE

Situated in a popular residential road, is this extended end of terrace house which offers an abundance of accommodation across two floors. The property benefits from backing onto the picturesque 'Five Arches' and offers fantastic access to the popular Royal Park Primary School as well as Albany Park mainline station, serving an array of London termini.

Internal viewing is essential to fully appreciate all that this delightful family home has to offer.

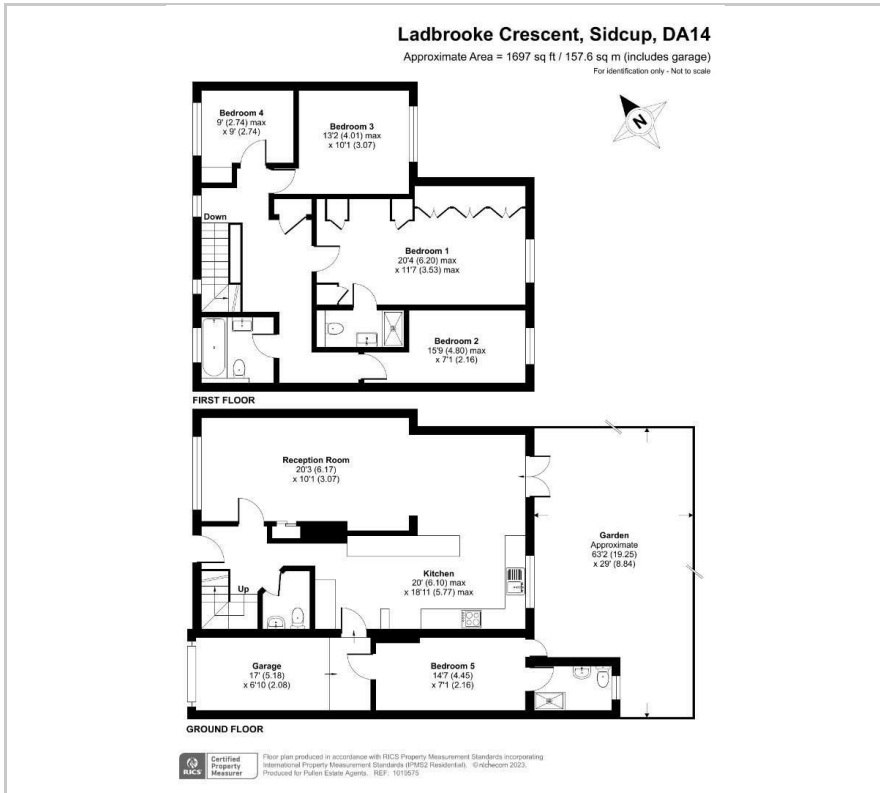
Viewing

Please contact our Chislehurst Office on 02034899589 if you wish to arrange a viewing appointment for this property or require further information.

- Extended
- Available immediately
- Unfurnished
- Three bathrooms
- Albany Park station



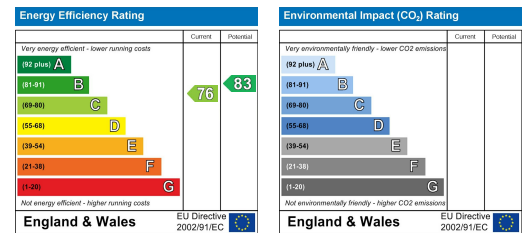
Floor Plan



Area Map



Energy Efficiency Graph



These particulars, whilst believed to be accurate are set out as a general outline only for guidance and do not constitute any part of an offer or contract. Intending purchasers should not rely on them as statements of representation of fact, but must satisfy themselves by inspection or otherwise as to their accuracy. No person in this firm's employment has the authority to make or give any representation or warranty in respect of the property.