



16 Helegan Close

, Orpington, BR6 9XJ

£575,000

Situated in the popular Helegan Close is this extremely well presented, three bedroom, two bathroom semi detached house boasting a Southwesterly facing garden. The enviable location is ideal for Orpington & Chelsfield mainline station, as well as a number of Highly regarded schools which include St Olaves, Newstead Woods and Warren Road.

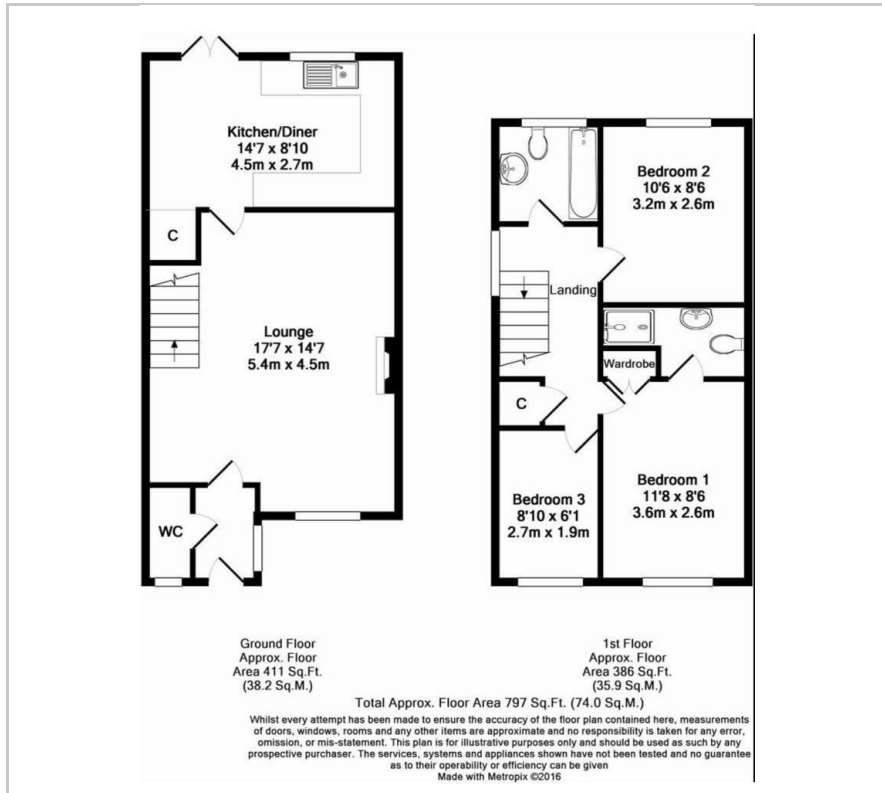
- Chain Free
- Highly regarded local schools
- 1 Ensuite shower room, 1 Bath & 1 WC
- SouthWest facing garden
- Allocated parking for 2 cars
- Access to Orpington and Chelsfield mainline stations

Viewing

Please contact our Chislehurst Office on 02034899589 if you wish to arrange a viewing appointment for this property or require further information.



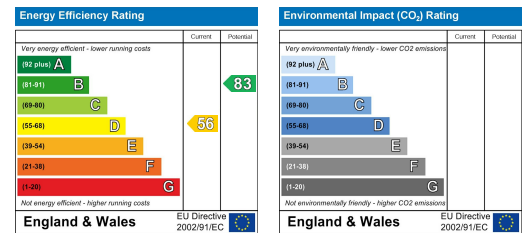
Floor Plan



Area Map



Energy Efficiency Graph



These particulars, whilst believed to be accurate are set out as a general outline only for guidance and do not constitute any part of an offer or contract. Intending purchasers should not rely on them as statements of representation of fact, but must satisfy themselves by inspection or otherwise as to their accuracy. No person in this firm's employment has the authority to make or give any representation or warranty in respect of the property.