



## 25 Maple Close, Stockport, SK2 6HJ

Harratts Property Services is delighted to present this charming three-bedroom terraced house, situated in the peaceful cul-de-sac of Maple Close.

Located just off Canada Street, this property is perfectly suited for both young professionals and families. Maple Close offers excellent access to the town center, with convenient transport links and easy connections to the motorway network, making commuting and travel hassle-free.

The ground floor features a spacious living room, which seamlessly transitions into an open-plan kitchen and dining area. The kitchen is equipped with modern appliances and ample storage, offering a perfect blend of style and practicality. This area also provides access to the integral garage for added convenience, while rear patio doors lead to the garden, allowing natural light to flood the space and providing a lovely outdoor retreat.

Upstairs, you'll find three generously sized double bedrooms, each offering plenty of space. The upper floor also includes a well-appointed bathroom and a separate WC, effectively meeting the needs of the household.

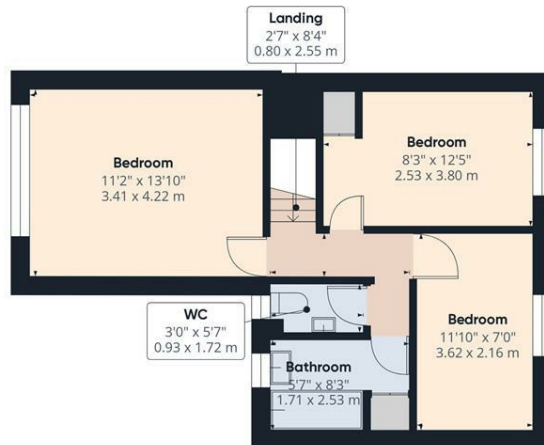
Externally, the property boasts a large driveway at the front, providing off-road parking and enhancing the overall appeal of the home.

- Three Bed Terrace Property
- Three Double Bedrooms
- Open Plan Kitchen/Diner
- Garage For Extra Storage
- Located On A Quiet Cul-De-Sac
- Rear Patio/ Lawn Garden
- Close To Local Schools And Colleges
- Vendor Has Onward Purchase Agreed

**£300,000**



Floor 0



Floor 1

Approximate total area<sup>(1)</sup>  
995.88 ft<sup>2</sup>  
92.52 m<sup>2</sup>

(1) Excluding balconies and terraces

While every attempt has been made to ensure accuracy, all measurements are approximate, not to scale. This floor plan is for illustrative purposes only.

Calculations are based on RICS IPMS 3C standard.

GIRAFFE360

