



## 15 Greave Road, Offerton, Stockport, SK1 4JN

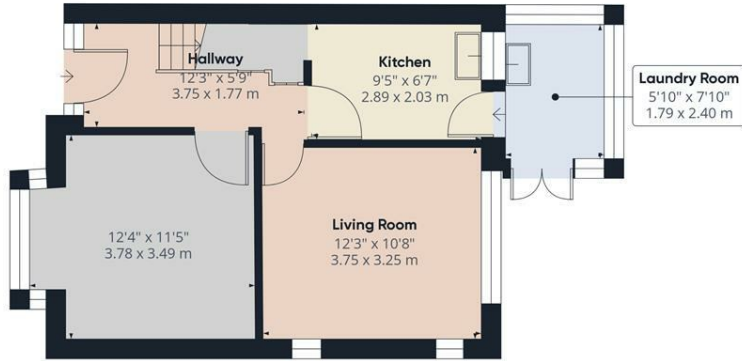
Harratts Property Service is delighted to present this lovely detached property. Located in the popular area of Offerton, this exceptional value family home offers convenience with its close proximity to shops, schools, and motorway access. With off-road parking and a detached structure, this property presents the perfect opportunity to put your own personal touch on it as it requires updating. The absence of a chain adds further appeal to this delightful family home.

Upstairs, you will find three bedrooms and a family bathroom, providing ample space for your family. The presence of driveway parking at the front adds to the convenience of this lovely property. In addition to its practicality, the property features two reception rooms, adding to its charm and appeal.

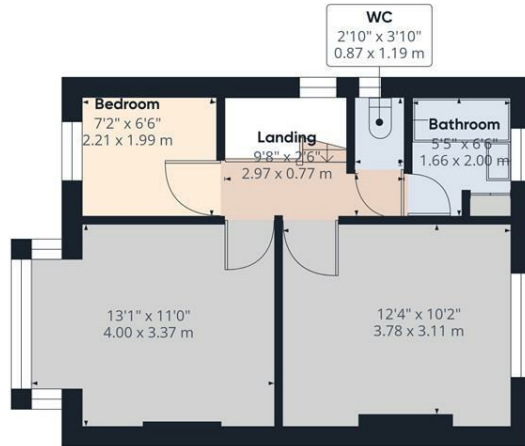
We highly recommend interested parties to arrange an immediate appointment to view this remarkable home. With its superb value for money, the potential of this property is truly worth exploring. Don't miss out on the opportunity to make this house your own and create lasting memories with your loved ones

- **\*\*\*NO CHAIN\*\*\***
- **Three Bedroom Detached Property**
- **Driveway**
- **Great Size Rear Garden**
- **Close To Great Local Schools And Transport Links**
- **Viewing Highly Recommended**

**£315,000**



Floor 0



Floor 1

Approximate total area<sup>m</sup>  
851.3 ft<sup>2</sup>  
79.09 m<sup>2</sup>

(1) Excluding balconies and terraces

While every attempt has been made to ensure accuracy, all measurements are approximate, not to scale. This floor plan is for illustrative purposes only.

GIRAFFE 360

Energy Efficiency Rating		Current	Potential
Very energy efficient - lower running costs			
(92 plus) <b>A</b>			
(81-91) <b>B</b>			
(69-80) <b>C</b>			
(55-68) <b>D</b>			
(39-54) <b>E</b>			
(21-38) <b>F</b>			
(1-20) <b>G</b>			
Not energy efficient - higher running costs			
<b>England &amp; Wales</b>	EU Directive 2002/91/EC		

Environmental Impact (CO <sub>2</sub> ) Rating		Current	Potential
Very environmentally friendly - lower CO <sub>2</sub> emissions			
(92 plus) <b>A</b>			
(81-91) <b>B</b>			
(69-80) <b>C</b>			
(55-68) <b>D</b>			
(39-54) <b>E</b>			
(21-38) <b>F</b>			
(1-20) <b>G</b>			
Not environmentally friendly - higher CO <sub>2</sub> emissions			
<b>England &amp; Wales</b>	EU Directive 2002/91/EC		