



8 Abbey Grove, Stockport, SK1 4HD

Block Viewing - Friday 22nd March - 3pm till 5pm - Please call to get a time.

Introducing this charming three-bedroom semi-detached property, brought to you by Harratts Property Services. Nestled within a delightful cul-de-sac, this home offers convenient access to local amenities, including shops and commuter links. Although some cosmetic updates are needed, this property presents a wonderful opportunity for a growing family to personalize and make it their own.

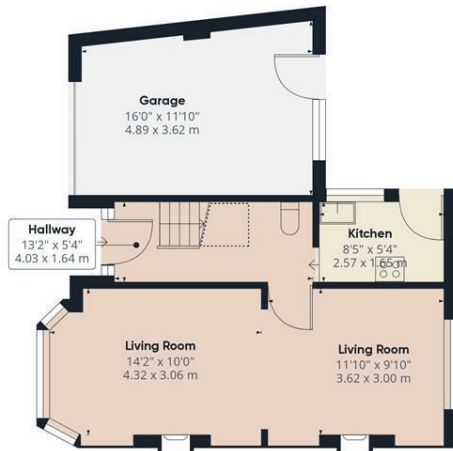
Step inside to discover a well-appointed living space, featuring an enclosed entrance porch, a welcoming hall, an open-plan living/dining area, a rear kitchen, and an attached garage. Ascend to the first floor via the landing, where you will find three bedrooms and a bathroom suite complete with a shower cubicle.

The rear of the property boasts a south-facing garden with endless potential, perfect for all your outdoor aspirations. At the front, a driveway and a front lawn area await, offering the possibility of creating a double driveway.

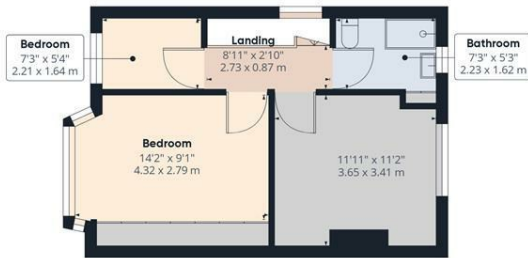
Don't miss out on this incredible opportunity! To arrange a viewing, please contact our office at 0161 7911350.

- *****NO CHAIN*****
- **Three Bedroom Semi-Detached With Garage**
- **Front And Large Rear Garden**
- **Close To Amenities**
- **Great Local Schools Nearby**
- **Walking Distance To Woodbank Park**

£230,000



Floor 0



Floor 1

Approximate total area⁽¹⁾

972.49 ft²
90.35 m²

Reduced headroom

13.36 ft²
1.24 m²

(1) Excluding balconies and terraces

☐ Reduced headroom
(below 1.5m/4.92ft)

While every attempt has been made to ensure accuracy, all measurements are approximate, not to scale. This floor plan is for illustrative purposes only.

GIRAFFE 360

