



23 Maxwell Avenue, Stockport, SK2 7QD

Introducing this charming three-bedroom semi-detached house, proudly presented by Harratts Property Services, situated in the highly sought-after area of Great Moor. Offering ample space for a growing family, this property is conveniently located within a short walking distance of Great Moor Village, Stepping Hill Hospital, and Great Moor Primary School.

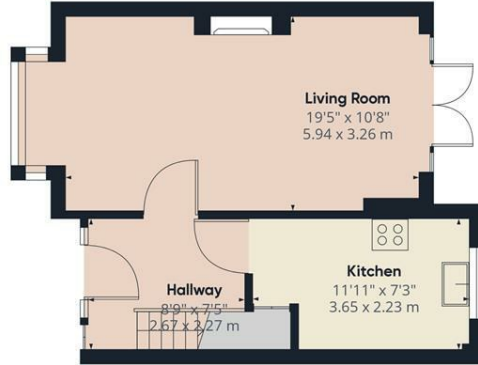
While this property may require some modernization, it presents an excellent opportunity for the new owner to customize it according to their personal taste and specifications. The generously proportioned living area features a welcoming hall, a spacious lounge/dining room with patio doors that open up to the expansive rear garden, and a well-appointed kitchen.

Moving upstairs, you will find a landing area leading to three bedrooms, two of which are double-sized, providing plenty of room for relaxation and rest. Additionally, there is a family bathroom complete with a separate W/c, ensuring convenience for the entire household.

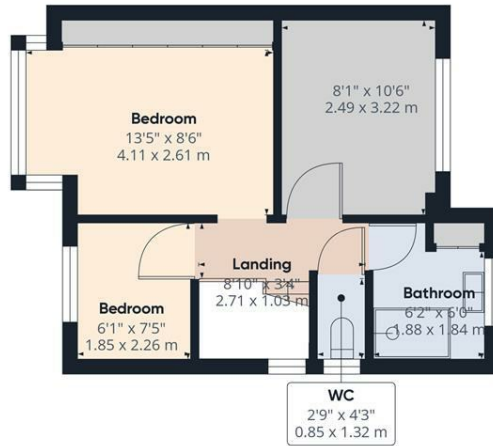
Benefiting from gas central heating and uPVC double glazing, this home ensures year-round comfort and energy efficiency. Outside, the property boasts a sizeable enclosed rear garden, perfect for children to play and enjoy

- *****NO CHAIN*****
- **Convenient and Popular Cul De Sac Location**
- **Three Bed Semi Detached House**
- **Gas Central Heating And uPVC Double Glazing**
- **Front And Rear Garden**
- **Close To Great Local Schools**

£269,995



Floor 0



Floor 1

Approximate total area⁽¹⁾
728.4 ft²
67.67 m²

(1) Excluding balconies and terraces

While every attempt has been made to ensure accuracy, all measurements are approximate, not to scale. This floor plan is for illustrative purposes only.

GIRAFFE 360

