



9 Gillwood Drive, Romiley, Stockport, SK6 3EJ

Harratts Property Services presents this detached bungalow for sale with no 'ONWARD CHAIN' in the popular area of Romiley .

This property would be perfect for INVESTORS due to the size of the plot of land and the potential to build TWO semi-detached bungalows as seen in the photos or to make into a perfect family home with its current foundations.

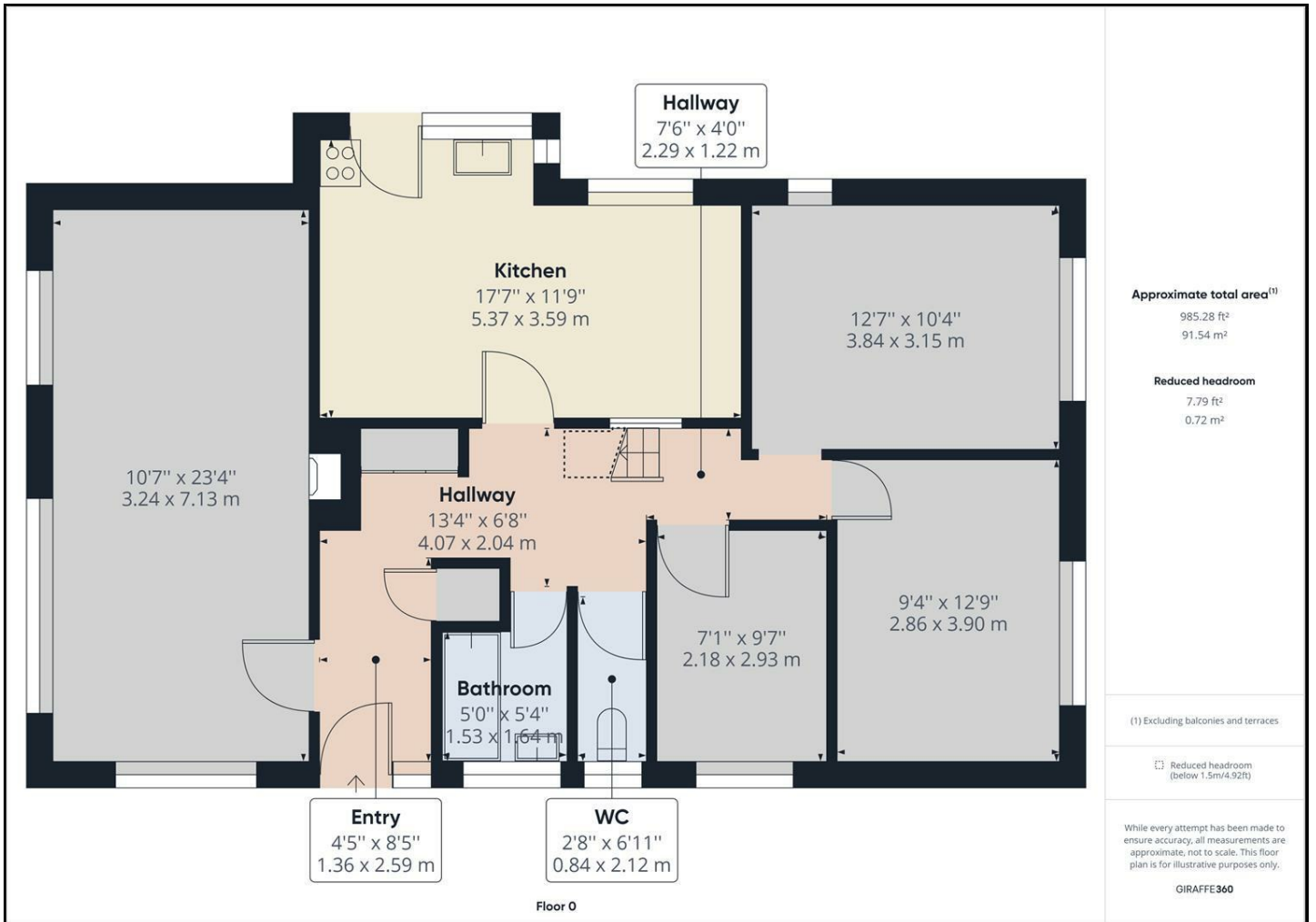
This property has bags of potential and is in need of a full refurbishment and modernisation. This house has a large lounge area, Three great sized bedrooms and a kitchen/dining area as well as the bathroom and separate toilet.

The outside has a large front and rear garden area and a detached garage.

If you are looking for a project don't hesitate to contact our office to discuss a viewing.

- *****NO CHAIN*****
- Detached Bungalow
- Large Plot Of Land
- Perfect for Investors/Builders
- Popular Location
- Close To Great Local Schools

£280,000



Energy Efficiency Rating		Current	Potential
Very energy efficient - lower running costs			
(92 plus) A			
(81-91) B			
(69-80) C			
(55-68) D			
(39-54) E			
(21-38) F			
(1-20) G			
Not energy efficient - higher running costs			
England & Wales		EU Directive 2002/91/EC	

Environmental Impact (CO ₂) Rating		Current	Potential
Very environmentally friendly - lower CO ₂ emissions			
(92 plus) A			
(81-91) B			
(69-80) C			
(55-68) D			
(39-54) E			
(21-38) F			
(1-20) G			
Not environmentally friendly - higher CO ₂ emissions			
England & Wales		EU Directive 2002/91/EC	