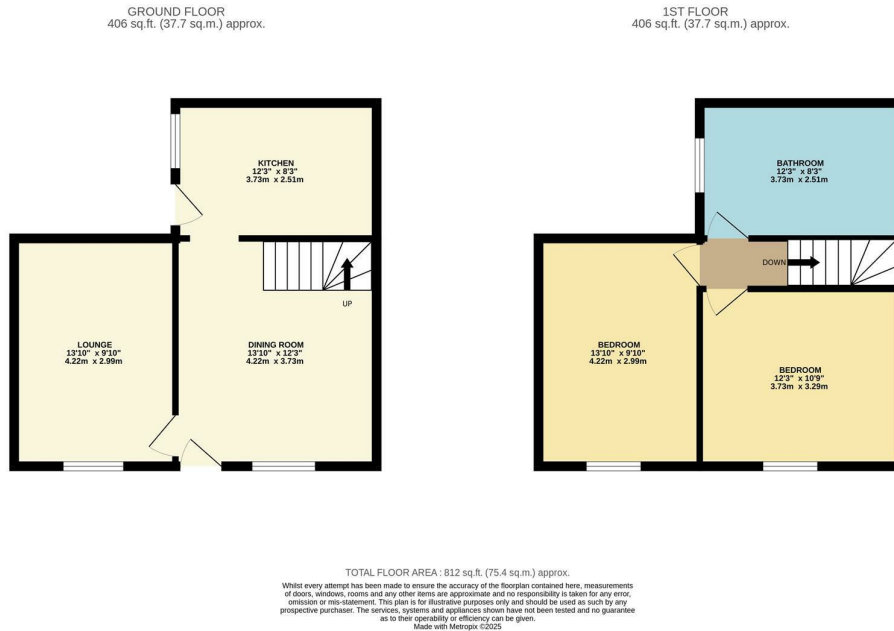


13 Beaconsfield Street, Leamington
Guide Price £375,000

charlesrose.



An attractive double fronted Victorian terrace house, set in a sought-after part of town close to Newbold Comyn. The property has been sympathetically refurbished by the current owner, retaining character features while offering stylish modern touches throughout.

The ground floor includes two reception rooms with original timber flooring and a smartly refitted kitchen. On the first floor, there are two well-proportioned double bedrooms and a stunning bathroom featuring a standalone bath, separate shower, original cast iron fireplace, and an exposed brick wall.

Outside, the enclosed rear garden is a lovely space with decked and paved areas—ideal for relaxing or entertaining. A charming period home in a prime location.

charlesrose.

- 01926 832411
- hello@charlesrose.co.uk
- charlesrose.co.uk

