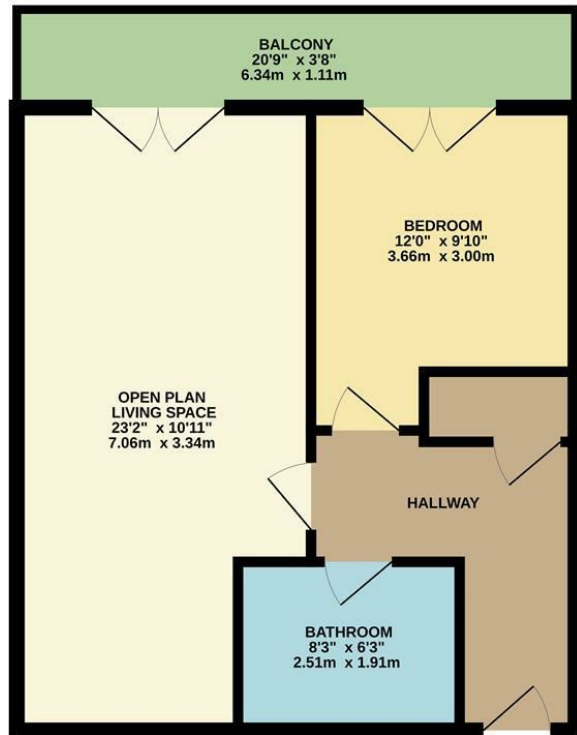


GROUND FLOOR
482 sq.ft. (44.8 sq.m.) approx.



TOTAL FLOOR AREA - 482 sq.ft. (44.8 sq.m.) approx.
Whilst every attempt has been made to ensure the accuracy of the floorplan contained here, measurements of doors, windows, rooms and any other items are approximate and no responsibility is taken for any error, omission or mis-statement. This plan is for illustrative purposes only and should be used as such by any prospective purchaser. The services, systems and appliances shown have not been tested and no guarantee as to their operability or efficiency can be given.
Made with Metropix ©2024.

Apartment 6, 26, Victoria
Offers Over £200,000

charlesrose.



An opportunity to buy a town centre apartment having a south facing balcony, overlooking the town hall. The well presented accommodation consists of an open plan living space, double bedroom and a bathroom. The property is situated in the heart of Leamington Spa, being well placed for the bars, restaurants, shops and the train station. It further benefits from an allocated, secure, underground parking space and is offered for sale with no onward chain.

charlesrose.

- 01926 832411
- info@charlesroseproperties.co.uk
- www.charlesroseproperties.co.uk

