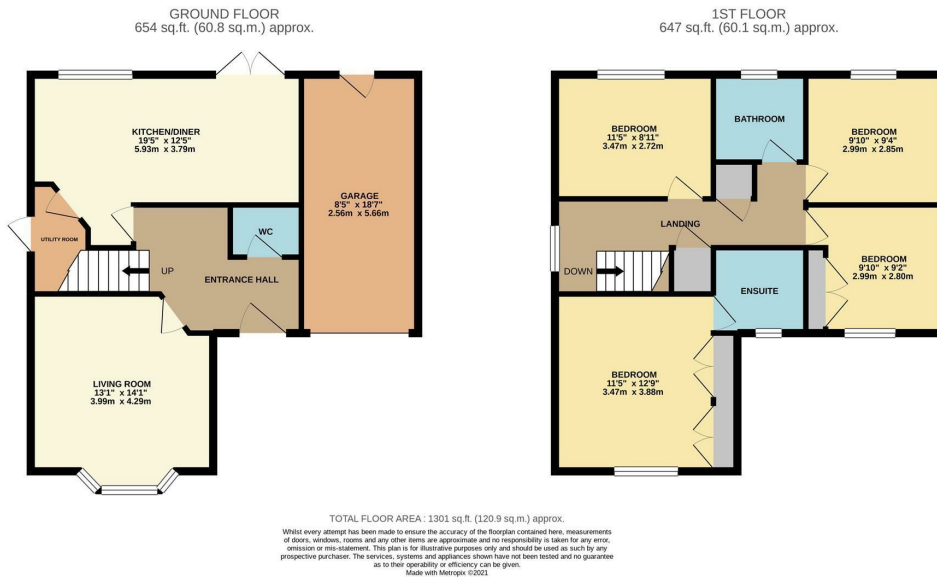


2 Priors Grove Close, Warwick  
Asking Price £500,000

charlesrose.



A fantastic and very well looked after 4 double bedroom detached family home, located on the sought after Chase Meadow development. Downstairs the property comprises, entrance hall, kitchen diner, spacious living room, w.c. and an integral garage. Upstairs are 4 double bedrooms, with the main bedroom benefitting from an ensuite, and a family bathroom. To the rear of the property includes an extremely pleasant garden and to the front is a small garden and a paved driveway for two vehicles.

charlesrose.

- 01926 832411
- [info@charlesroseproperties.co.uk](mailto:info@charlesroseproperties.co.uk)
- [www.charlesroseproperties.co.uk](http://www.charlesroseproperties.co.uk)

