



HIVE

HILL VIEW
LOCARNO ROAD
SWANAGE
BH19 1HY



presented by
COLIN CATTERMOLLE
HIVE Partner for Swanage
01929 408 419



Agent's introduction

This beautifully designed five bedroom detached home is in a sought-after location. Situated on a private road, off a quiet cul-de-sac, just a short walk from Swanage town centre and seafront. Spanning approximately 2,000 sq. ft. across three floors, the versatile layout is ideal for modern living, home working, or even as an Airbnb opportunity. The property also has breathtaking views of the Purbeck Hills and Ballard Down.







Property highlights

Contemporary high specification kitchen with separate utility room

Five spacious double bedrooms

Three en-suite shower rooms, plus a family bathroom and downstairs cloakroom

Walk in wardrobe to principal bedroom

Stunning mezzanine on the first and second floor

Landscaped terrace garden

Off road parking

Six years remaining on a structural warranty





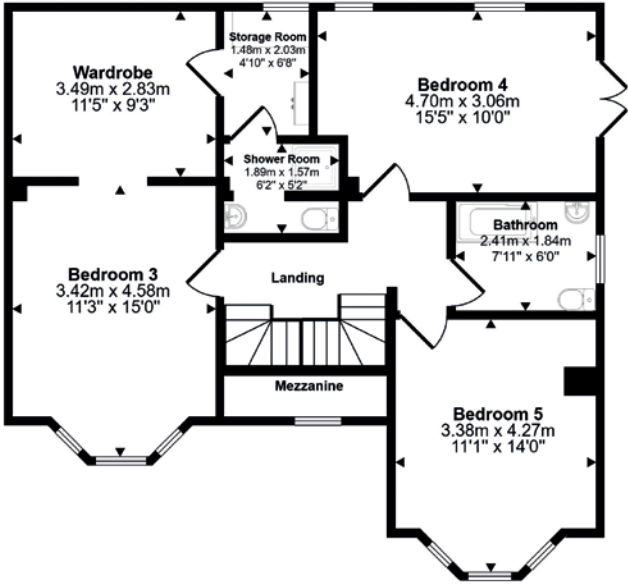
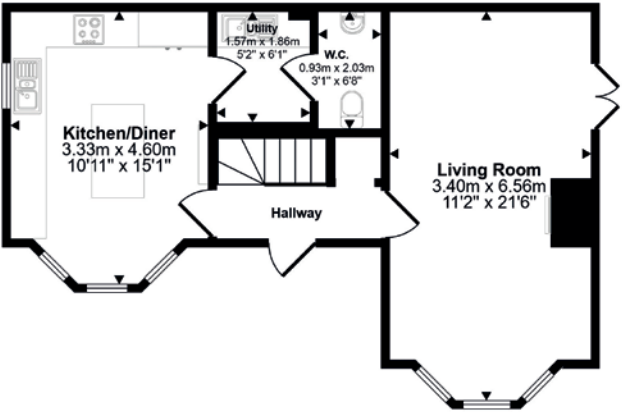
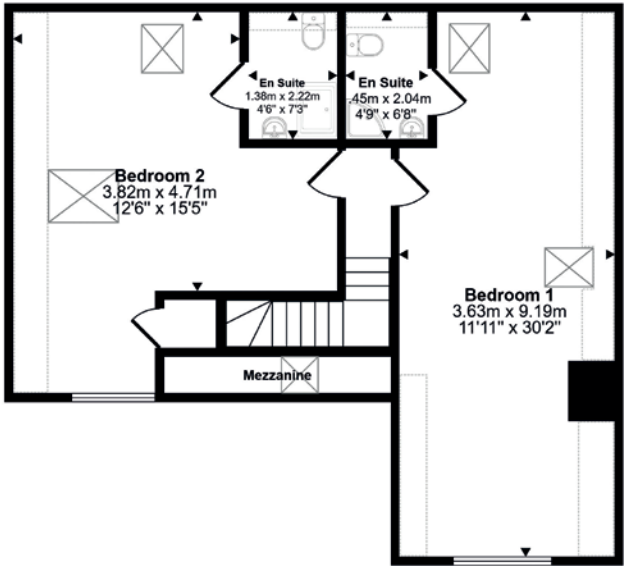
COLIN CATTERMOLLE
HIVE Partner for Swanage

This lovely three storey property has been built to a high specification, combining classic brick and Purbeck stone detailing under a slate roof. With its proximity to the beach, spectacular views and spacious, well presented accommodation, early viewing is highly recommended to appreciate all this property has to offer.



Scan the QR code for my latest property listings and social channels.

Approx Gross Internal Area
193 sq m / 2078 sq ft



Ground Floor
Approx 47 sq m / 503 sq ft

Denotes head height below 1.5m

First Floor
Approx 74 sq m / 800 sq ft

This floorplan is only for illustrative purposes and is not to scale. Measurements of rooms, doors, windows, and any items are approximate and no responsibility is taken for any error, omission or mis-statement. Icons of items such as bathroom suites are representations only and may not look like the real items. Made with Made Snappy 360.





HIVE & Partners, Swanage c/o The Hive, Wilson House, 2 Lorne Park Road, Bournemouth BH1 1JN
01929 408 419 | www.hiveandpartners.co.uk