



HIVE

12 OLD CASTLE ROAD
WEYMOUTH
DT4 8QB



presented by
JAMES FARRAN
HIVE Partner for Dorchester/Weymouth
01305 571 757



Agent's introduction

This spacious period home has been recently restored and upgraded by the current owners with full redecoration, including flooring, and a new kitchen. The property is just a short walk from Sandsfoot Beach and Castle, with links to the Rodwell Trail and South West Coastal Path; the perfect spot for walkers and water sports enthusiasts.

Seller's introduction

We shall certainly miss living here. We have everything we need close by, the shops, bus stops and beautiful coastal walks. Our garden has been our haven too, there's plenty of flower beds and a large vegetable patch that have kept us busy!







Property highlights

Recently refurbished

Bay windows in the living room
and principal bedroom

Log burner

Large enclosed rear garden with
side access

Off road parking

Solar panels and EV charger

No chain

0.5 miles from the beach





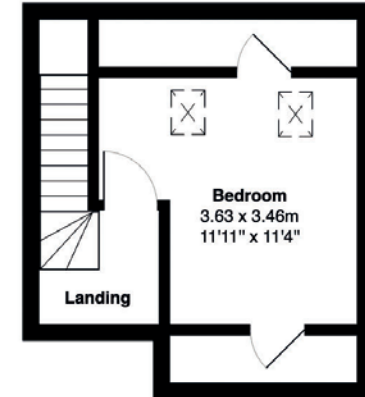
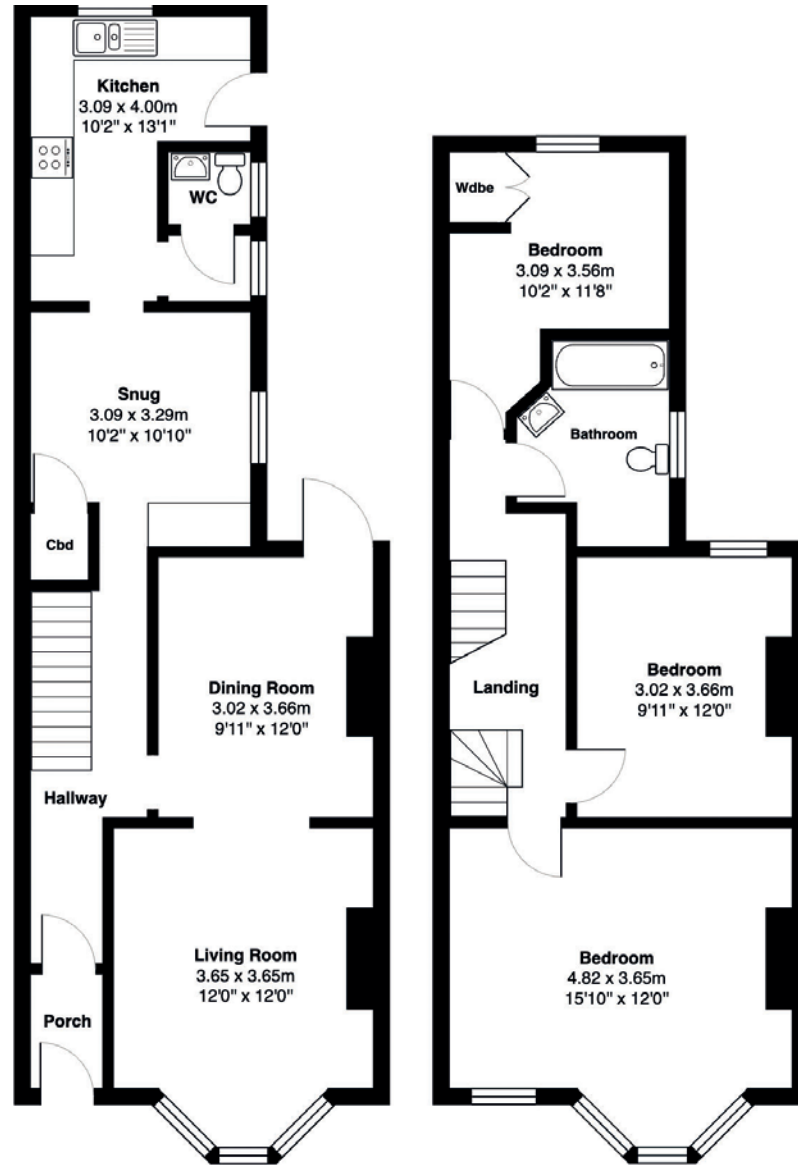
JAMES FARRAN

HIVE Partner for Dorchester/Weymouth

This lovely four bedroom home is bright and spacious, featuring high ceilings and bay windows. Located half a mile from Sandsfoot Beach, a popular destination for paddleboarders due to the calm waters around Portland Harbour. There's also easy access to coastal walks with breathtaking views. Weymouth Beach and town centre with its shops, restaurants, cafés and theatre is only two miles away.



Scan the QR code for my latest property listings and social channels.



Total Area: 136.8 m² ... 1473 ft²

All measurements are approximate and for display purposes only







HIVE & Partners, Dorchester & Weymouth c/o The Hive, Wilson House, 2 Lorne Park Road, Bournemouth BH1 1JN
01305 571 757 | www.hiveandpartners.co.uk