



32 LARCH WOOD AVENUE

WIMBORNE, BH21 2GE

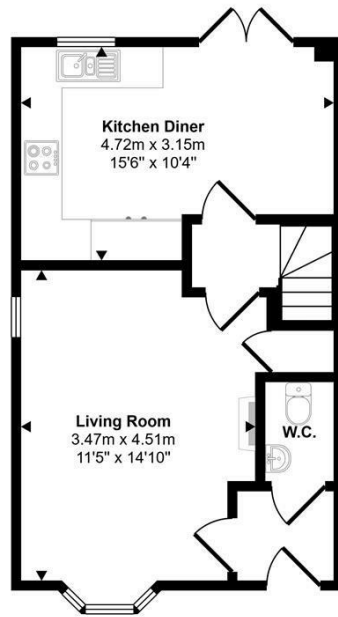
£450,000
FREEHOLD

An immaculately presented three-storey semi-detached home built in 2023 by David Wilson Homes, offering three double bedrooms and a landscaped rear garden. Situated within the popular Quarter Jack Park development on the edge of Wimborne Minster.

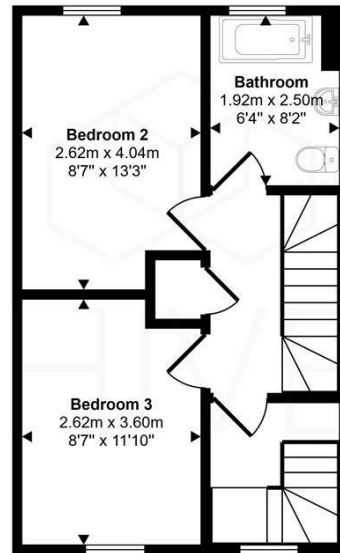


HIVE

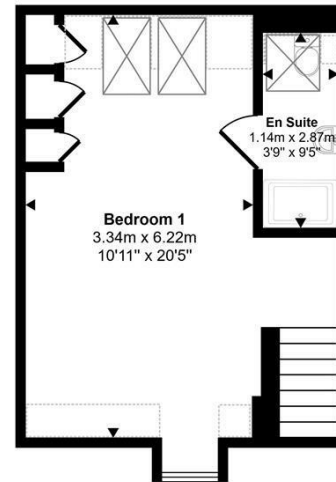
Approx Gross Internal Area
103 sq m / 1106 sq ft




Ground Floor
Approx 37 sq m / 397 sq ft



First Floor
Approx 37 sq m / 396 sq ft



Second Floor
Approx 29 sq m / 313 sq ft

 Denotes head height below 1.5m

This floorplan is only for illustrative purposes and is not to scale. Measurements of rooms, doors, windows, and any items are approximate and no responsibility is taken for any error, omission or mis-statement. Icons of items such as bathroom suites are representations only and may not look like the real items. Made with Made Snappy 360.



Energy Efficiency Rating		
	Current	Potential
Very energy efficient - lower running costs		
(92 plus) A		95
(81-91) B	85	
(69-80) C		
(55-68) D		
(39-54) E		
(21-38) F		
(1-20) G		
Not energy efficient - higher running costs		
England & Wales	EU Directive 2002/91/EC	

Agents Note: Whilst every care has been taken to prepare these particulars, they are for guidance purposes only. All measurements are approximate and are for general guidance purposes only and whilst every care has been taken to ensure their accuracy, they should not be relied upon and potential buyers/tenants are advised to recheck the measurements

Hive & Partners
Unit F1
Arena Business Centre 9
Nimrod Way
Ferndown
BH21 7UH

01202 122 002
sales@hiveandpartners.co.uk
<https://www.hiveandpartners.co.uk/>



HIVE