



19 NORTH STREET
WAREHAM, BH20 7LA

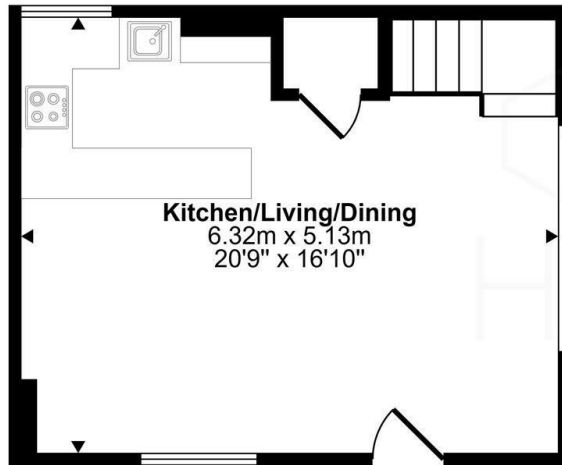
£250,000
FREEHOLD

A beautifully presented two-bedroom period semi-detached cottage with stunning character features, an open-plan ground floor layout and on-street parking, set in the heart of this historic Dorset village.

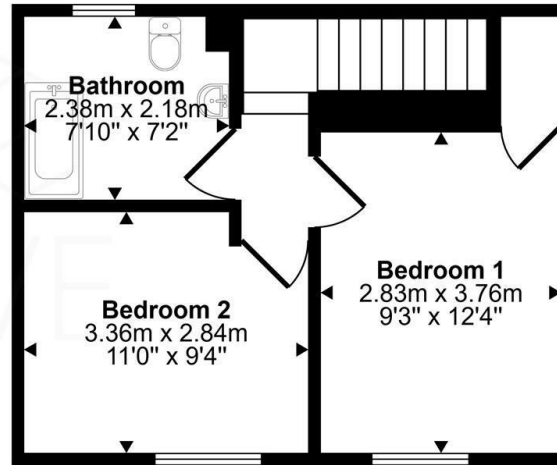


HIVE

Approx Gross Internal Area
65 sq m / 700 sq ft



Ground Floor
Approx 32 sq m / 349 sq ft



First Floor
Approx 33 sq m / 351 sq ft

This floorplan is only for illustrative purposes and is not to scale. Measurements of rooms, doors, windows, and any items are approximate and no responsibility is taken for any error, omission or mis-statement. Icons of items such as bathroom suites are representations only and may not look like the real items. Made with Made Snappy 360.



Energy Efficiency Rating		
	Current	Potential
Very energy efficient - lower running costs		
(92 plus) A		
(81-91) B		
(69-80) C		
(55-68) D		
(39-54) E		
(21-38) F		
(1-20) G		
Not energy efficient - higher running costs		
England & Wales	EU Directive 2002/91/EC	

Agents Note: Whilst every care has been taken to prepare these particulars, they are for guidance purposes only. All measurements are approximate and are for general guidance purposes only and whilst every care has been taken to ensure their accuracy, they should not be relied upon and potential buyers/tenants are advised to recheck the measurements

Hive & Partners
Unit F1
Arena Business Centre 9
Nimrod Way
Ferndown
BH21 7UH

01202 122 002
sales@hiveandpartners.co.uk
<https://www.hiveandpartners.co.uk/>



HIVE