



HIVE

1 Castle Green, Winterborne
Whitechurch, DT11 0AL

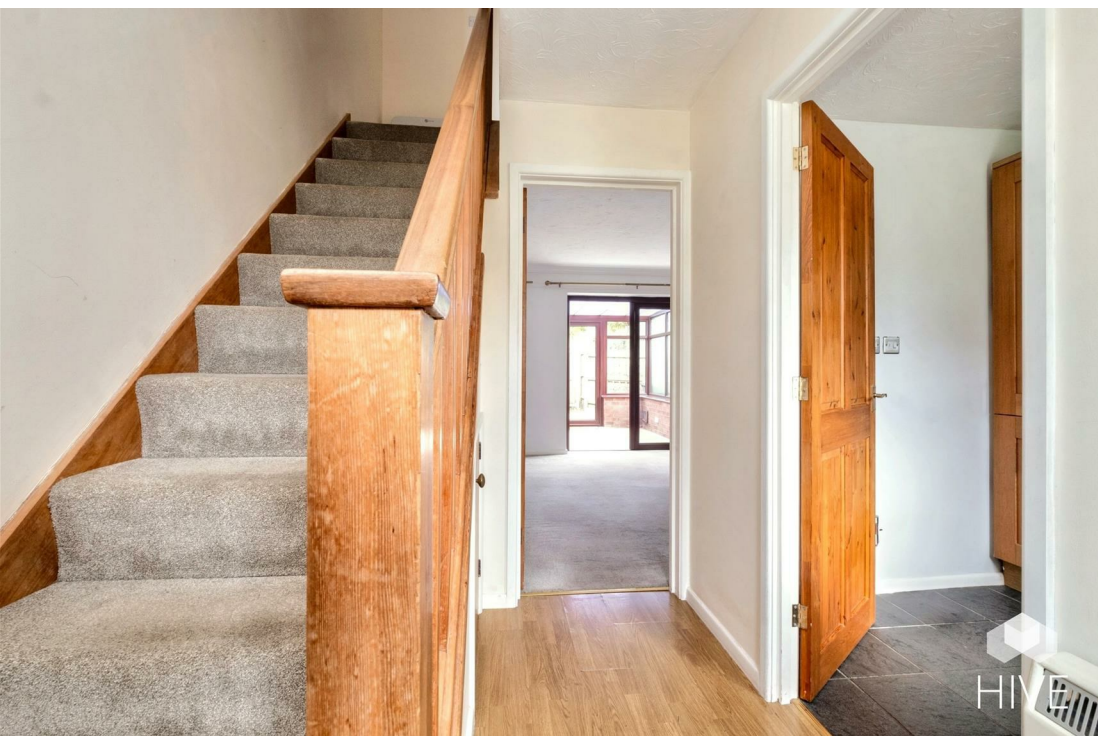


HIVE

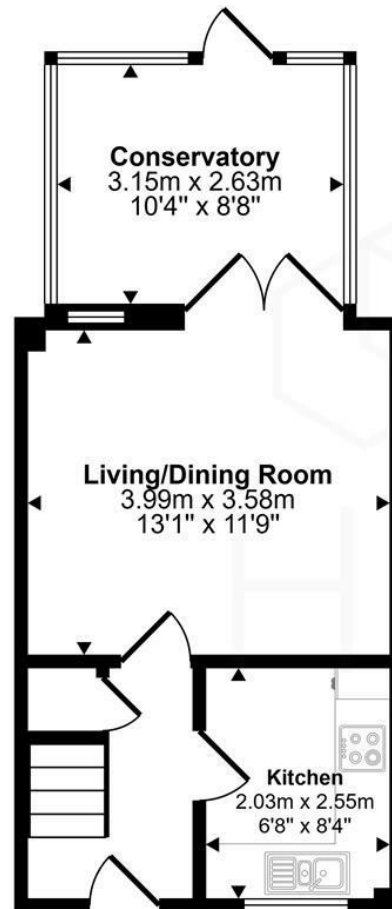


HIVE

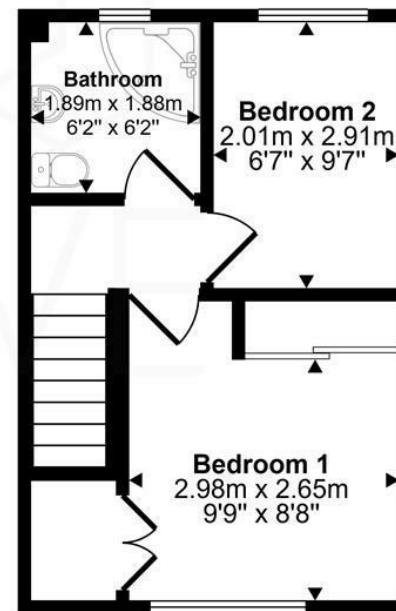




Approx Gross Internal Area
60 sq m / 647 sq ft



Ground Floor
Approx 34 sq m / 369 sq ft

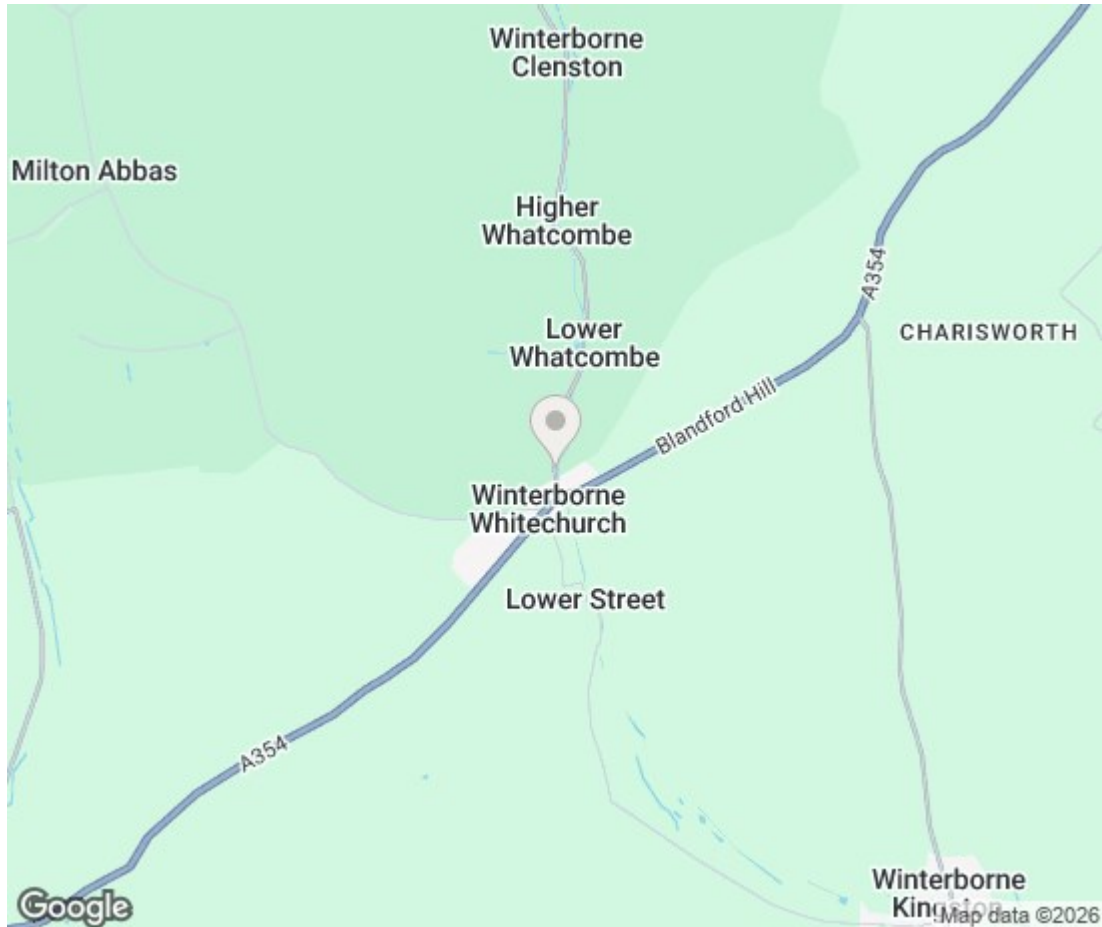
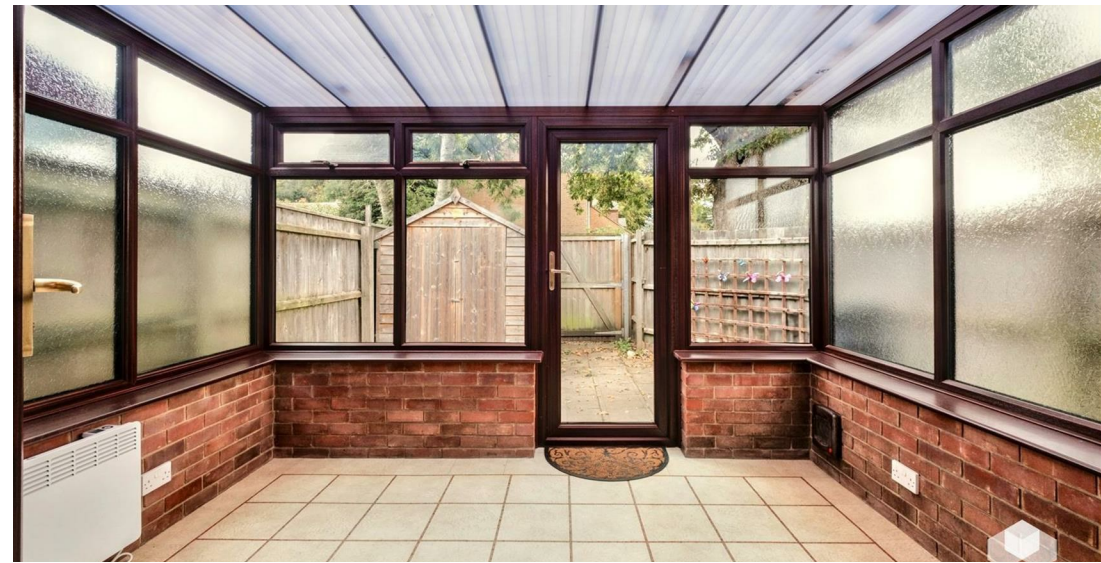


First Floor
Approx 26 sq m / 278 sq ft

This floorplan is only for illustrative purposes and is not to scale. Measurements of rooms, doors, windows, and any items are approximate and no responsibility is taken for any error, omission or mis-statement. Icons of items such as bathroom suites are representations only and may not look like the real items. Made with Made Snappy 360.

1 Castle Green, Winterborne
Whitechurch, DT11 0AL

acre(s)



and Partners

nced team of estate agents, industry leading marketing
hat extends throughout Dorset and Hampshire, our estate
s to deliver exceptional results for our clients.

I 4 Main Property Portals: Rightmove, Zoopla, On the
rime Location

emium Listing on Rightmove

erty listing on Rightmove

Photography

rtual Tours

Marketing Videos with an agent introduction and walk

videography and imagery

Campaigns

Team of estate agents and head office

ention from your own Dedicated Agent from start to finish

re accompanied with a detailed knowledge of your home

ommunication and regular Feedback

Sales Progression

a wide Network that extends throughout Dorset and

uge Database of potential buyers: Local, London and out

OUR 5 STAR GOOGLE REVIEWS

These are just a few of our reviews, Google us or visit our website to see



First class service from Colin. Nothing was too much trouble and he followed everything through from the first enquiries to the successful completion. He was always on hand and very quick to respond. I felt that I mattered which has not always been my experience with other agents.



I cannot recommend Hive enough. My flat had been several months with an agent but not managed to sell despite viewings. Within a week of market with Hive it was sold. His experience, professionalism and I am



My local HIVE agent was always available at the end of the phone and kept me regularly updated throughout the sale. The initial feedback from viewings was received immediately and he even gave guidance to inform our onward purchase. The best in the area!



Brilliant support & communication throughout a difficult sale/purchase but I would highly recommend them as a solid and friendly estate



Hive took on our property after we had a very disappointing experience with another agent. They came in to take some great photos and drone footage of the property and got straight to work. We had several viewings which led to the sale. They kept in contact and provided weekly updates on the number of hits the house was getting. If you're thinking of selling give Hive a chance.



Nick Beavan recently called for a valuation for our family home. He was incredibly brilliant. He was incredibly professional and took the time to explain the valuation. He answered all of our questions and showed us the professionalism. We felt in his expertise throughout the process. A great agent - highly recommended.



HIVE went above and beyond to capture fantastic photos using aerial staging to show the home's full potential. The result was a beautifully presented listing that really stood out and ultimately led to a successful sale.



Paul & the HIVE team, thank you for helping us finally get our house sold. After months of waiting, you came in like a breath of fresh air. Fabulous service, words cannot describe the property and we had it sold in 4 days! What more could we ask for? Would highly recommend.



Hive & Partners

Unit F1, Arena Business Centre 9 Nimrod Way, Ferndown, BH21 7UH
01202 122 002 | sales@hiveandpartners.co.uk