



## 1 SPRINGFIELD MEWS

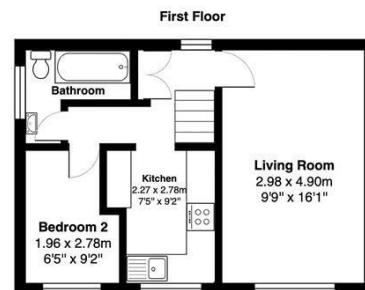
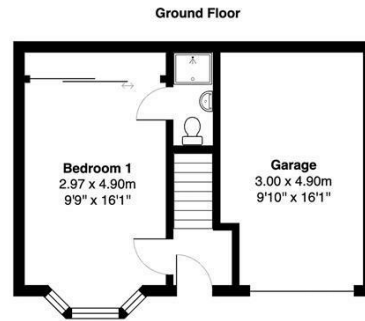
SWANAGE, BH19 1JR

£325,000  
FREEHOLD

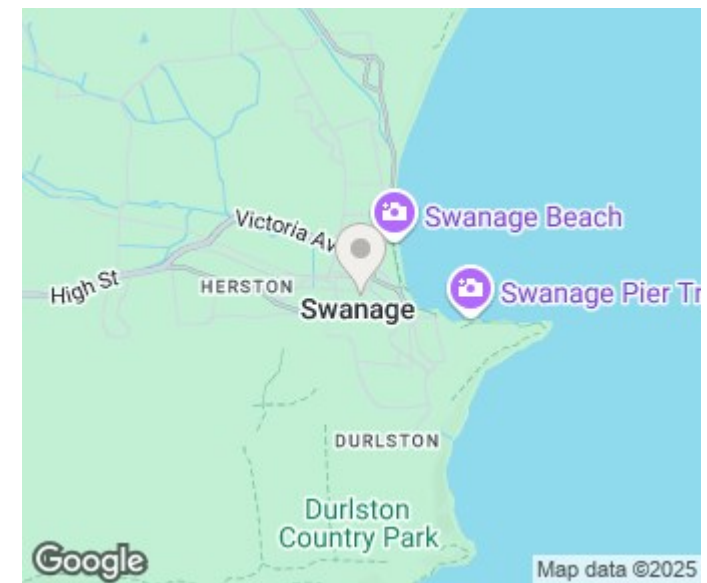
\*\* 2 bedroom house centrally located \* \* Allocated parking \* \* Low maintenance garden \* \* Approx. 250 metres level walk to town and beach \* \* Link detached \* \* Single garage \* \* Ideal investment / first time home \* \* Must be viewed \*\*




HIVE



Total Area: 70.4 m<sup>2</sup> ... 758 ft<sup>2</sup>  
All measurements are approximate and for display purposes only



Energy Efficiency Rating		
	Current	Potential
Very energy efficient - lower running costs		
(92 plus) <b>A</b>		<b>86</b>
(81-91) <b>B</b>		
(69-80) <b>C</b>		
(55-68) <b>D</b>	<b>63</b>	
(39-54) <b>E</b>		
(21-38) <b>F</b>		
(1-20) <b>G</b>		
Not energy efficient - higher running costs		
<b>England &amp; Wales</b>		
EU Directive 2002/91/EC		
		

Agents Note: Whilst every care has been taken to prepare these particulars, they are for guidance purposes only. All measurements are approximate and are for general guidance purposes only and whilst every care has been taken to ensure their accuracy, they should not be relied upon and potential buyers/tenants are advised to recheck the measurements

Hive & Partners  
Unit F1  
Arena Business Centre 9  
Nimrod Way  
Ferndown  
BH21 7UH

01202 122 002  
sales@hiveandpartners.co.uk  
<https://www.hiveandpartners.co.uk/>



**HIVE**