



HIVE

COPPICE HOUSE
74 WOOLSBIDGE ROAD
ASHLEY HEATH
BH24 2LX



presented by
NICK BEAVAN
Partner for Ringwood
01425 546 468



Agent's introduction

Coppice House is a stunning, architect-designed detached new home, in the sought after area of Ashley Heath. Designed in partnership with one of the South's leading developers, every detail has been considered, from the clean lines to the luxurious finishes that define each room.







Property highlights

Private secluded plot in a desirable location

Four good size bedrooms, two with en-suite

Luxury fitted kitchen

High specification finishes throughout

Large entrance hallway

Underfloor heating

Utility room with access to a single garage

Electric charging point and ample parking





NICK BEAVAN

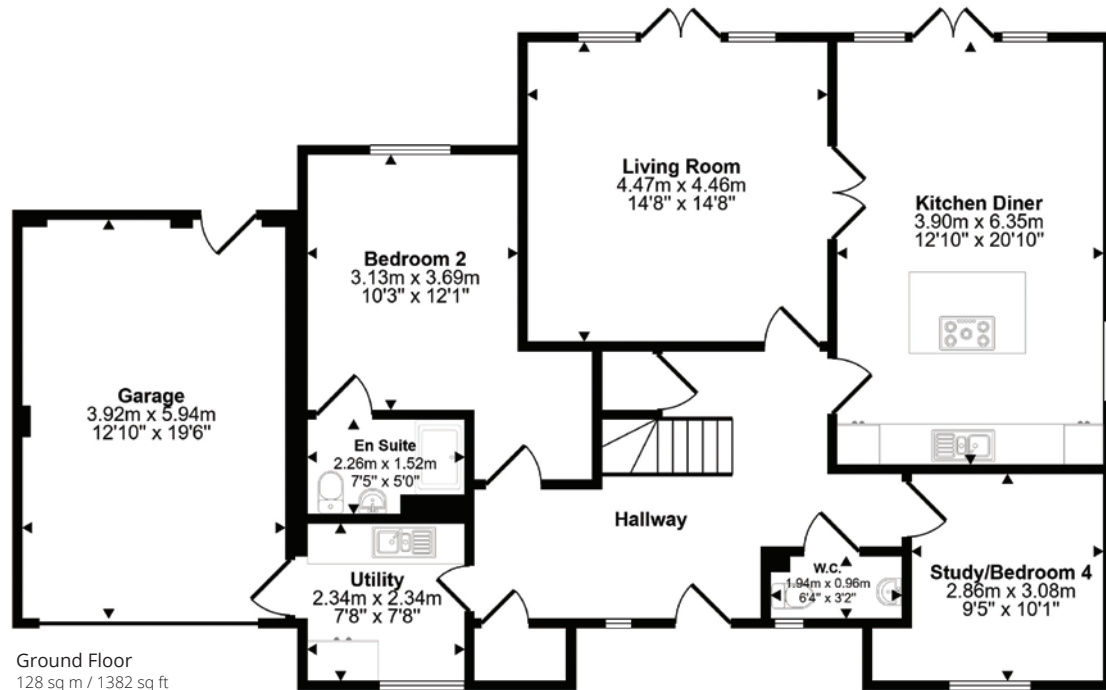
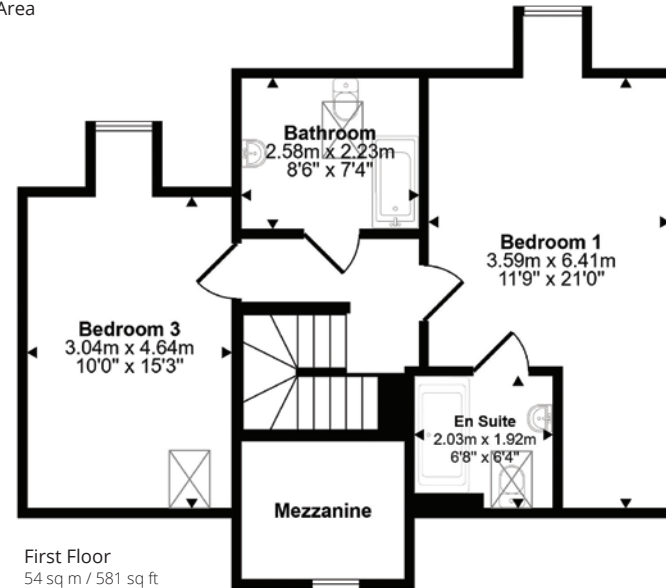
Partner for Ringwood/Fordingbridge

Set within a generous 0.45 acre plot, this brand new home provides approximately 1963 sq. ft. of beautifully appointed living space. The property is located within easy reach of St Ives First School and just three miles from the charming market town of Ringwood. Both Avon Heath and Moors Valley country parks are a ten minute walk away.



Scan the QR code for my latest property listings and social channels.

Approx Gross Internal Area
182 sq m / 1963 sq ft



This floorplan is only for illustrative purposes and is not to scale. Measurements of rooms, doors, windows, and any items are approximate and no responsibility is taken for any error, omission or mis-statement. Icons of items such as bathroom suites are representations only and may not look like the real items. Made with Made Snappy 360.





HIVE & Partners, Ringwood/Fordingbridge c/o The Hive, Unit 1 Arena Business Centre, 9 Nimrod Way, Ferndown BH21 7UH
01425 546 468 | www.hiveandpartners.co.uk