



HIVE

LONG MEADOWS
VALLEY ROAD
CORFE CASTLE
WAREHAM
BH20 5HU



presented by
COLIN CATTERMOLLE
HIVE Partner for Wareham
01929 408 419



Agent's introduction

This immaculately presented three bedroom home features a vaulted ceiling in the large open-plan living space, and a fantastic sun room that overlooks the rear gardens. The property comes with a detached two bedroom lodge, providing guest accommodation and/or the potential for an Airbnb. The property is set on a generous 1.5 acre plot with stunning countryside views. Located two miles from Corfe Castle and four miles from Swanage town centre and beachfront.







Property highlights

Large plot with breathtaking views

Vaulted ceiling in living area with oak flooring throughout

Modern kitchen with sleek granite worktops

Cosy log burning stove and underfloor heating

Outdoor dining area with stone wall enclosure

Large cut roof offering the potential for a conversion (subject to planning permission)

Detached two bedroom lodge

Substantial double garage with storage and power

Ample car parking and an external EV charging point









3 bedrooms

2 bathrooms (including 1 en-suite)

Open plan kitchen/living/dining room, sun room, utility room, and garage

Self contained 2 bedroom, 1 bathroom detached lodge

2,156 sq ft of accommodation (including lodge)

Accommodation overview





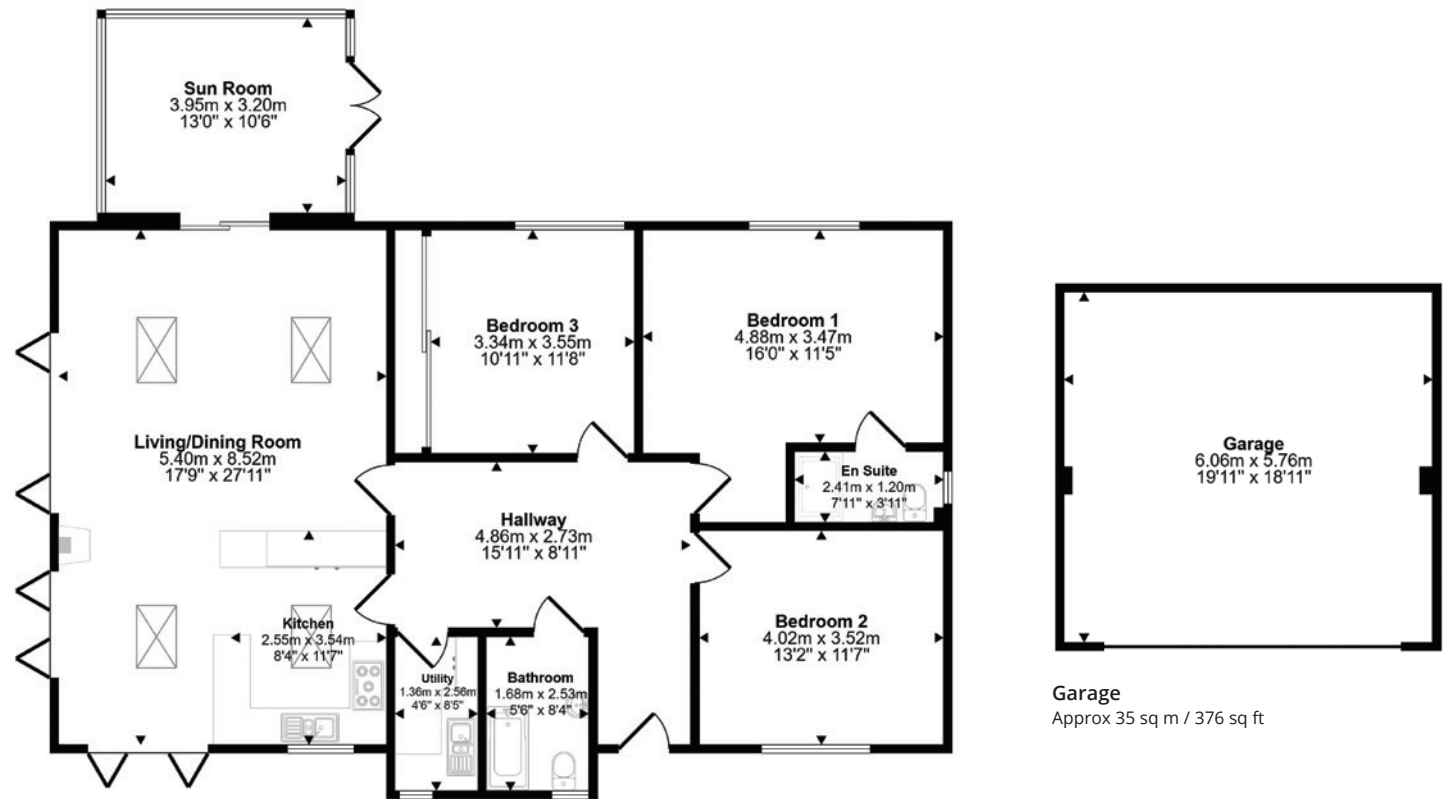


COLIN CATTERMOLLE
HIVE Partner for Swanage/Wareham

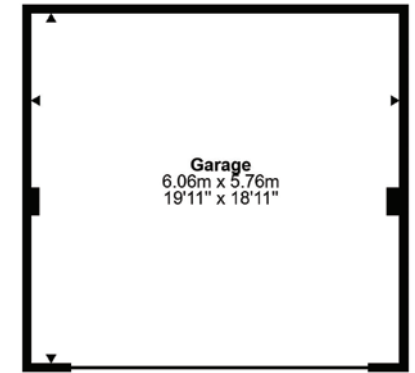
A beautifully designed home in a wonderful spot with panoramic views towards Corfe Castle and the Purbeck Hills. The wooden clad lodge, features two bedrooms, a spiral staircase, a kitchen, a WC and shower. The sandy beaches of Swanage, Corfe Castle and the famous Jurassic Coastal Path are all within easy reach.



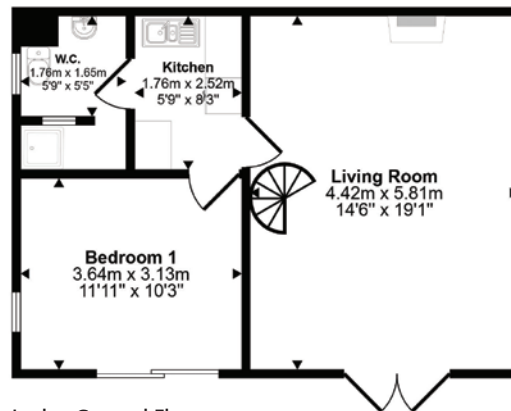
Scan the QR code for my latest property listings and social channels.



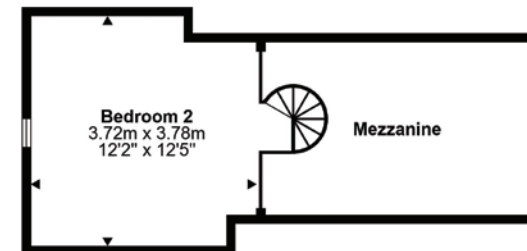
Floorplan
Approx 139 sq m / 1498 sq ft



Garage
Approx 35 sq m / 376 sq ft



Lodge Ground Floor
Approx 48 sq m / 515 sq ft



Lodge First Floor
Approx 13 sq m / 143 sq ft

This floorplan is only for illustrative purposes and is not to scale. Measurements of rooms, doors, windows, and any items are approximate and no responsibility is taken for any error, omission or mis-statement. Icons of items such as bathroom suites are representations only and may not look like the real items. Made with Made Snappy 360.





HIVE & Partners, Swanage and Wareham c/o The Hive, Wilson House, 2 Lorne Park Road, Bournemouth BH1 1JN
01929 408 419 | www.hiveandpartners.co.uk