



HIVE

24 ALBION WAY
VERWOOD
BH31 7LR



presented by
ANJI HAZELL & PAUL DEHON
01202 122 252



Agent's introduction

This exceptionally spacious four bedroom detached home is situated in a quiet cul-de-sac on the edge of Ringwood Forest, just a short walk from Verwood village centre. The property has a bright living room, large kitchen/ breakfast room and a recently added family room. The principal bedroom is generous in size with a bay window, fitted wardrobes and modern en-suite shower room.







Property highlights

Stunning open plan kitchen/diner

Newly added living space with vaulted ceiling and patio doors to the garden

Utility room

Spacious lounge

Four bedrooms

En-suite shower room and family bathroom

Downstairs cloakroom

Driveway with parking for two vehicles

Detached single garage

Large garden with decking and pergola to the rear





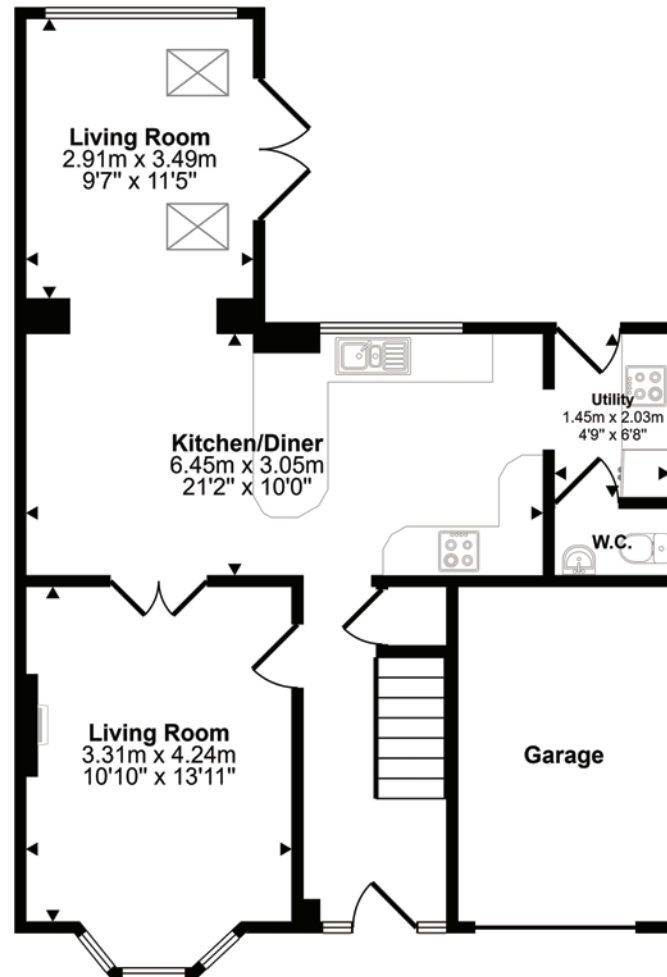
ANJI HAZELL
HIVE Partner for Verwood/Ferndown

This lovely property is situated on a popular development, a short walk to the village centre and close to Dewlands Common, perfect for walking and bike riding. The charming market town of Ringwood is approximately six miles away and Bournemouth with its shops, restaurants and Blue Flag sandy beaches is within easy reach.

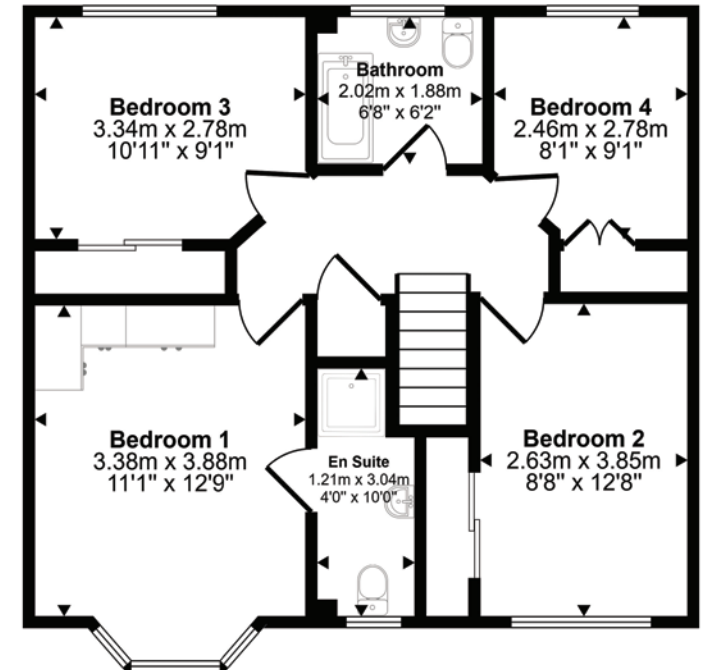


Scan the QR code for my latest property listings and social channels.

Approx Gross Internal Area
134 sq m / 1438 sq ft



Ground Floor
Approx 72 sq m / 773 sq ft



First Floor
Approx 62 sq m / 665 sq ft

This floorplan is only for illustrative purposes and is not to scale. Measurements of rooms, doors, windows, and any items are approximate and no responsibility is taken for any error, omission or mis-statement. Icons of items such as bathroom suites are representations only and may not look like the real items. Made with Made Snappy 360.





HIVE & Partners, Verwood, Ferndown, West Parley & Wimborne c/o The Hive, Wilson House, 2 Lorne Park Road, Bournemouth BH1 1JN
01202 122 252 | www.hiveandpartners.co.uk