



## 7 THE AVENUE

POOLE, BH13 6AE

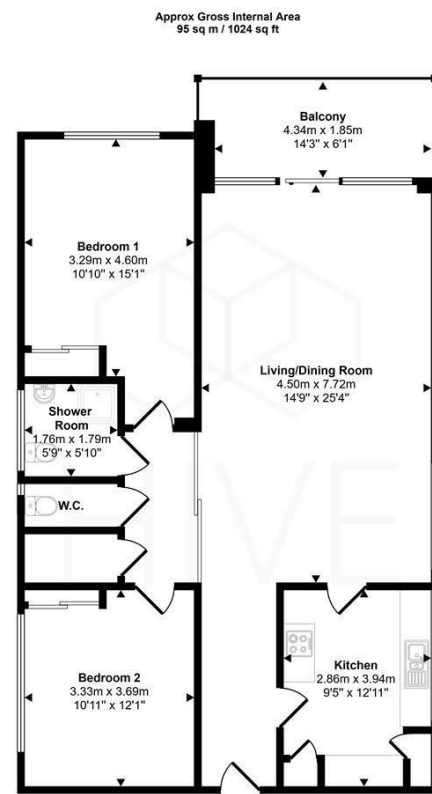
£325,000  
LEASEHOLD - SHARE OF FREEHOLD

- \* Well presented fourth floor apartment \* \* Enviale location just 0.3 mile level walk from Westbourne Village
- \* \* Just 1 mile from the beach \* \* Two double bedrooms \* \* Modern shower room \* \* Additional cloakroom \*
- \* Large living/dining room \* \* Modern kitchen \* \* Balcony \* \* Garage \* \* No chain \*



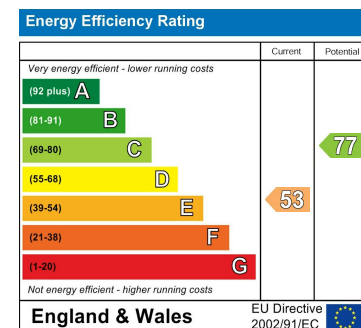
HIVE





Floorplan

This floorplan is only for illustrative purposes and is not to scale. Measurements of rooms, doors, windows, and any items are approximate and no responsibility is taken for any error, omission or mis-statement. Icons of items such as bathroom suites are representations only and may not look like the real items. Made with Made Snappy 360.



Agents Note: Whilst every care has been taken to prepare these particulars, they are for guidance purposes only. All measurements are approximate and are for general guidance purposes only and whilst every care has been taken to ensure their accuracy, they should not be relied upon and potential buyers/tenants are advised to recheck the measurements

Hive & Partners  
Unit F1  
Arena Business Centre 9  
Nimrod Way  
Ferndown  
BH21 7UH

01202 122 002  
sales@hiveandpartners.co.uk  
<https://www.hiveandpartners.co.uk/>



HIVE