



HIVE

1 MAPLE GARDENS
VERWOOD
BH31 6AG



presented by
ANJI HAZELL
HIVE Partner for Verwood
01202 122 252



Agent's introduction

A charming four bedroom cottage style property, on an exclusive development of just five detached houses. With a wonderful large kitchen/dining room and four good sized bedrooms, this home provides spacious and flexible accommodation.







Property highlights

Large modern kitchen with NEFF integrated appliances

Underfloor heating

Patio doors to the garden from the living room and kitchen/dining room

Two luxurious en-suites and a family bathroom

Downstairs cloakroom

Low maintenance garden

Double garage

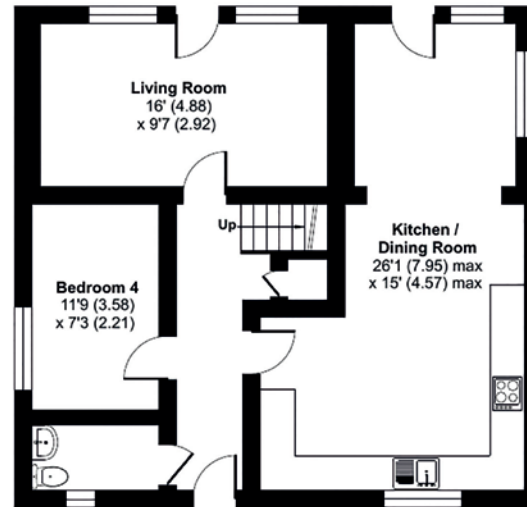
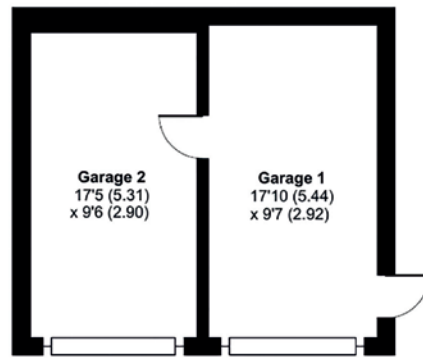
Four years of the new build guarantee remaining



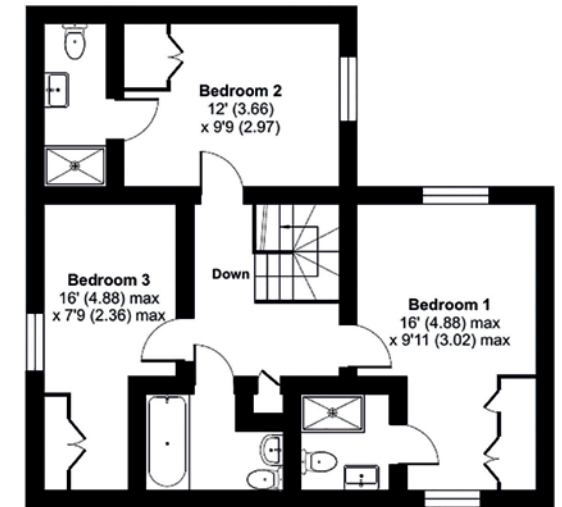


ANJI HAZELL
HIVE Partner for Verwood

This lovely detached home is within walking distance of Ringwood Forest. Woodland walks, village shops and schools are all close by. The charming market towns of Ringwood and Wimborne are both just a short drive away. Bournemouth, with its Blue Flag award winning beaches, is also within easy reach.



GROUND FLOOR



FIRST FLOOR

Maple Gardens, Verwood, BH31

Approximate Area = 1375 sq ft / 127.7 sq m

Garage = 352 sq ft / 32.7 sq m

Total = 1727 sq ft / 160.4 sq m

For identification only - Not to scale



Scan the QR code for my latest property listings and social channels.





HIVE & Partners, Verwood c/o The Hive, Wilson House, 2 Lorne Park Road, Bournemouth BH1 1JN
01202 122 252 | www.hiveandpartners.co.uk