



HIVE

13 TABITHA CLOSE
HAMWORTHY
BH15 4FT



presented by
MATTHEW WILSON
HIVE Partner for Poole/Broadstone
01202 122 002



Agent's introduction

This three bedroom home is situated in a quiet cul-de-sac within one of my favourite developments. Built in 2020 by the well-renowned Barratt Homes, this lovely house is well-presented throughout.

Seller's introduction

Hamworthy beach is amazing for our dog walks and Poole Quay is nearby as well, which is great for a drink on a nice summers evening. There are regular events on the estate too, where everyone comes together for BBQs, so it's really friendly.







Property highlights

Large modern kitchen/dining room

Separate living room

Family bathroom, en-suite and
downstairs cloakroom

Large rear garden

Driveway parking

Quiet cul-de-sac

Over 5 years' new build
warranty remaining

Close to Hamworthy Park and
local sandy beaches





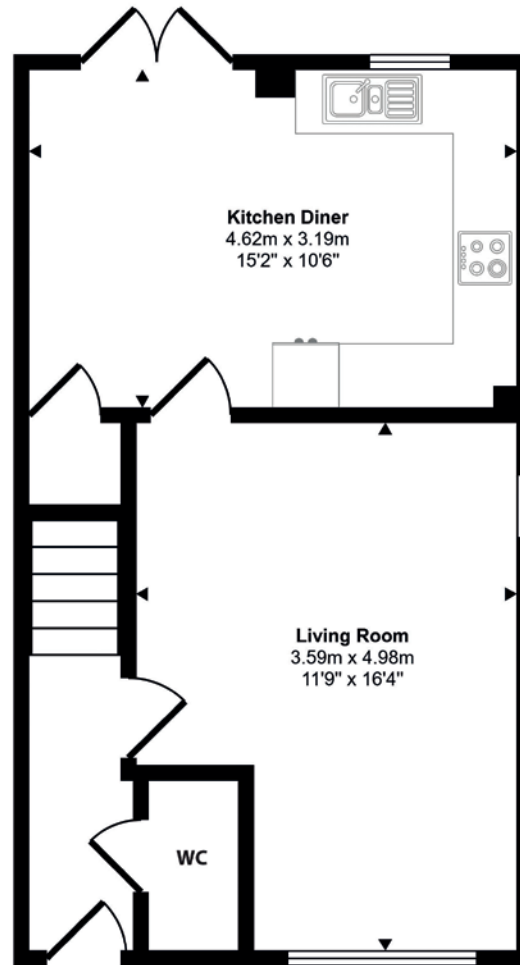
MATTHEW WILSON
HIVE Partner for Poole/Broadstone

This beautifully presented three bedroom semi-detached home is situated in a sought after development near Hamworthy Park. Poole town centre with its shops, restaurants, cafés, bars, theatre and picturesque Quay is just over two miles away.

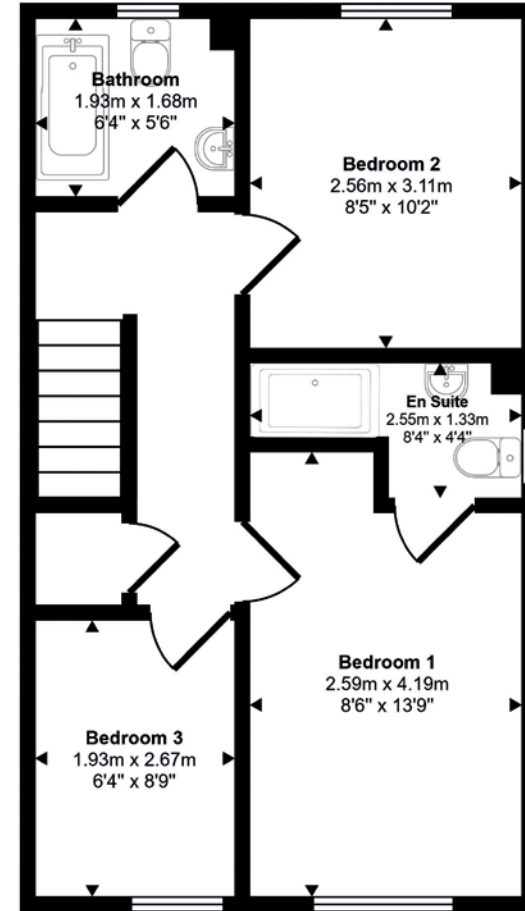


Scan the QR code for my latest property listings and social channels.

Approx Gross Internal Area
77 sq m / 832 sq ft



Ground Floor
Approx 38 sq m / 413 sq ft



First Floor
Approx 39 sq m / 419 sq ft

This floorplan is only for illustrative purposes and is not to scale. Measurements of rooms, doors, windows, and any items are approximate and no responsibility is taken for any error, omission or mis-statement. Icons of items such as bathroom suites are representations only and may not look like the real items. Made with Made Snappy 360.





HIVE & Partners, Poole, Broadstone & Corfe Mullen c/o The Hive, Wilson House, 2 Lorne Park Road, Bournemouth BH1 1JN

01202 122 002 | www.hiveandpartners.co.uk