



HIVE

8 STANLEY CLOSE
VERWOOD
BH31 6EU



presented by
ANJI HAZELL
HIVE Partner for Verwood
01202 122 252



Agent's introduction

This incredible four bedroom chalet bungalow was nominated in 2021 for the Best Self Build Awards. An energy efficient property offering spacious, flexible living accommodation. There is a stunning open plan kitchen/dining/living area with patio doors to the garden, four good sized bedrooms, a garage and off road parking.







Property highlights

Large modern kitchen/dining room
with integrated appliances

Underfloor heating

Solar panels and Air Source Heat Pump

Spacious and bright living room

En-suite to the principal bedroom

Ground floor bedroom and
shower room

Garden room/bar

Garage and off road parking





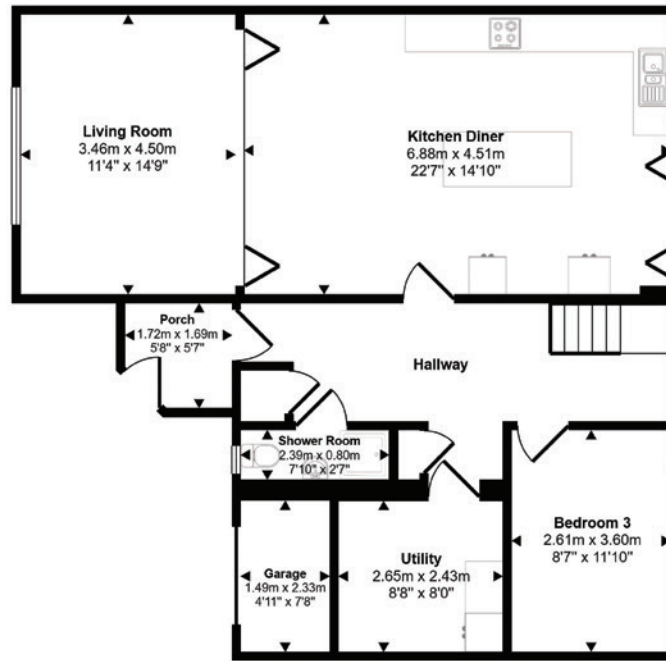
ANJI HAZELL
HIVE Partner for Verwood

This lovely detached home is beautifully presented and would be adaptable for multi-generational living. The property is within walking distance of Ringwood Forest with its peaceful woodland walks. The village centre is only a short walk away too, with its local shops, amenities and schools. The charming market town of Ringwood is only a five miles distant.



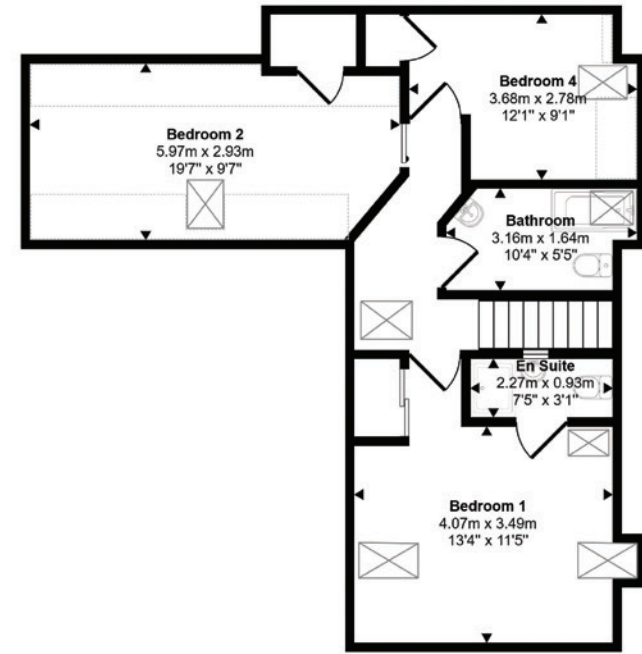
Scan the QR code for my latest property listings and social channels.

Approx Gross Internal Area
159 sq m / 1707 sq ft

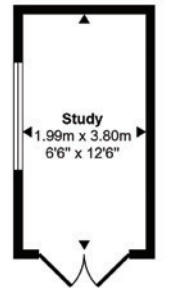


Ground Floor
Approx 91 sq m / 981 sq ft

Denotes head height below 1.5m



First Floor
Approx 60 sq m / 645 sq ft



Study
Approx 8 sq m / 81 sq ft

This floorplan is only for illustrative purposes and is not to scale. Measurements of rooms, doors, windows, and any items are approximate and no responsibility is taken for any error, omission or mis-statement. Icons of items such as bathroom suites are representations only and may not look like the real items. Made with Made Snappy 360.





HIVE & Partners, Verwood c/o The Hive, Wilson House, 2 Lorne Park Road, Bournemouth BH1 1JN
01202 122 252 | www.hiveandpartners.co.uk