



HIVE

THE CUCKOO'S NEST
25 HILLVIEW ROAD
SWANAGE
BH19 2QU



presented by
COLIN CATTERMOLE
HIVE Partner for Swanage
01929 408 419



Agent's introduction

This beautifully presented three bedroom chalet-style home features a luxurious top floor principal bedroom with a stylish en-suite, a spacious living room, and a modern kitchen/dining room. A low maintenance garden with sheltered patio, plus a detached garage and off-road parking, adds to its appeal.







Property highlights

Large living room with patio doors to the rear garden

Contemporary kitchen/breakfast room with integrated appliances

Separate utility room

Spacious top floor principal bedroom with en-suite

Low maintenance garden

Detached garage

Ample off-road parking



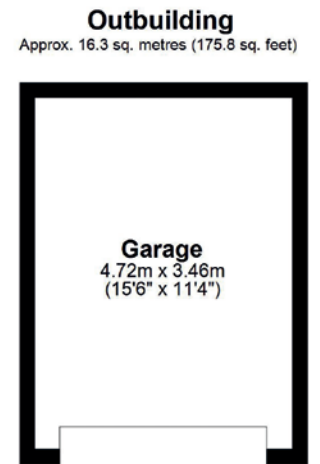
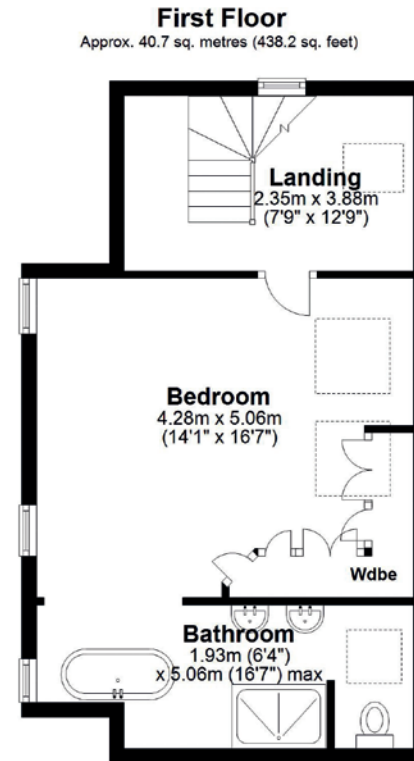
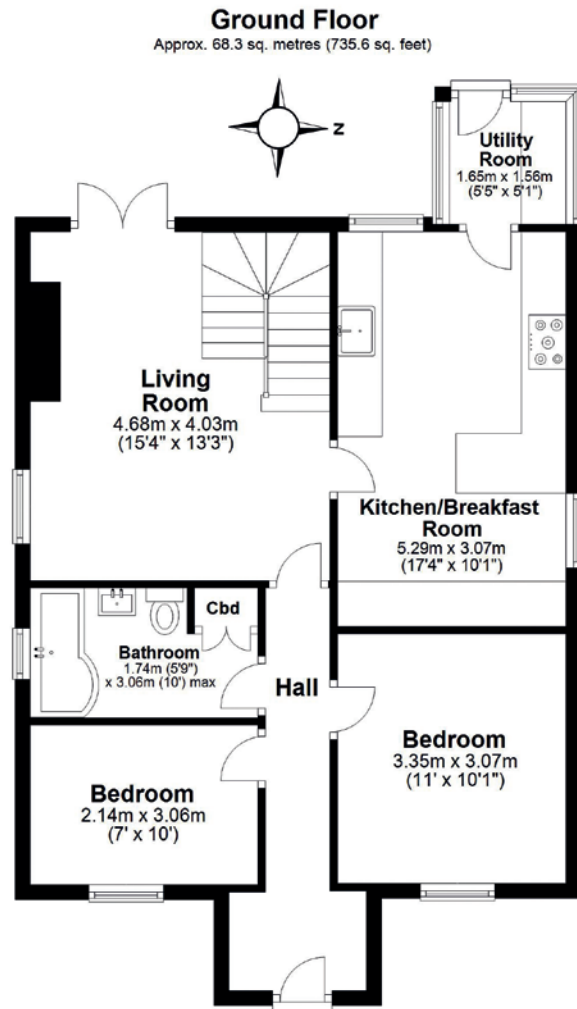


COLIN CATTERMOLLE
HIVE Partner for Swanage

The Cuckoo's Nest is a lovely home, that has been well looked after by the current owners. The property is less than two miles from Townsend Nature Reserve, Durlston Castle/Country Park and stunning coastal paths. Swanage town centre is also close by, providing local amenities, shops, restaurants, cafés and beautiful award winning sandy beaches.



Scan the QR code for my latest property listings and social channels.



Total area: approx. 125.4 sq. metres (1349.6 sq. feet)





HIVE & Partners, Swanage c/o The Hive, Wilson House, 2 Lorne Park Road, Bournemouth BH1 1JN
01929 408 419 | www.hiveandpartners.co.uk