



HIVE

218 HIGH STREET
SWANAGE
BH19 2PQ



presented by
COLIN CATTERMOLE
HIVE Partner for Swanage
01929 408 419



Agent's introduction

This delightful 19th century terrace home is situated on the High Street in one of the oldest neighbourhoods in Swanage. Constructed from Purbeck stone with a pebbledash finish, this well presented property combines unique character features with contemporary fittings.







Every
TE
KE
king you

A spoilt
rotten dog
called
RUBY
keeps their
TREATS
here

Property highlights

Built with traditional Purbeck stone

Contemporary kitchen and bathroom

Two good sized double bedrooms

Versatile loft space

Attractive rear garden

One mile from Swanage town
centre and beach



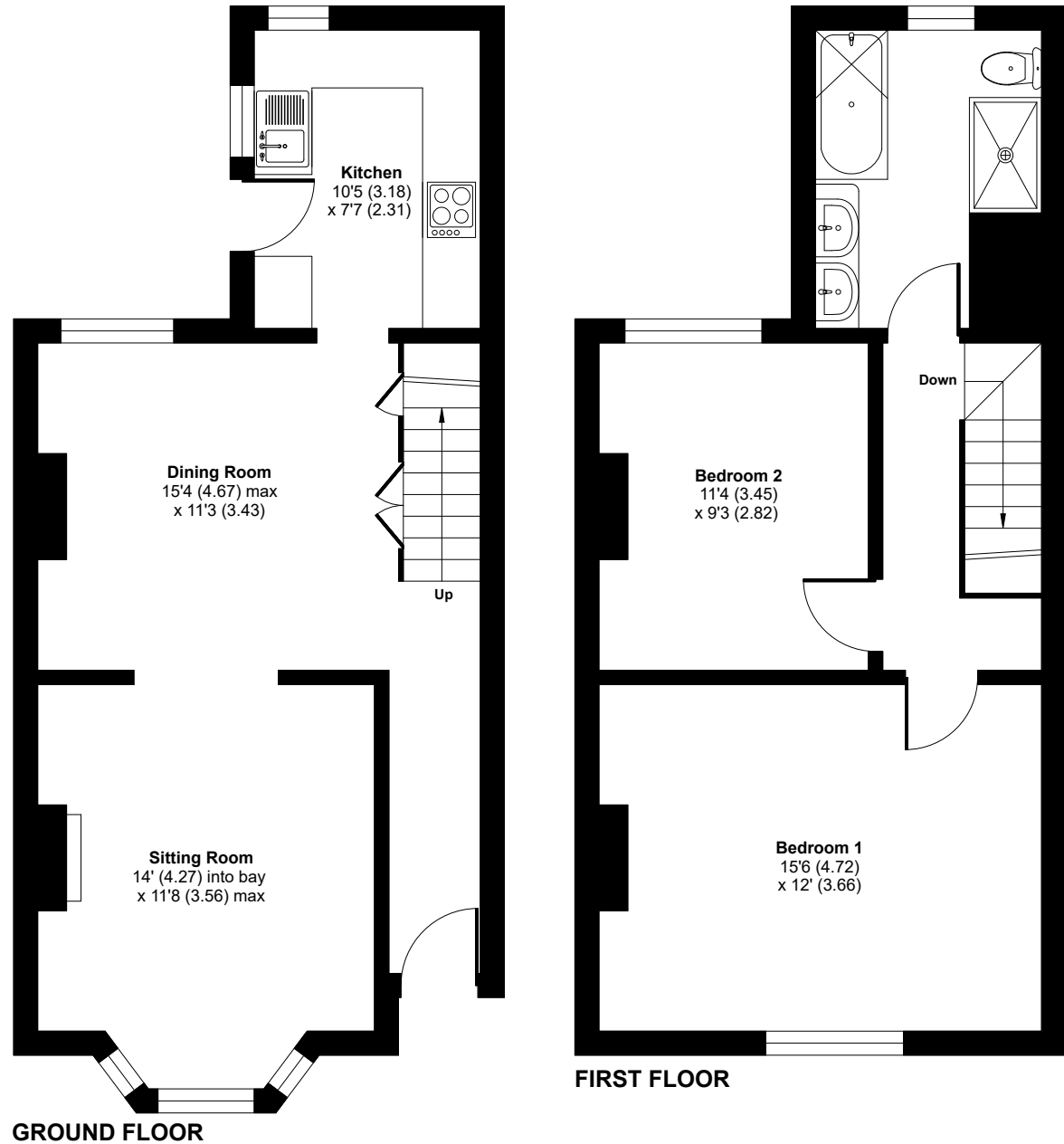


COLIN CATTERMOLLE
HIVE Partner for Swanage

Situated in the popular and sought after coastal location of Swanage, this lovely home provides spacious living areas and two double bedrooms. The town centre is close by, providing local amenities, shops, restaurants, cafés and beautiful award winning sandy beaches.



Scan the QR code for my latest property listings and social channels.



Approximate Area: 904 sq ft / 83.9 sq m





HIVE & Partners, Swanage c/o The Hive, Wilson House, 2 Lorne Park Road, Bournemouth BH1 1JN
01929 408 419 | www.hiveandpartners.co.uk