



HIVE

ROCKLEY COTTAGE
EAST CREECH
CREECH
WAREHAM
BH20 5AP



presented by
COLIN CATTERMOLE
HIVE Partner for Swanage
01929 408 419



Agent's introduction

Rockley Cottage is a charming Grade II listed, mid-17th century property, in the picturesque hamlet of East Creech on the Isle of Purbeck. Blending historical character with modern comforts, this 933 sq ft home features period details such as an inglenook fireplace, exposed beams, and a thatched roof. The property includes a detached timber annexe, private gardens, and scenic views, all set within an Area of Outstanding Natural Beauty.







Property highlights

Grade II listed cottage

Private gravelled driveway with parking for two cars

Detached timber annexe designed by a local architect

Additional lawn area and orchard

Gardens extend to approximately a quarter of an acre

Inglenook fireplace with wood burner and bread oven

Flagstone floor

No forward chain



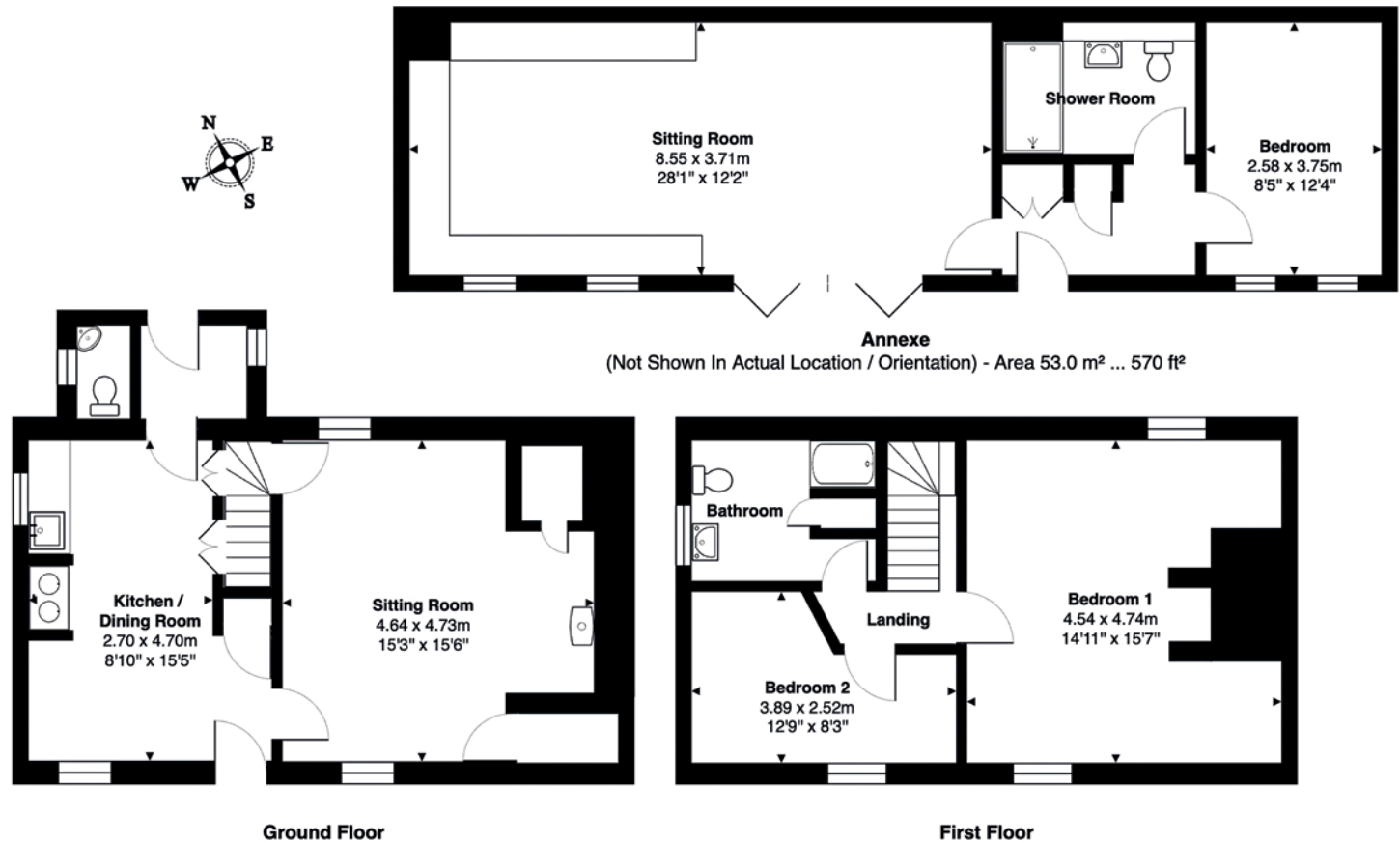


COLIN CATERMOLE
HIVE Partner for Swanage

This unique period home is located approximately 3 miles from both Corfe Castle and Wareham town centre, providing easy access to local amenities and transport links. Rockley Cottage presents a rare opportunity to own a piece of history. With its blend of period charm, modern amenities, and stunning surroundings, this property is an ideal countryside retreat.



Scan the QR code for my latest property listings and social channels.



Total Area: 140.5 m² ... 1512 ft²

All measurements are approximate and for display purposes only





HIVE & Partners, Swanage c/o The Hive, Wilson House, 2 Lorne Park Road, Bournemouth BH1 1JN
01929 408 419 | www.hiveandpartners.co.uk