



HIVE

27 ILCHESTER ROAD
WEYMOUTH
DT4 0AW



presented by
JAMES FARRAN
HIVE Partner for Dorchester/Weymouth
01305 571 757



Agent's introduction

This charming Victorian terraced home is in a highly desirable location, within walking distance to the town and harbour. With a spacious open plan living/dining area, two double bedrooms, and a sun room leading to an enclosed rear garden.

Seller's introduction

The house is in such a great location, we can walk to the town centre or down to the harbour in about 15 minutes. The Rodwell Trail is close too, which is great for a leisurely walk on the weekends.







Property highlights

Victorian period property

Bay windows to the living room
and principal bedroom

Walking distance to the town centre
and harbour

Sun room with lantern roof

Modern kitchen and bathroom

Large open plan living/dining room

Private enclosed garden





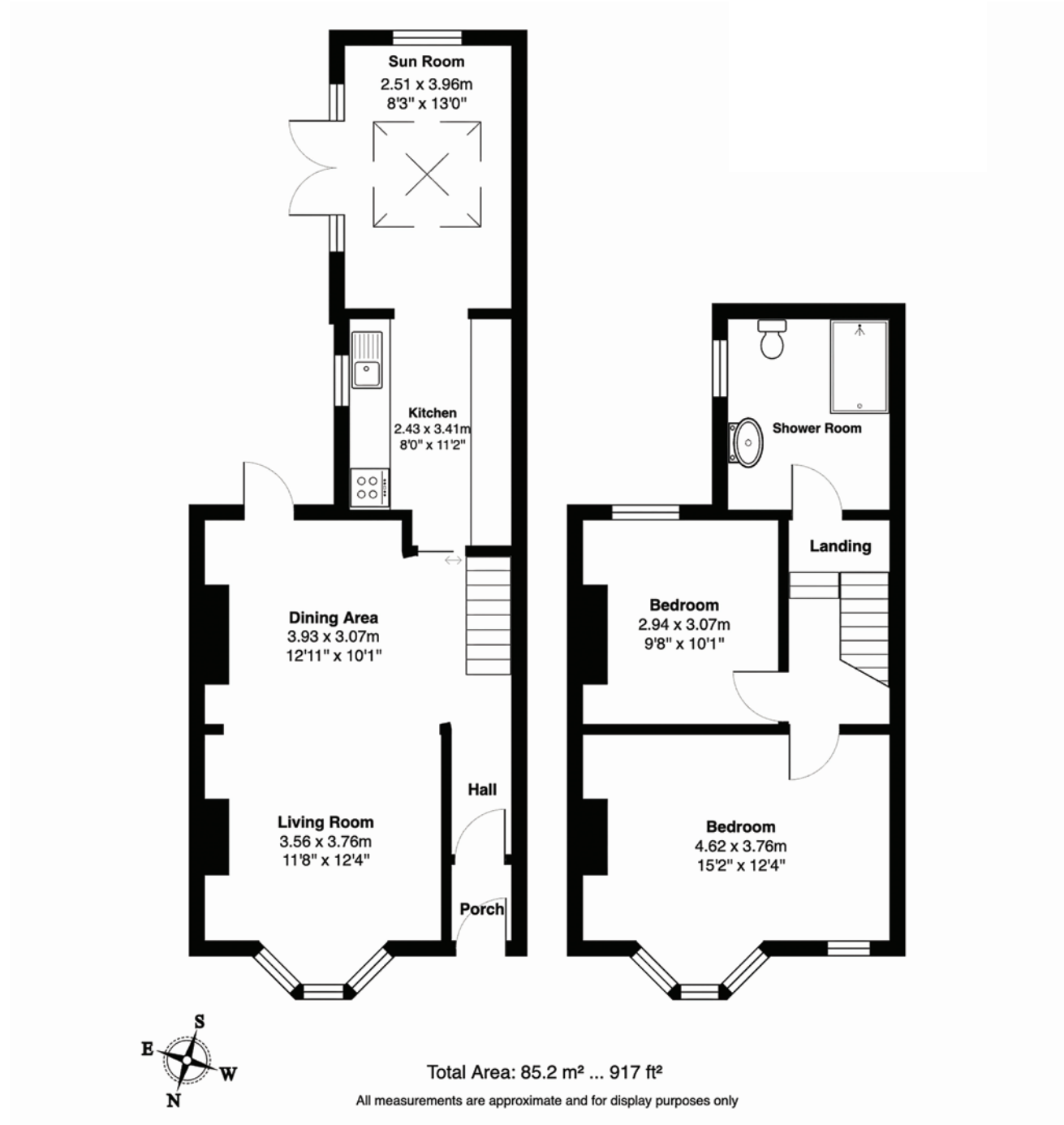
JAMES FARRAN

HIVE Partner for Dorchester/Weymouth

This delightful period home offers the perfect blend of character and modern convenience. The property is situated just a short walk from the Rodwell Trail, leading into Weymouth town centre with its shops, restaurants, bars, sandy beaches and picturesque harbour.



Scan the QR code for my latest property listings and social channels.







HIVE & Partners, Dorchester & Weymouth c/o The Hive, Wilson House, 2 Lorne Park Road, Bournemouth BH1 1JN
01305 571 757 | www.hiveandpartners.co.uk