



HIVE

HEDBURY
EAST DROVE
LANGTON MATRAVERS
SWANAGE
BH19 3HF



presented by
COLIN CATTERMOLE
HIVE Partner for Swanage
01929 408 419



Agent's introduction

This charming four bedroom home is situated on a private road in the desirable Purbeck village of Langton Matravers. Built in the 1930s, this detached property is surrounded by idyllic countryside, with the South West Coast Path and the sandy beaches of Swanage just a short drive away.







Property highlights

Detached property with garage
and ample off road parking

Desirable village location

Log burner

Large south facing garden

En-suite to the principal bedroom

Downstairs cloakroom

Solar power

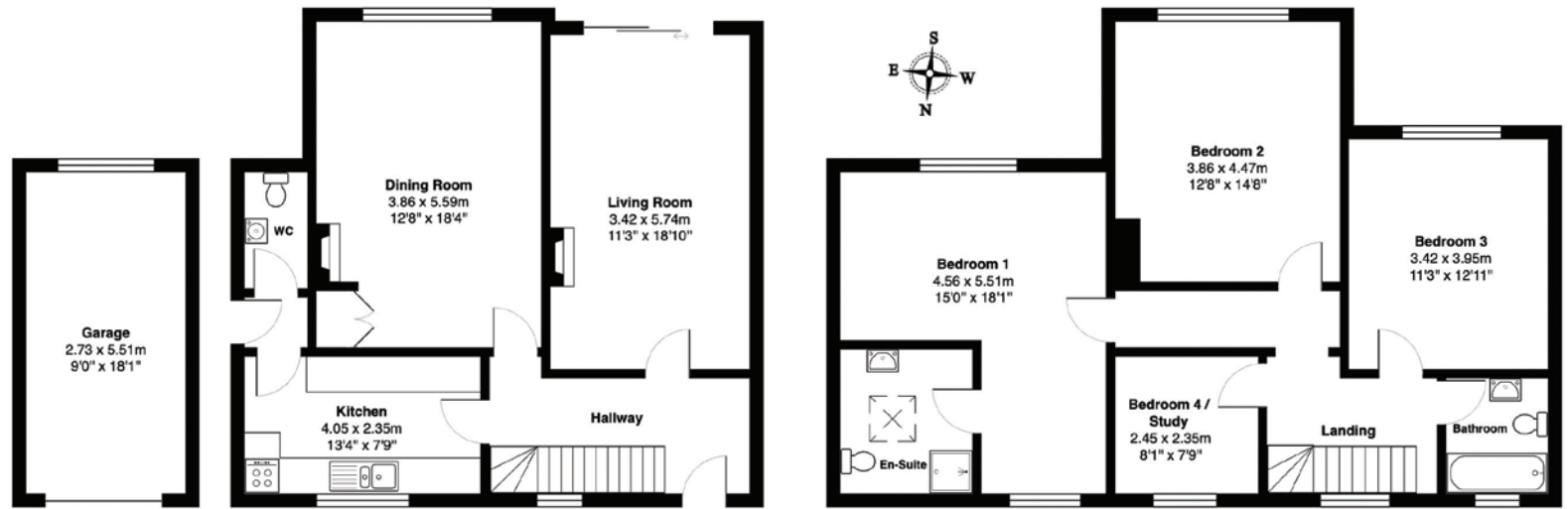
Walking distance to local pub





COLIN CATTERMOLLE
HIVE Partner for Swanage

This lovely home provides spacious accommodation in a beautiful rural setting. The village has a range of amenities, including a welcoming pub and a reputable school. Located just two miles from Swanage town centre with its bars, restaurants, quaint independent boutiques, and nostalgic steam railway.



Total Area: 160.5 m² ... 1727 ft²
All measurements are approximate and for display purposes only



Scan the QR code for my latest property listings and social channels.





HIVE & Partners, Swanage c/o The Hive, Wilson House, 2 Lorne Park Road, Bournemouth BH1 1JN
01929 408 419 | www.hiveandpartners.co.uk