



HIVE

7 SHORE GARDENS
UPTON
POOLE
BH16 5DX



presented by
MATTHEW WILSON
HIVE Partner for Poole/Broadstone
01202 122 002



Agent's introduction

This well presented five bedroom detached home is situated in a sought-after cul-de-sac in Upton, close to the beautiful Lytchett Bay. The property has been extended to offer spacious and versatile accommodation, and has a good sized garden with summerhouse.

Seller's introduction

We've lived in this home for 20 years and we have loved our time here. It's a quiet road, and we can walk to the shops, the nature reserve and Upton Country Park from here.







Property highlights

Modern fitted kitchen with separate utility room

Large living room

Dining room with French doors to the garden

En-suite to principal bedroom

Downstairs cloakroom

Quiet cul-de-sac location

Off road parking

Good size garden with summerhouse and storage shed

No forward chain



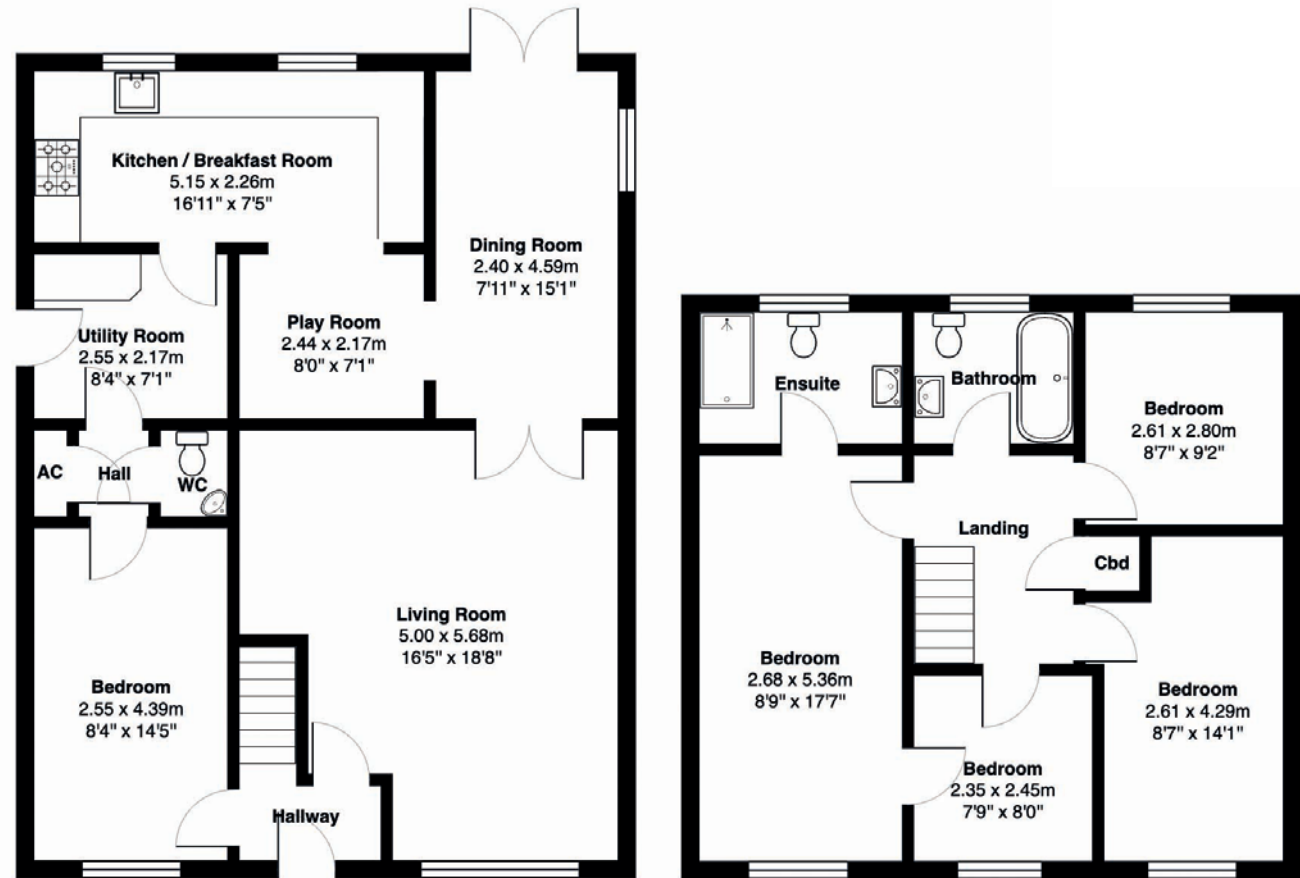


MATTHEW WILSON
HIVE Partner for Poole/Broadstone

This is an exciting opportunity to purchase a lovely home in a road where properties are rarely available. There are several highly regarded schools in the area, including Lytchett Minster School and Upton Infants and Junior School. Local amenities, Lytchett Bay Nature Reserve and Lytchett Bay Country Park are a short level walk away, with Hamworthy Park just over two miles away.



Scan the QR code for my latest property listings and social channels.



Total Area: 136.3 m² ... 1467 ft²

All measurements are approximate and for display purposes only





HIVE & Partners, Poole, Broadstone & Corfe Mullen c/o The Hive, Wilson House, 2 Lorne Park Road, Bournemouth BH1 1JN

01202 122 002 | www.hiveandpartners.co.uk