



HIVE

17A MANOR ROAD
SWANAGE
BH19 2BH



presented by
COLIN CATTERMOLE
HIVE Partner for Swanage
01929 408 419



Agent's introduction

This unique four bedroom detached home has a well thought out layout and high-end finishes, creating a space that seamlessly combines style and functionality. The property is situated in an elevated position with stunning panoramic views, and is within walking distance of the beach.

Seller's introduction

Designing and building our home four years ago was an immensely gratifying experience for our family. It was meticulously planned in collaboration with our architect to ensure it met our needs. We've cherished every moment here, and created wonderful memories. We'll miss this home dearly, but we're excited about our next project and the opportunities it will bring.







Property highlights

Designed by renowned local architect

Triple aspect, open plan living space

Herringbone flooring

Low maintenance garden

Panoramic town and sea views

Ample off road parking

En-suites to two of the bedrooms

Porcelanosa tiles in the bathroom
and en-suites

0.4 miles from Swanage beach
and the town centre









4 bedrooms

1 bathroom, 2 en-suites, plus a downstairs cloakroom

Open plan kitchen/lounge/diner

1,816.7 sq ft of accommodation

Accommodation overview





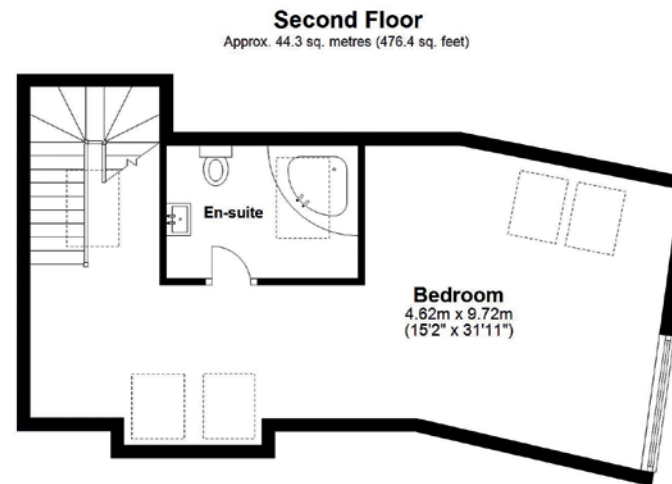
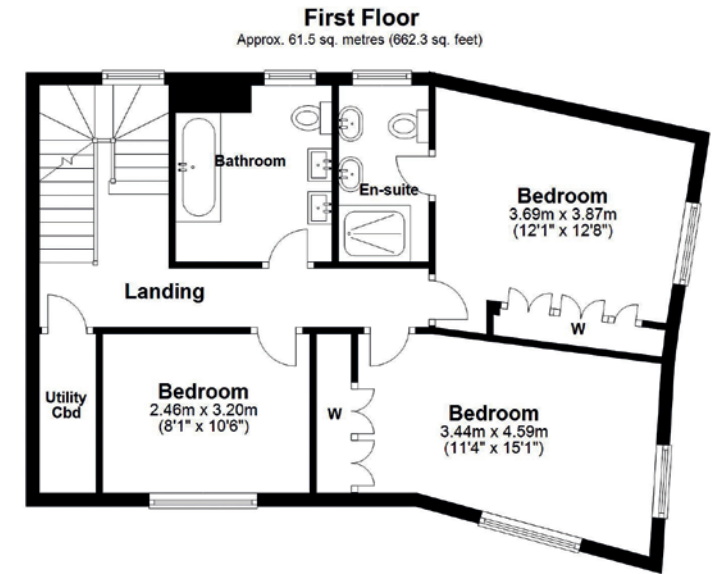
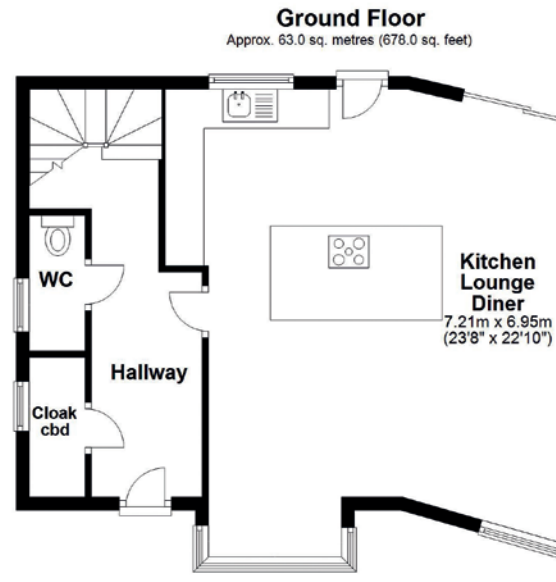


COLIN CATTERMOLLE
HIVE Partner for Swanage

Situated in a prime location, just 0.4 miles from Swanage beach front and 0.5 miles from Durlston Country Park, this bespoke property has a lot to offer. It makes a fantastic home, with light, spacious living areas, high spec kitchen and bathrooms, and breathtaking views.



Scan the QR code for my latest property listings and social channels.



Total area: approx. 168.8 sq. metres (1816.7 sq. feet)





HIVE & Partners, Swanage c/o The Hive, Wilson House, 2 Lorne Park Road, Bournemouth BH1 1JN
01929 408 419 | www.hiveandpartners.co.uk