



Eccleston House

1 Eccleston House





“

“What I love about this property is its location. It is in the perfect spot to enjoy town centre living, Bournemouth’s amazing coastline and is just a short distance from the New Forest. Eccleston House is the ideal family home with 7 bedrooms, 4 bathrooms and lots of living space. I don’t know of many properties that offer as much” *James Evans*

Agent’s introduction

Seller’s insight

“We purchased Eccleston House almost 6 years ago, falling in love with the character of the property. It is such a great location, just up the road you have Meyrick Park, great for dog walks, and the town centre is close by. Eccleston has been wonderful for our extended family, with an annex at the top of the house that has been perfect for our son and his family”

”



Beautifully presented Edwardian home
Original stained-glass windows
Herringbone parquet flooring to all reception rooms





Spacious living room with dual aspect windows
Bi-folding doors leading to south-easterly garden
Original open fireplace



Stunning original features
Feature bay with original sash windows
Fantastic ceiling heights throughout



Eccleston House, Meyrick Park

1 St Winifreds Road, Bournemouth, Dorset BH2 6NY



7 bedrooms & 4 bathrooms

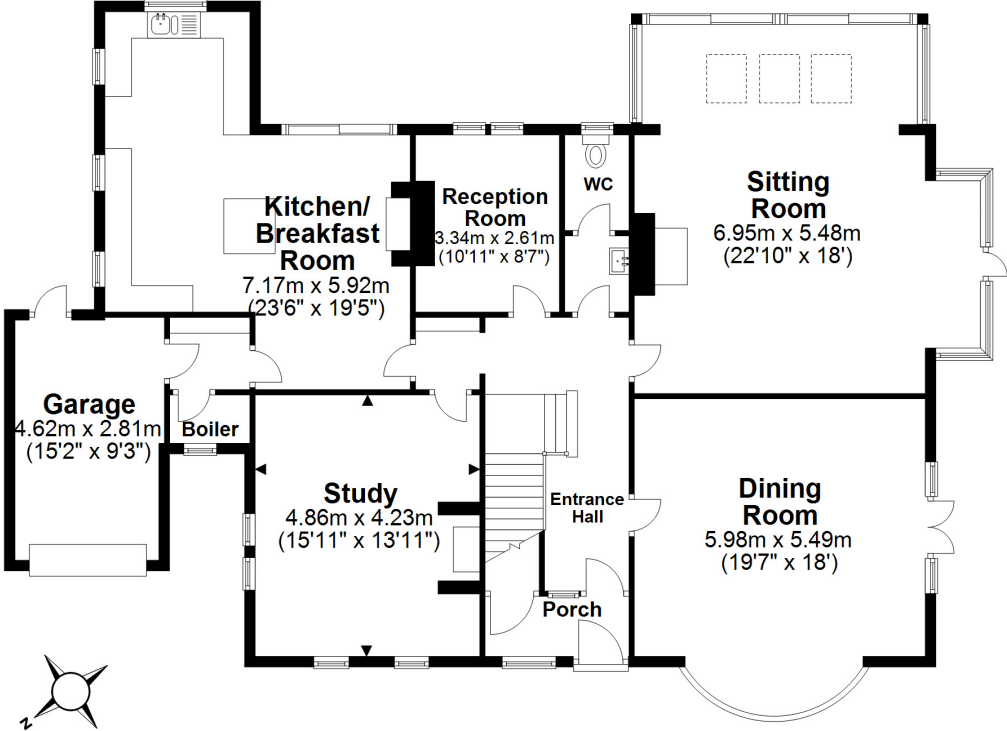
plus study, playroom, living and dining rooms



Period style claw foot bath
Immaculately presented
Original sash window

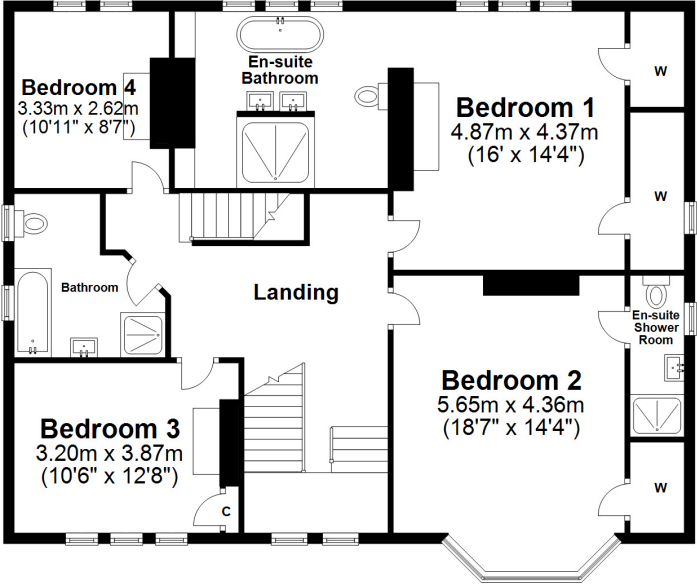
Ground Floor

Approx. 172.5 sq. metres (1857.2 sq. feet)



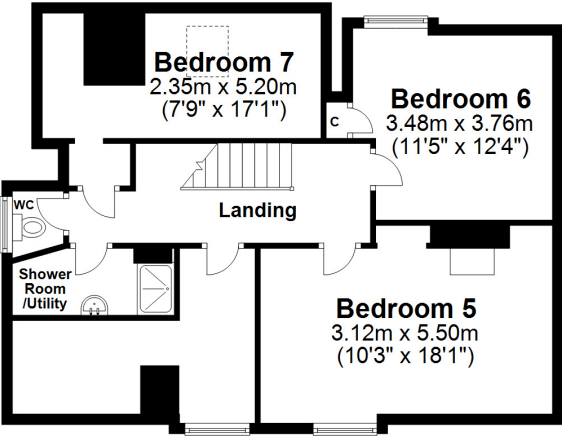
First Floor

Approx. 123.8 sq. metres (1332.3 sq. feet)



Second Floor

Approx. 72.6 sq. metres (781.1 sq. feet)



Total area: approx. 368.9 sq. metres (3970.6 sq. feet)



The property is in a brilliant location close to Meyrick Park, which offers a golf course and a health centre set within 120 acres of scenic parkland. Eccleston House is less than a mile from Bournemouth Town Centre, which offers high street shops, bars and restaurants alongside award winning sandy beaches. Bournemouth station has a direct link to London Waterloo, taking approximately 2 hours, ideal if you need to get into the city for work or fun.



HIVE

Hive and Partners, The Hive, Wilson House, 2 Lorne Park Road, Bournemouth, BH1 1JN
01202 122 002 | www.hiveandpartners.co.uk