



HIVE

122 EDWARD ROAD
CHRISTCHURCH
BH23 3EW



presented by
TRACEY DWIGHT
Associate Partner for Highcliffe/New Milton
01425 546 468



Agent's introduction

The property is located 1.5 miles from Christchurch town centre and less than 2 miles from the stunning Avon Beach and the impressive Highcliffe Castle. It is a well presented three bedroom home with a lovely and bright kitchen/ dining room/conservatory, which leads to a large rear garden.

Seller's introduction

We've loved living here. It's a really quiet road and we can walk into the town centre in a few minutes. We're also close to the schools, the leisure centre and some beautiful beaches too.







Property highlights

Large rear garden

Off road parking

Cul-de-sac location

Downstairs cloakroom

1.3 miles from the Two Riversmeet
Leisure Complex

1.6 miles from Avon Beach

Within walking distance to
Christchurch town centre





TRACEY DWIGHT

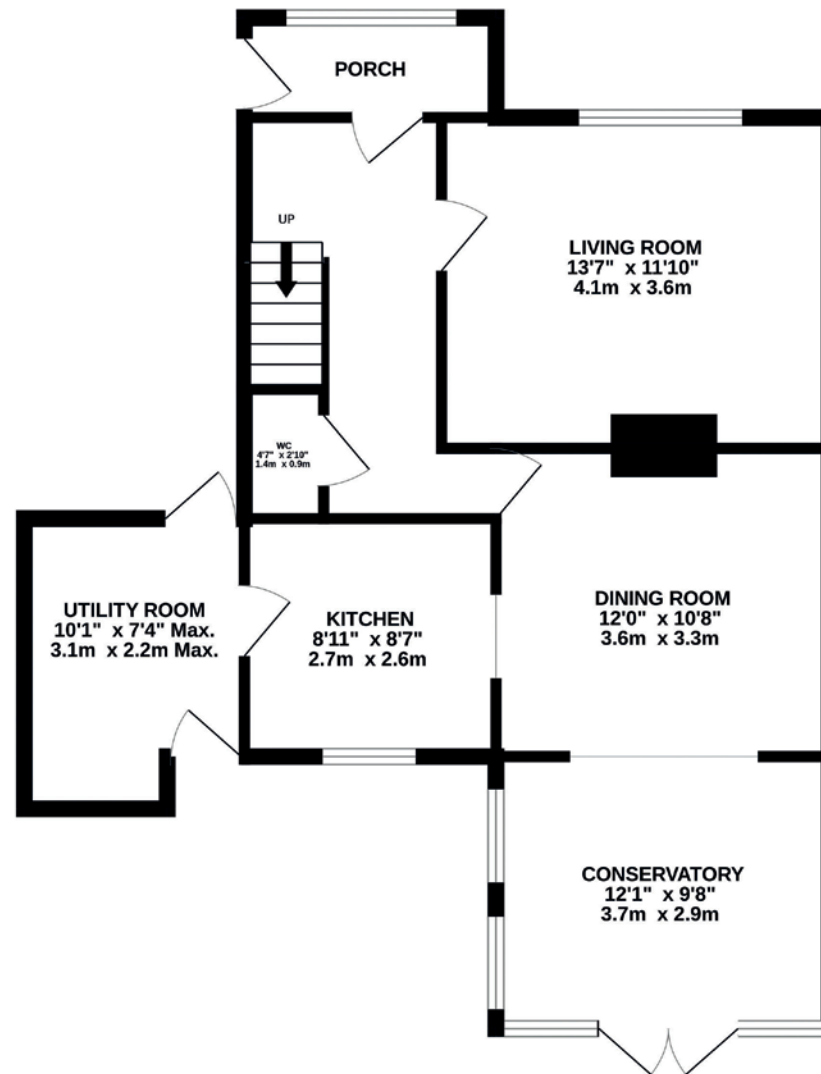
Associate Partner for Highcliffe/New Milton

This versatile family home is located in a quiet cul-de-sac, close to the popular town of Christchurch, with its shops, cafés, restaurants and bars. The imposing 18th Century Highcliffe Castle with its beautiful grounds is approx. 2.3 miles away. With the train station close by, you also have easy access to the larger towns of Bournemouth and Poole and miles of award winning sandy beaches.

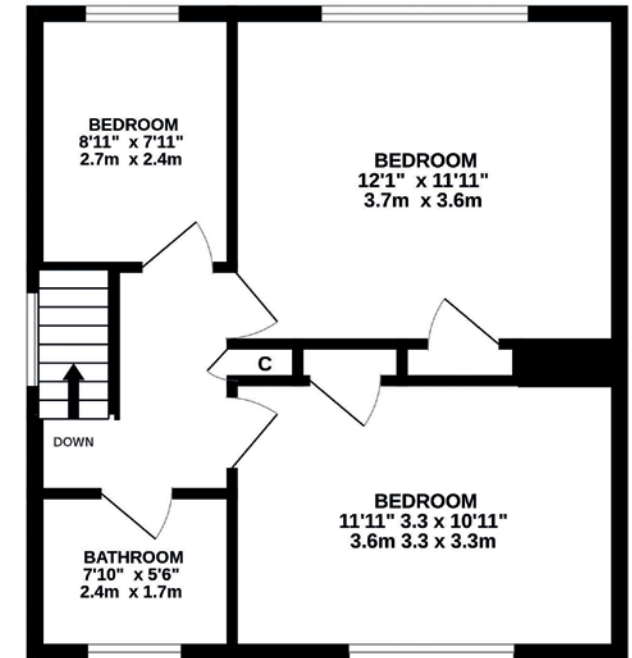


Scan the QR code for my latest property listings and social channels.

Ground Floor



First Floor



Total Area
Approx 103 sq metres (1109 sq ft)





HIVE & Partners, Highcliffe/New Milton c/o The Hive, Wilson House, 2 Lorne Park Road, Bournemouth BH1 1JN
01425 546 468 | www.hiveandpartners.co.uk