



HIVE

6 MONTEREY PLACE
WEYMOUTH
DT3 5FT



presented by
JAMES FARRAN
HIVE Partner for Dorchester/Weymouth
01305 571 757



Agent's introduction

This impressive home is part of a new development by Koori Ltd. Their ethos is to provide customers with homes that are larger and better equipped than other new houses, and they have certainly achieved that with Monterey Place. Having worked with this developer in the past, I have always been impressed with the finish of their projects, and this one is no different.

Seller's introduction

Monterey Place allows you to enjoy both town and country living. Situated next to the desirable Lorton Park, and surrounded by countryside, you are also less than six miles from Weymouth with its shops, restaurants, cafés and beautiful sandy beaches.







Property highlights

10 year LABC warranty

Double garage with electric
up-and-over door

Four bedrooms: two with en-suite
shower rooms and Juliet balconies

Under floor heating (ground floor)
and air source heat pump

Fitted wardrobes

Bespoke kitchen by Helix Interiors





JAMES FARRAN

HIVE Partner for Dorchester/Weymouth

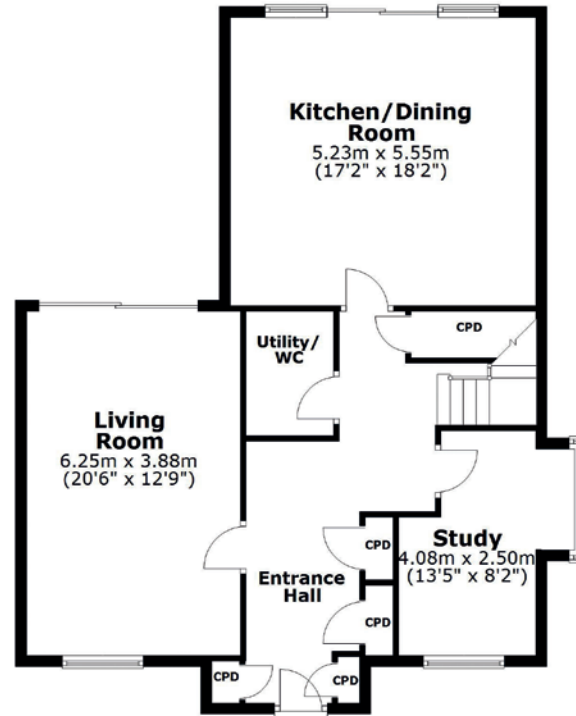
This exceptional home offers ample living space, spanning an impressive 2,336 square feet – the largest in the collection. The wrap-around garden, expansive garage, parking for two cars, along with Juliet balconies to the en-suite bedrooms, makes this a luxurious and versatile family home. Set in a stunning rural location, less than six miles from Weymouth and ten miles from Dorchester.



Scan the QR code for my latest property listings and social channels.

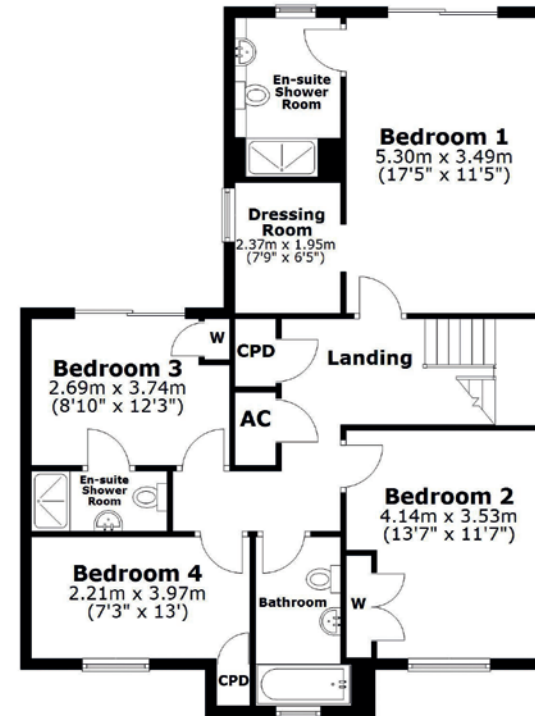
Ground Floor

Approx. 90.6 sq. metres (975.7 sq. feet)



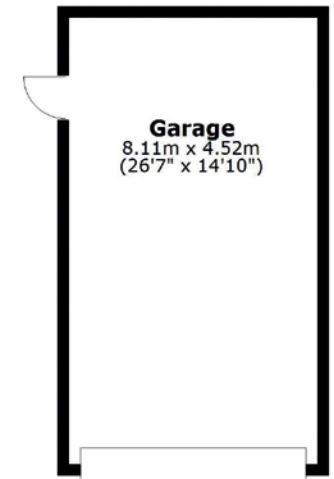
First Floor

Approx. 89.7 sq. metres (965.7 sq. feet)



Garage

Approx. 36.7 sq. metres (394.6 sq. feet)



Total area: approx. 217.0 sq. metres (2336.0 sq. feet)

This plan is not to scale and it is for general guidance only. LJT Surveying Ltd Ringwood





HIVE & Partners, Dorchester & Weymouth c/o The Hive, Wilson House, 2 Lorne Park Road, Bournemouth BH1 1JN

01305 571 757 | www.hiveandpartners.co.uk