



# HIVE

9 GREYS ROAD  
CHICKERELL  
WEYMOUTH  
DT3 4FS



*presented by*  
JAMES FARRAN  
HIVE Partner for Dorchester/Weymouth  
01305 571 757



## *Agent's introduction*

This beautiful five bedroom detached townhouse is well presented and is in a great location, surrounded by green space and country walks, with the beach just a short drive away.

## *Seller's introduction*

We will really miss living here. Having Weymouth on our doorstep, and the coastline nearby has been great, especially during the summer. This has been a wonderful family home for us, and having the bedrooms split over two floors has ensured privacy when we have guests to stay!







## *Property highlights*

Energy efficient home - EPC B

Garage and off road parking

Two en-suite shower rooms

Close to bus stop and local shops

Conservatory

Low maintenance garden

Just 3.5 miles from Weymouth town centre and its sandy beaches





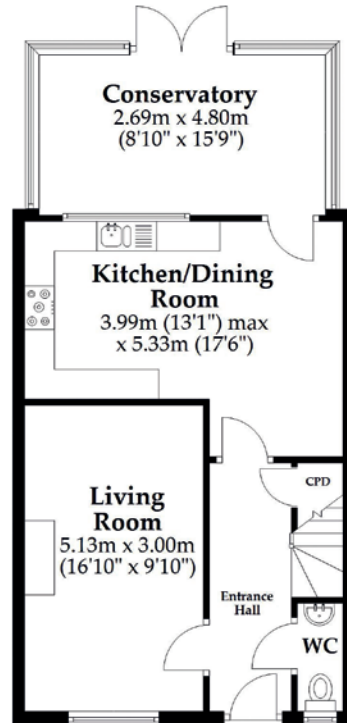
JAMES FARRAN

HIVE Partner for Dorchester/Weymouth

Situated in the sought-after Grey's Field neighbourhood, this impeccably presented home has five bedrooms and provides spacious and versatile accommodation, set over three floors. The property overlooks a pretty green to the front, and is just a short drive to Weymouth.

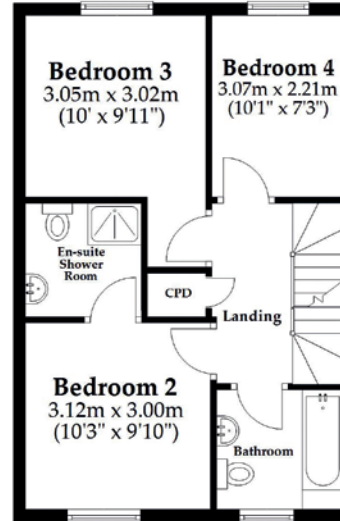
### Ground Floor

Approx. 57.3 sq. metres (616.6 sq. feet)



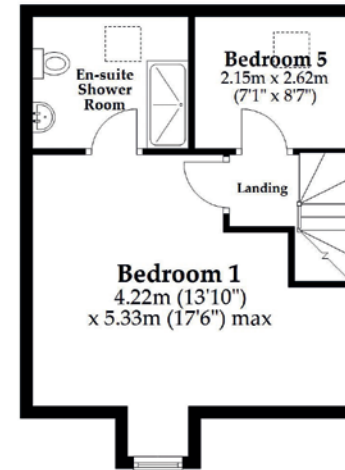
### First Floor

Approx. 43.9 sq. metres (472.9 sq. feet)



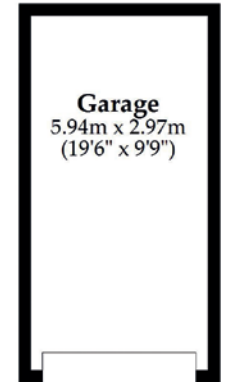
### Second Floor

Approx. 35.4 sq. metres (381.2 sq. feet)



### Garage

Approx. 17.7 sq. metres (190.1 sq. feet)



Total area: approx. 154.3 sq. metres (1660.7 sq. feet)

This plan is not to scale and it is for general guidance only. LJT Surveying Ltd Ringwood



Scan the QR code for my latest property listings and social channels.





**HIVE & Partners, Dorchester & Weymouth** c/o The Hive, Wilson House, 2 Lorne Park Road, Bournemouth BH1 1JN

01305 571 757 | [www.hiveandpartners.co.uk](http://www.hiveandpartners.co.uk)