



HIVE

3 FAIRFIELD ROAD
BARTON ON SEA
BH24 7NJ



presented by
TRACEY DWIGHT
01425 546 468



Agent's introduction

There's a lot to love about this eco friendly detached house. From the fantastic location to the extensive renovation with high end specification, it makes a wonderful family home.

Seller's introduction

We moved here five years ago with a clear vision to turn this house into our forever home. Barton on sea is not touristy, yet we are so close to the beach, great walks and restaurants. It's our perfect home, and if we could move it to our daughter's new location we would.







Property highlights

- Extensive kitchen/dining/family room
- Underfloor heating to the ground floor
- Garden room/snug
- Stunning galleried landing
- Three double bedrooms with en-suites
- Additional fourth bedroom/home office on the ground floor
- Dressing room to principal bedroom
- Large easy maintenance garden
- Solar roof panels
- 0.3 miles to Barton cliff top









4 double bedrooms

3 en-suite bathrooms, 1 cloakroom

Open plan kitchen/dining/family room

Separate living room

Total area 2,154 sq ft (inc garage)

Accommodation overview







TRACEY DWIGHT

Associate Partner for Highcliffe/New Milton

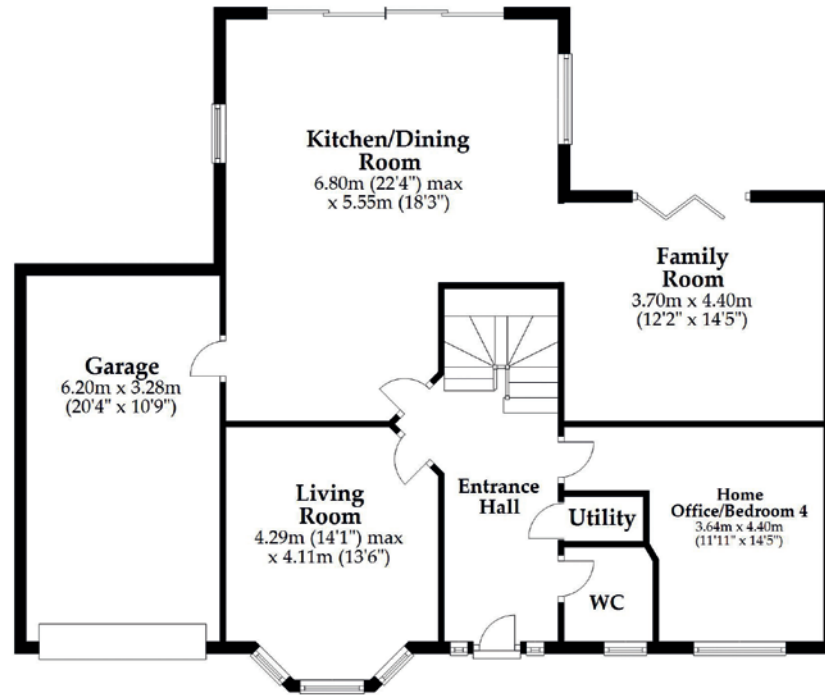
This character home has been beautifully refurbished and remodelled to an exacting standard, with features such as Porcelanosa tiled floors, an oak and glass staircase and high spec kitchen appliances. The property is situated just 0.3 miles from the cliff top at Barton on Sea, where you'll find cafés, coastal walks, and incredible views.



Scan the QR code for my latest property listings and social channels.

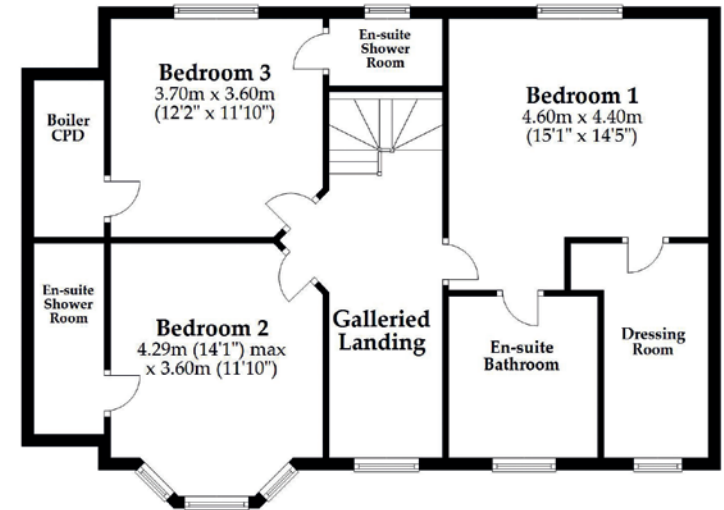
Ground Floor

Approx. 115.0 sq. metres (1237.7 sq. feet)



First Floor

Approx. 85.2 sq. metres (916.9 sq. feet)



Total area: approx. 200.2 sq. metres (2154.6 sq. feet)

This plan is not to scale and it is for general guidance only. LJT Surveying Ltd Ringwood





HIVE & Partners, Highcliffe/New Milton c/o The Hive, Wilson House, 2 Lorne Park Road, Bournemouth BH1 1JN

01425 546 468 | www.hiveandpartners.co.uk