



HIVE

SUSAN'S COURT
EAST DROVE
LANGTON MATRAVERS
SWANAGE
BH19 3HF



presented by
COLIN CATTERMOLE
HIVE Partner for Swanage
01929 408 419



Agent's introduction

If you're looking for a property with character and charm in the heart of the village, then Susan's Court is not to be missed. Surrounded by open countryside and close to the Jurassic coastal paths, this well presented detached two bedroom cottage has a lot of appeal.

Seller's introduction

We purchased the cottage due to its location, views and the potential it had at the time. It's been a wonderful home, the village has such a close-knit community and our favourite pub is just a short walk from here.







Property highlights

Exposed stone walls

Vaulted ceiling in the conservatory

Working log burner

Downstairs cloakroom

Allocated parking

Favoured village location





COLIN CATTERMOLLE
HIVE Partner for Swanage

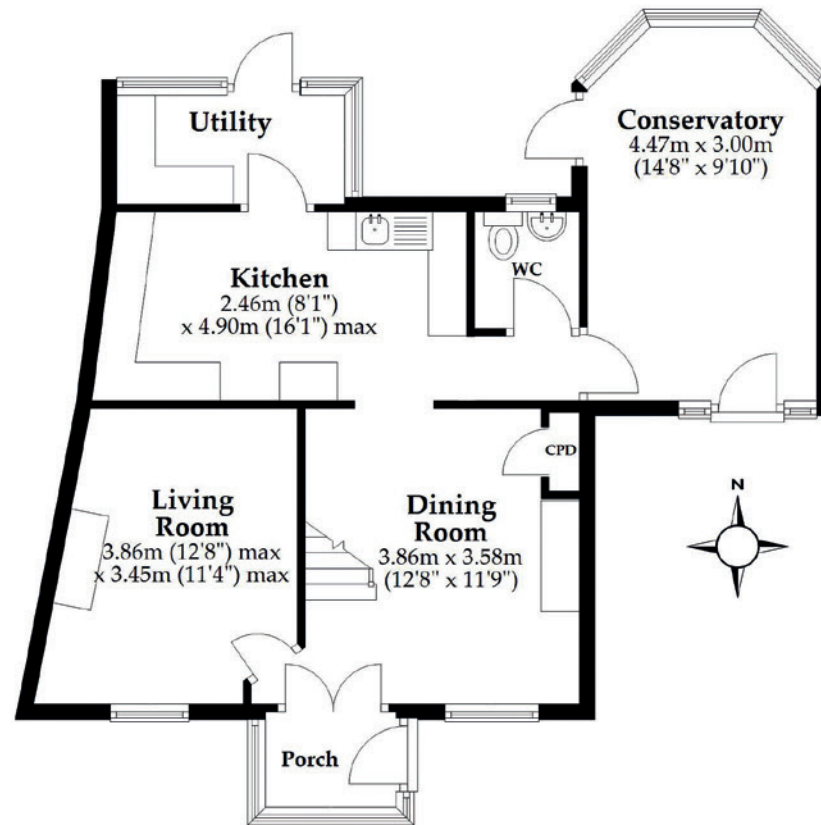
Dating back to the 19th Century, this picturesque detached cottage has two double bedrooms, countryside and sea views and lots of character features. Langton Matravers is a quaint village with traditional stone cottages, notably crafted from local Purbeck stone. The village is surrounded by rolling hills and coastal trails along the Jurassic Coast and just 2.5 miles from the seaside town of Swanage.



Scan the QR code for my latest property listings and social channels.

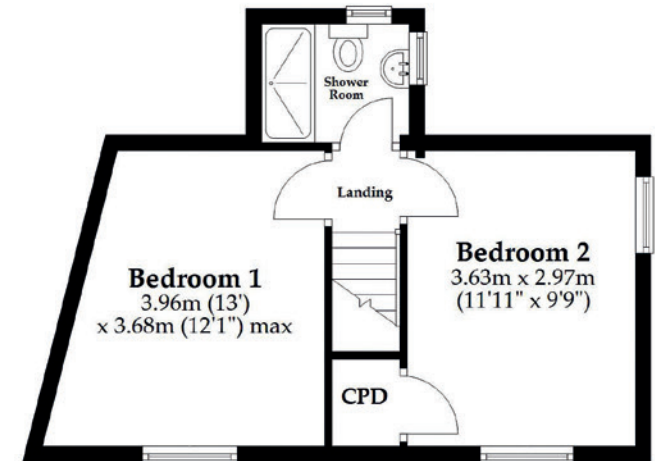
Ground Floor

Approx. 63.0 sq. metres (677.9 sq. feet)



First Floor

Approx. 30.5 sq. metres (328.0 sq. feet)



Total area: approx. 93.5 sq. metres (1005.9 sq. feet)

This plan is not to scale and it is for general guidance only. LJT Surveying Ltd Ringwood





HIVE & Partners, Swanage c/o The Hive, Wilson House, 2 Lorne Park Road, Bournemouth BH1 1JN
01929 408 419 | www.hiveandpartners.co.uk