



HIVE

”

A two bedroom first floor apartment, situated just 400m from both Swanage town centre and the beautiful sandy beaches. With pleasant southerly views, allocated parking and communal grounds, this property has a lot of potential.

Agent's introduction





Allocated parking | Two minute walk to the beach | No forward chain

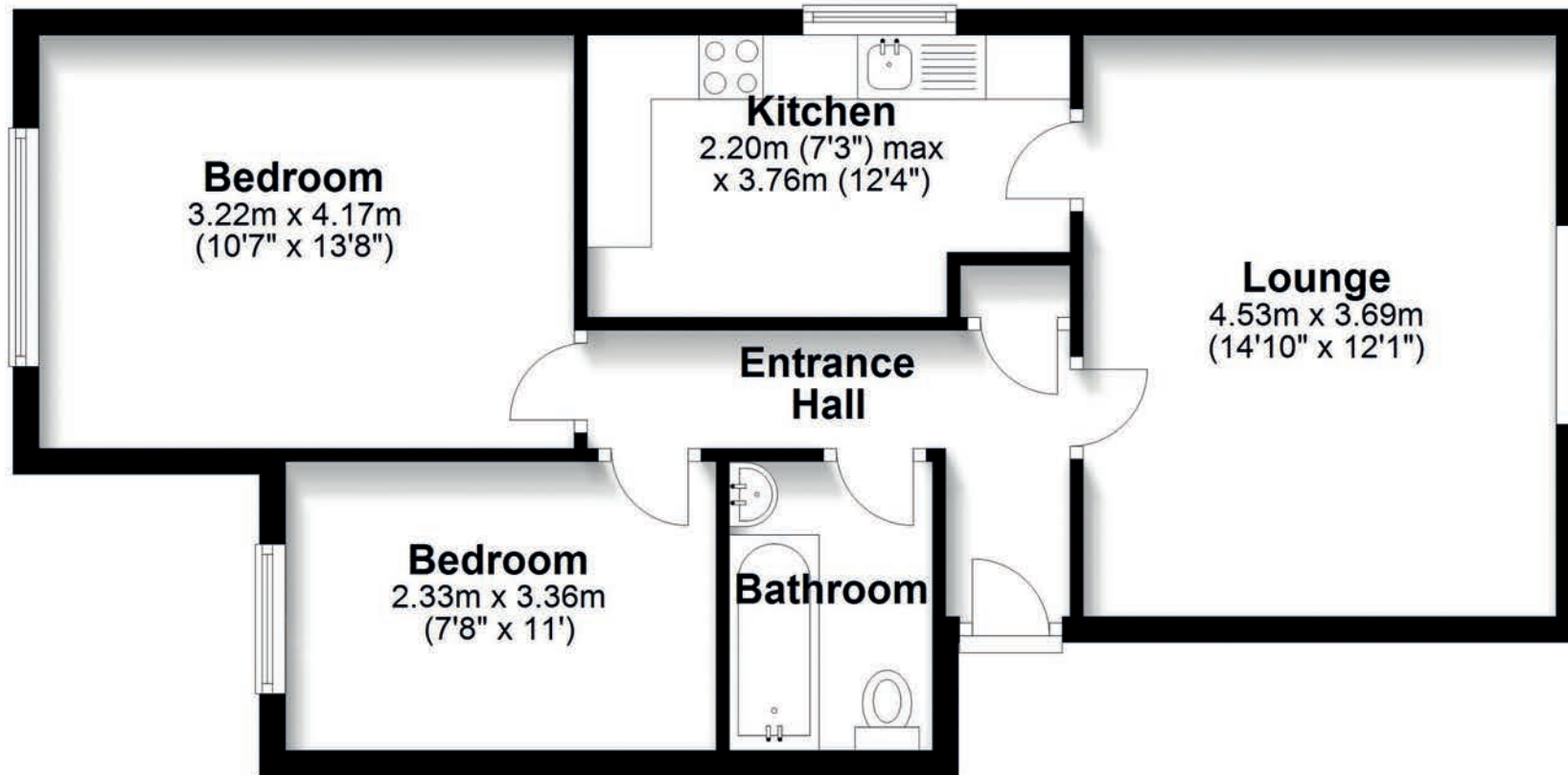




Short lease | Great investment property | 400m from the town centre

First Floor

Approx. 56.6 sq. metres (609.1 sq. feet)



Total area: approx. 56.6 sq. metres (609.1 sq. feet)





A two bedroom flat set in an idyllic location, close to the sea and the charming and well-loved town of Swanage. Situated on the scenic Jurassic Coast, with award-winning sandy beaches and a picturesque pier, Swanage offers an abundance of attractions including shops, restaurants, pubs, a theatre, a country park, and a nostalgic steam railway.



HIVE

HIVE & Partners, Swanage c/o The Hive, Wilson House, 2 Lorne Park Road, Bournemouth BH1 1JN
01202 122 002 | www.hiveandpartners.co.uk