



ALUM CHINE ROAD



HIVE



“

This character detached home is within walking distance of Westbourne Village, where you'll find some of my favourite coffee shops and places to eat, including Ounce, Big Wiggs and Francos Yard.

*Agent's introduction*

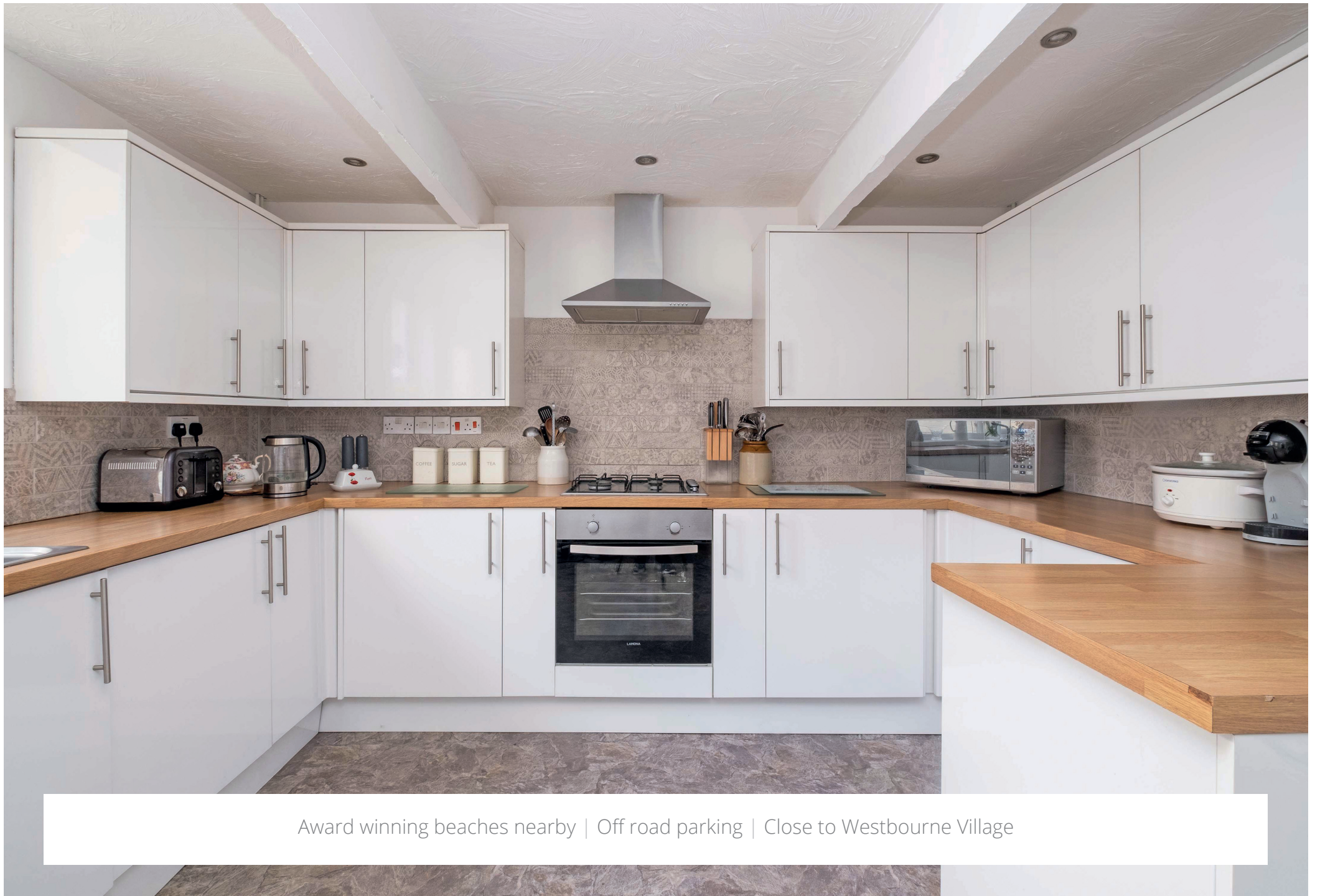
”

We've really enjoyed living here, we have great neighbours and can walk to the beach in just 20 minutes. We're so close to the high street too which has some great shops and restaurants.

*Seller's insight*







Award winning beaches nearby | Off road parking | Close to Westbourne Village







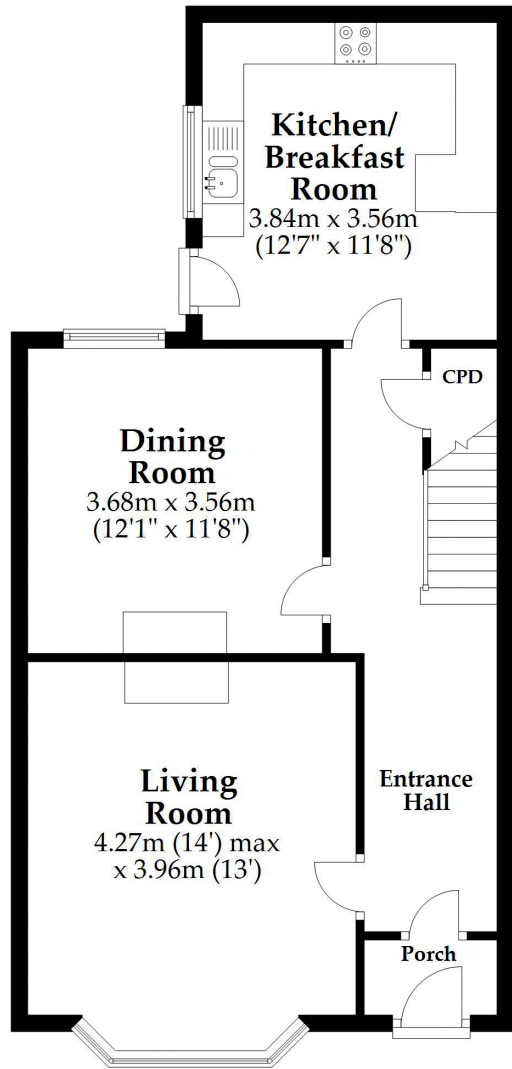


Attractive bay windows in the living room | En-suite and family bathroom | Private courtyard



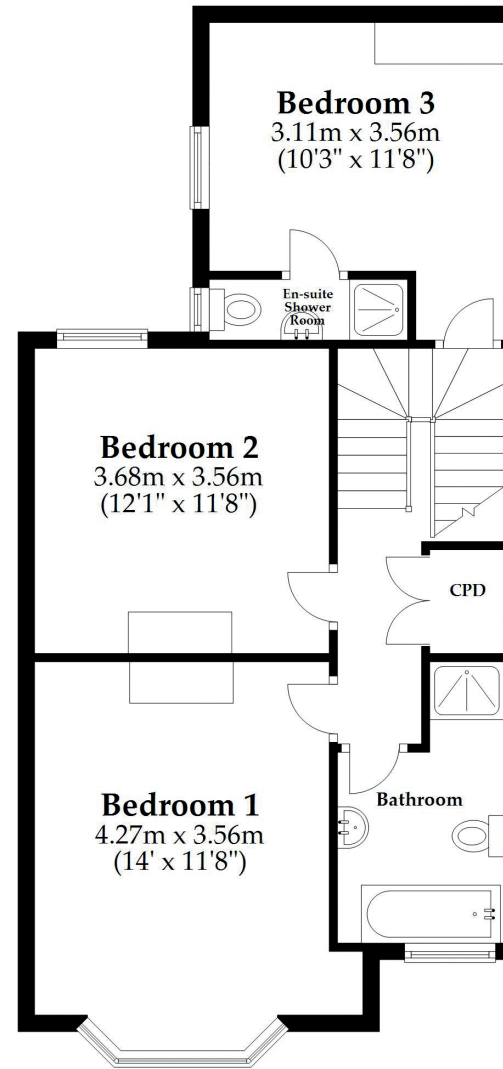
## Ground Floor

Approx. 60.0 sq. metres (645.6 sq. feet)



## First Floor

Approx. 58.8 sq. metres (632.9 sq. feet)



Total area: approx. 118.8 sq. metres (1278.5 sq. feet)

This plan is not to scale and it is for general guidance only. LJT Surveying Ltd Ringwood









A three double bedroom detached house, located close to Westbourne Village, with its range of local shops, cafés and restaurants. The larger town of Bournemouth is approximately 1.5 miles away, with a selection of high street stores, restaurants and theatres. The beach at Alum Chine is less than a mile walk away, where there is access to a level promenade stretching from Sandbanks to Hengistbury Head.



# HIVE

**HIVE & Partners, Bournemouth** The Hive, Wilson House, 2 Lorne Park Road, Bournemouth BH1 1JN  
01202 122 002 | [www.hiveandpartners.co.uk](http://www.hiveandpartners.co.uk)