




LAKE DRIVE



HIVE



An aerial photograph of a residential neighborhood. In the foreground, a large white house with a prominent red-tiled roof and a bay window is visible. The house is surrounded by a well-maintained lawn and a driveway. To the left, a road curves through the neighborhood, with several cars parked along the side. In the background, other houses of various colors and styles are scattered across a green landscape. The overall scene depicts a peaceful suburban setting.

I'm delighted to present this incredibly spacious property for sale. It has a lot to offer with an open-plan living space, a generous garden, double garage, ample parking and Poole Harbour views from the main bedroom.

*Agent's introduction*

We've loved living here, with Lake Pier and Sandbanks beaches nearby for our dog walks. Poole is close too, with the Jazz Cafe, and Quay restaurants such as Custom House and Da Vinci's. We also enjoy the local club at Lake Yard Marina with its harbour view.

*Seller's insight*





Double plot | Open plan living with underfloor heating | Opposite Lake Pier Beach









Smeg range gas hob | Four sets of French doors to the gardens | Stunning harbour views











5 bedrooms, 2 en-suites, 1 bathroom

open plan living/kitchen/dining room and utility room



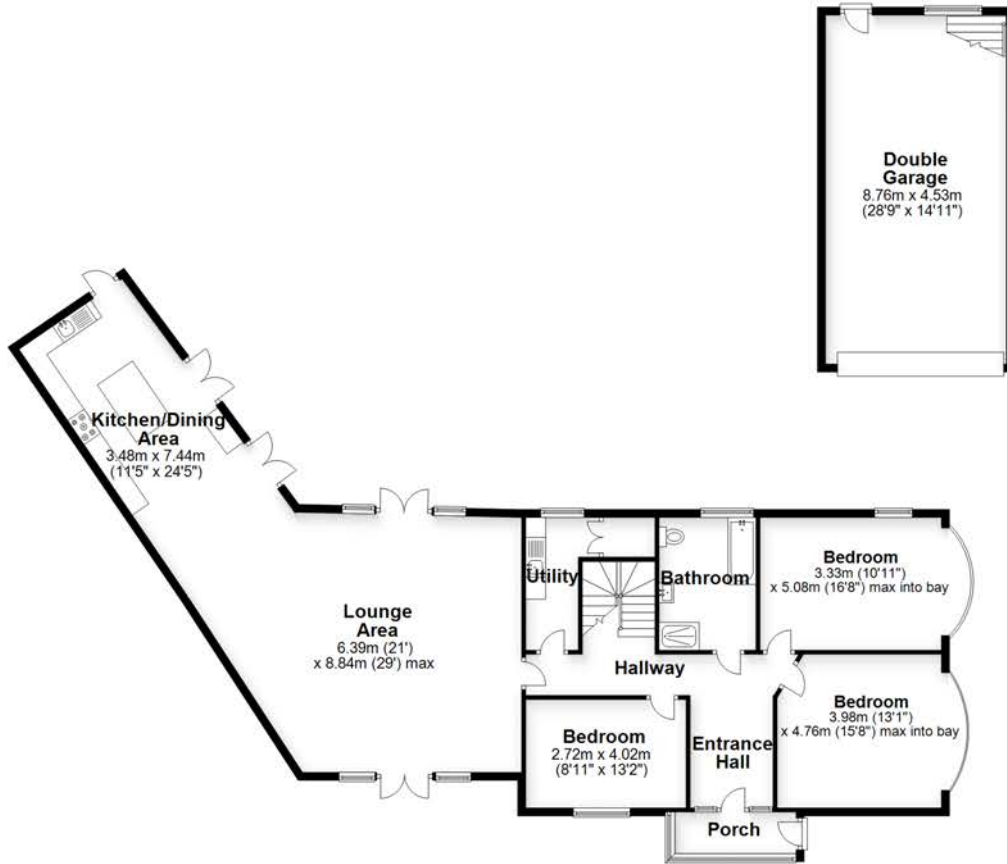


Five double bedrooms | Family bathroom with separate shower | Double garage with loft space



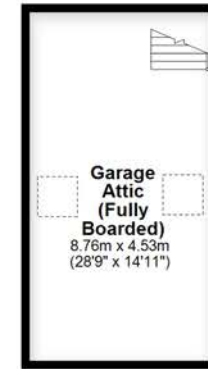
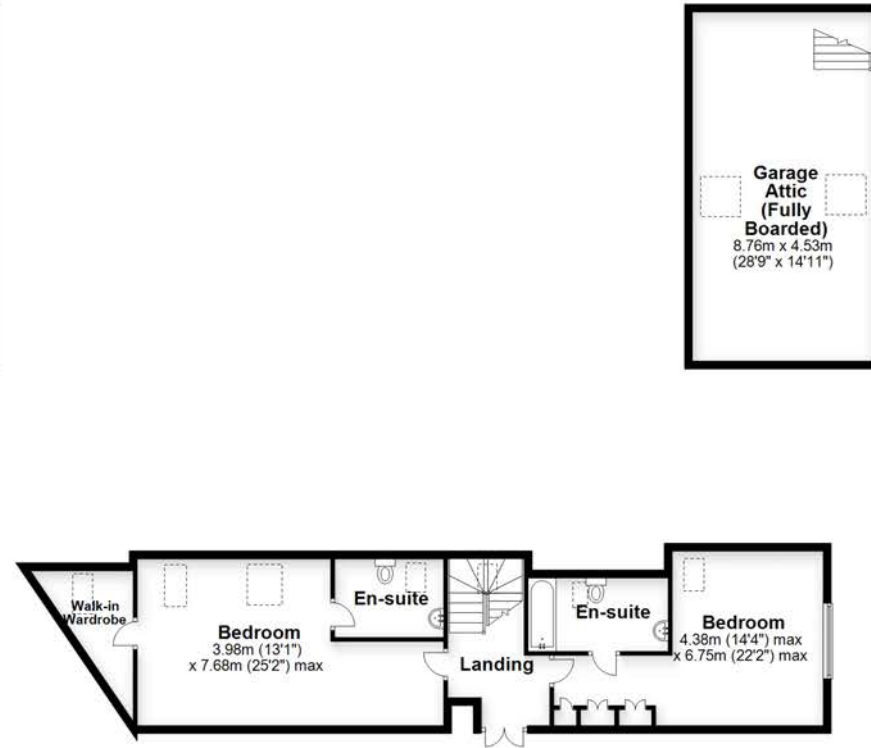
### Ground Floor

Approx. 189.8 sq. metres (2042.7 sq. feet)



### First Floor

Approx. 114.1 sq. metres (1228.6 sq. feet)



Total area: approx. 303.9 sq. metres (3271.3 sq. feet)





This immaculate five bedroom chalet bungalow is in an idyllic location, close to Lake Yard Marina and Lake Pier Beach. With both Upton Country Park and Hamworthy Park also close by. Poole town centre is a short ten minute drive away with the Lighthouse arts centre and range of shops, bars, cafés and restaurants.





HIVE

**HIVE & Partners**, The Hive, Wilson House, 2 Lorne Park Road, Bournemouth BH1 1JN  
01202 122 002 | [www.hiveandpartners.co.uk](http://www.hiveandpartners.co.uk)