



SEACROFT AVENUE



HIVE

“

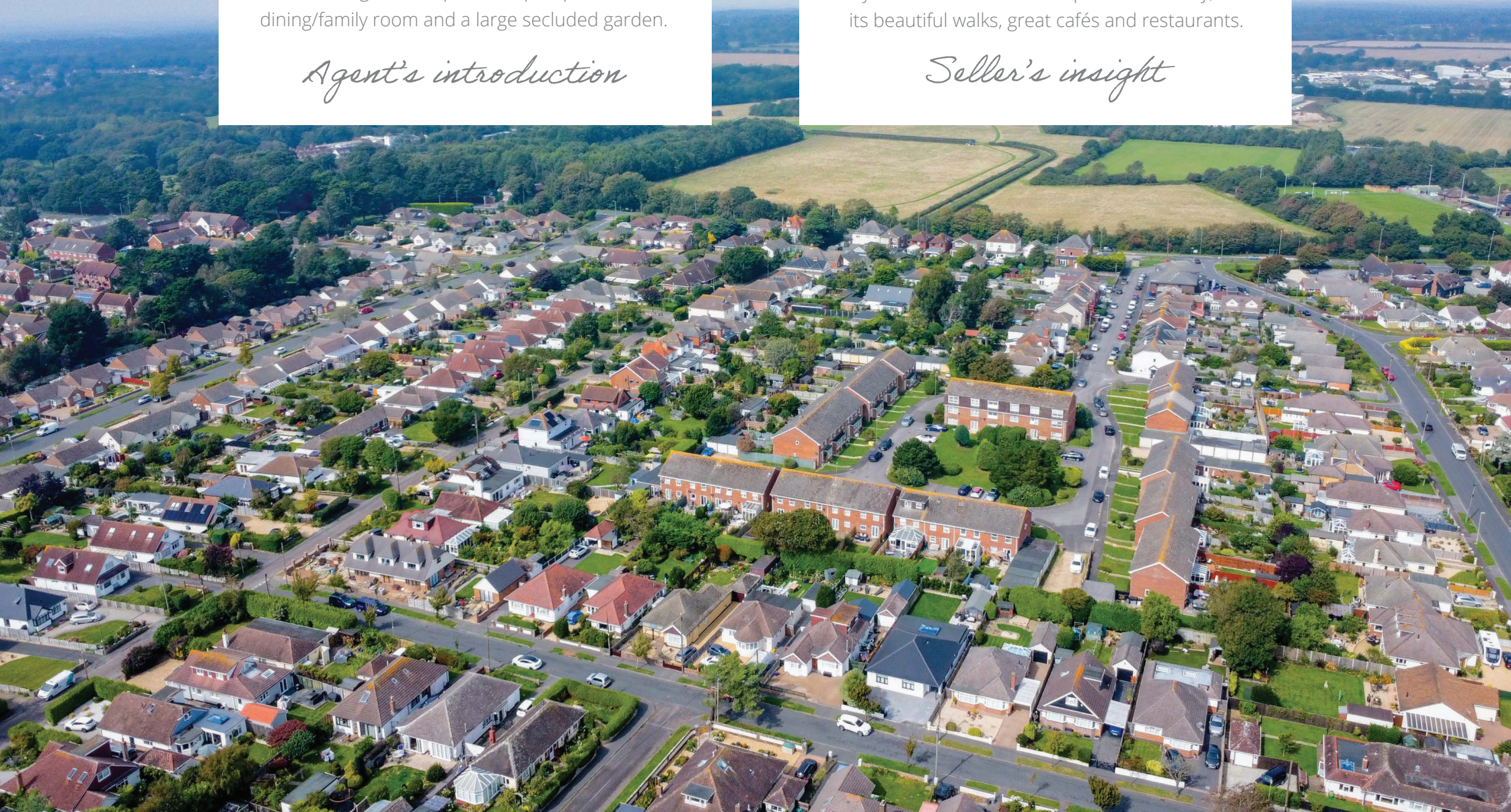
The moment I arrived at Seacroft Avenue I was struck by how quiet the road is. The property is perfect for socialising with a spacious open plan kitchen/ dining/family room and a large secluded garden.

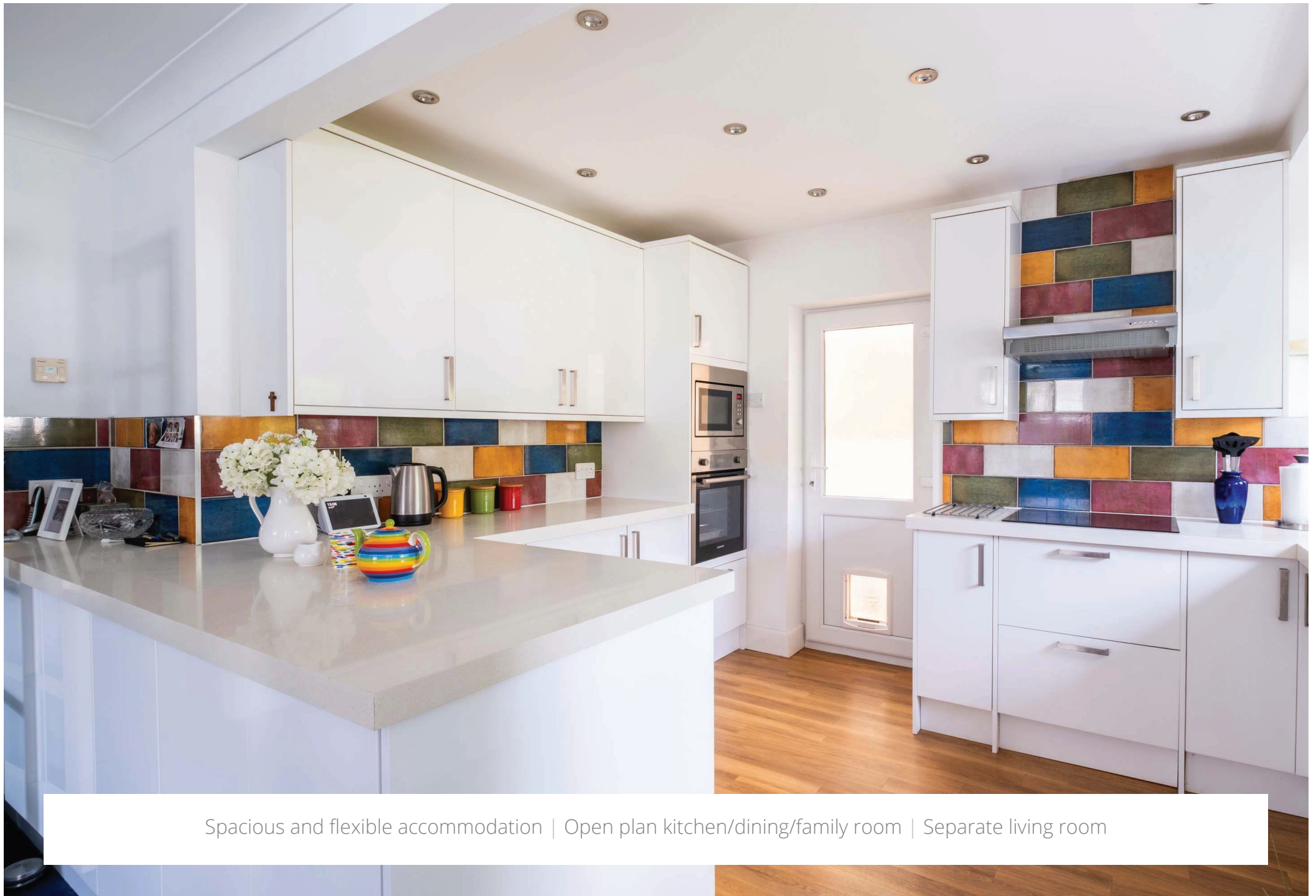
*Agent's introduction*

“

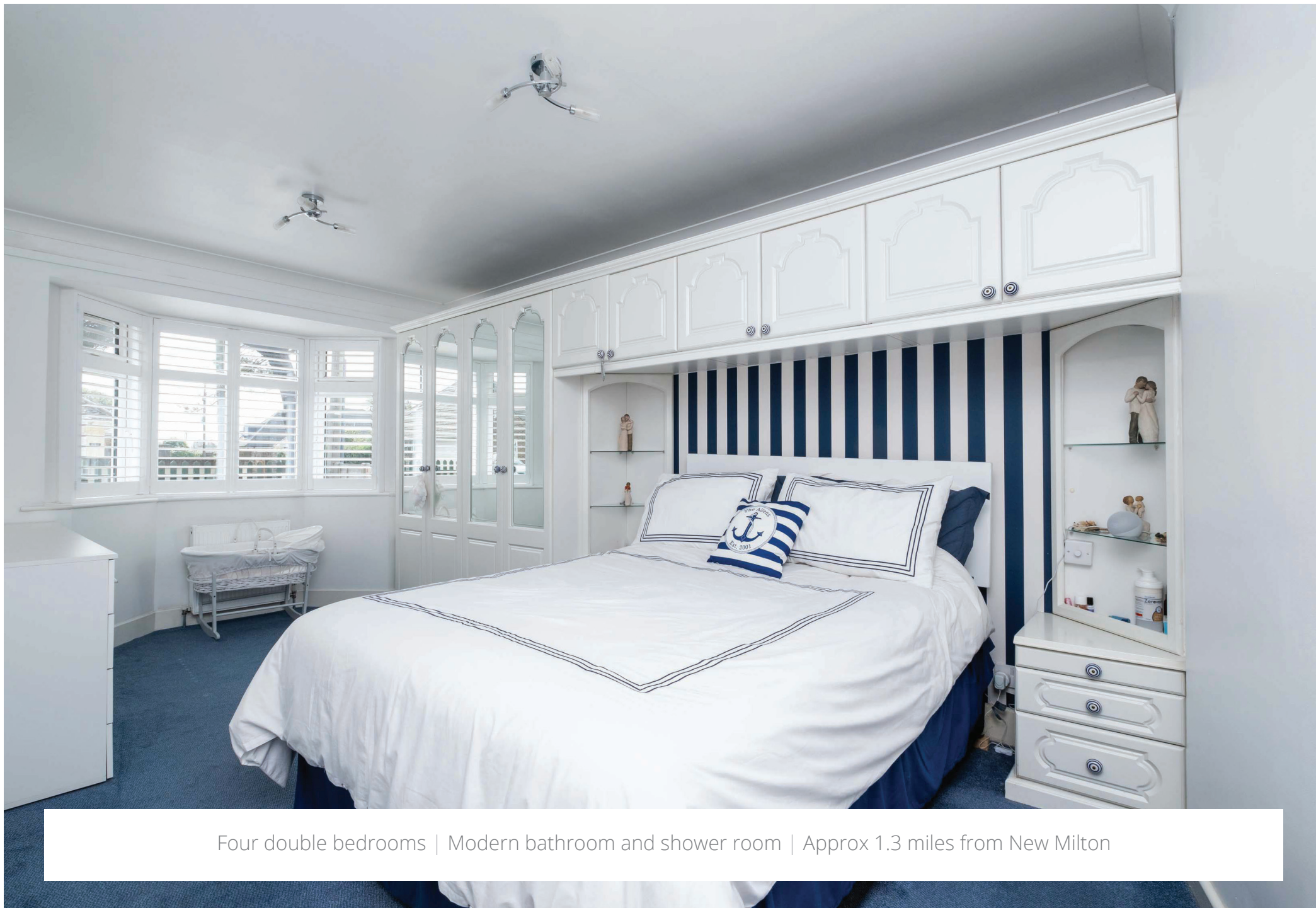
We love the space and layout of this home and the peaceful garden and summer house is lovely all year round. Barton cliff top is also close by, with its beautiful walks, great cafés and restaurants.

*Seller's insight*





Spacious and flexible accommodation | Open plan kitchen/dining/family room | Separate living room

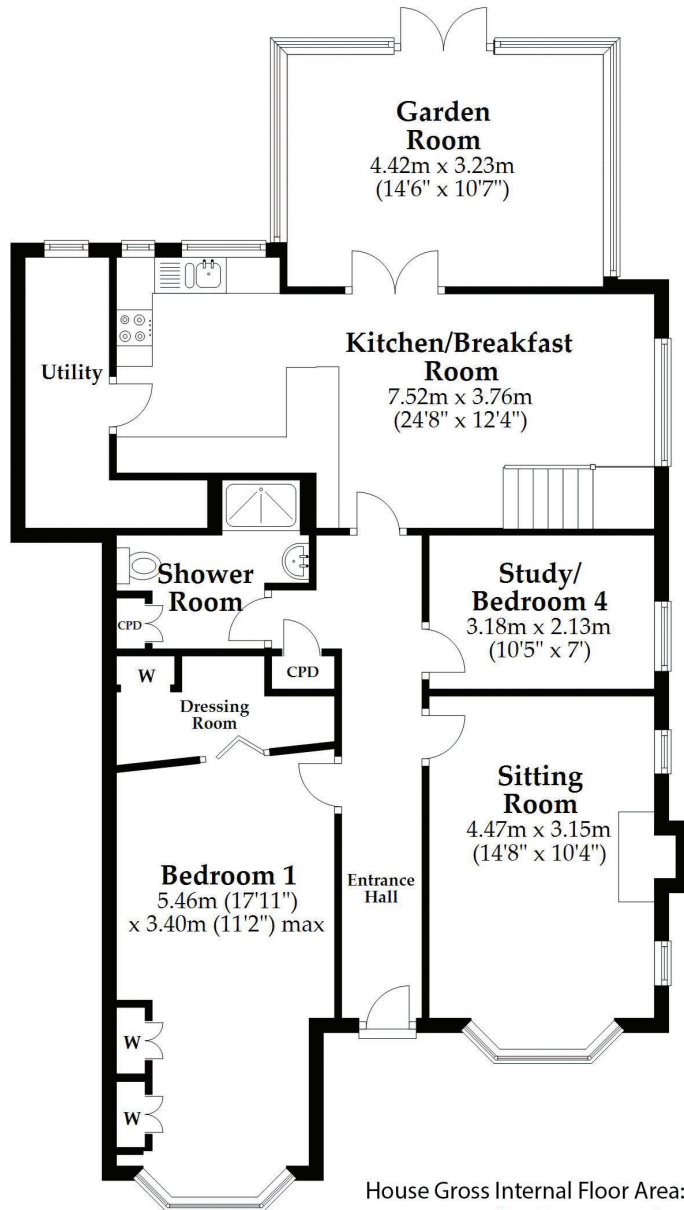


Four double bedrooms | Modern bathroom and shower room | Approx 1.3 miles from New Milton

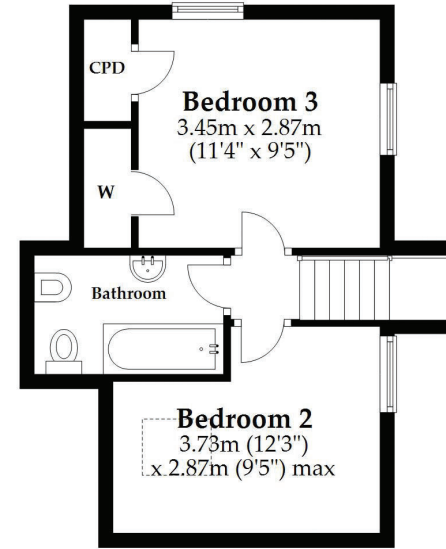


Conservatory/Garden room | Secluded and easily maintained rear garden | Garage, workshop and summer house

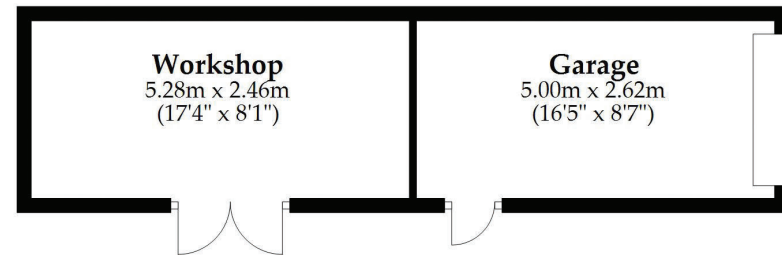
## Ground Floor



## First Floor



## Outbuilding



House Gross Internal Floor Area: approx. 141.9 sq. metres (1527 sq. feet) Excludes Outbuilding

This plan is not to scale and it is for general guidance only. LJT Surveying Ltd Ringwood





A beautifully presented four bedroom detached chalet bungalow, situated in a highly sought after coastal location. The property is approximately 0.5 miles from Barton on Sea cliff top with its far reaching views across to the Isle of Wight, coastal paths and award winning beaches. The town of New Milton with its wealth of high street shops, doctors surgeries, dentists, schools, and main line train station is just 1.3 miles away. A regular bus service is also available with the nearest stop approximately 200 yards from the property.



# HIVE

**HIVE & Partners**, The Hive, Wilson House, 2 Lorne Park Road, Bournemouth BH1 1JN  
01202 122 002 | [www.hiveandpartners.co.uk](http://www.hiveandpartners.co.uk)