



Greenstead Road, Colchester

£1,200 Per Calendar
Month



- Available November
- Two bedroom house found in popular residential location
- Close to railway station and City Centre
- Lovely size lounge and separate dining room
- Fitted kitchen
- 1st floor bathroom and two well proportioned bedrooms
- Well maintained courtyard style rear garden



*****UNEXPECTEDLY BACK AVAILABLE *** ***** AVAILABLE
NOVEMBER*****

Two bedroom house located close to Colchester City Centre and railway station. Accommodation boasts lovely size lounge, separate dining room and newly fitted kitchen. First floor is home to two well proportioned bedrooms and spacious four piece bathroom. Externally the property has a delightful Courtyard style rear garden with shingled seating area.

Lounge 9'8 x 9'8 double glazed window to front. Brick built fireplace. Stripped wooden flooring. Smooth ceiling with spot lighting.

Dining room 9'8 x 9'8 gives access to garden via French double glazed doors. Continuation of flooring. Stairs lead to first floor accommodation.

Newly fitted kitchen 9'8 x 3'2 double glazed window. Range of wall and base mounted units with matching storage drawers. Complimentary wooden style worksurfaces with upstands housing sink drainer with swan neck mixer tap. Part tiling to walls. Hob, oven and extractor hood to remain. Double glazed window. Wooden style flooring.

First floor is home to two bedrooms and family four piece bathroom.

Bedroom one 9'8 x 9'8 double glazed window to front.

Bedroom two 9'8 x 6'5 double glazed window to rear.

Spacious four piece bathroom comprises white panel bath, shower cubicle. wash hand basin and low level wc. Part tiling to walls. Obscure double glazed window.

Externally the property has a delightful Courtyard style garden. Paved with shingled seating area.

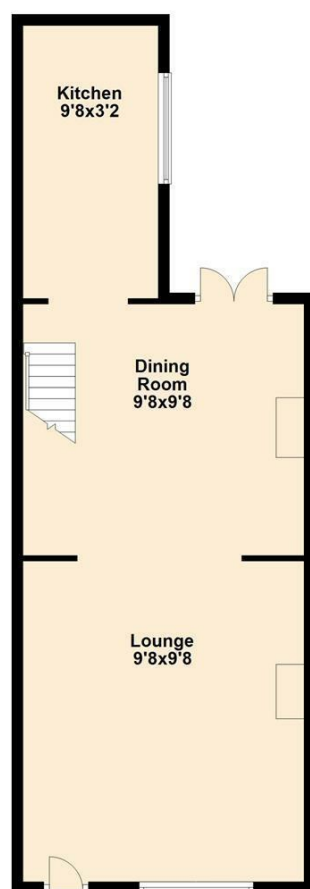


Local Life

Colchester is a town in the county of Essex. In the Castle Park, Colchester Castle is a huge Norman keep, built on the foundations of a Roman temple. Its museum displays artefacts up to 2,500 years old. Also in the park is Hollytrees Museum, a Georgian townhouse displaying 3 centuries of clothing, clocks and decorative arts. Nearby, in the Dutch Quarter, are the remains of a Roman theatre. Town Centre offers a variety of shops, pubs and restaurants. Railway station, the famous Colchester Zoo and A12 road links near



Ground Floor



First Floor



