



## Chelmer Road, Chelmsford

Offers Over £250,000



- No onward chain
- Immaculate through-out
- Ideal for local shops
- Gas central heating
- Fantastic storage
- Four piece bathroom
- Ideal for City centre access
- Open plan living
- Approx. 106 years on lease
- Top floor

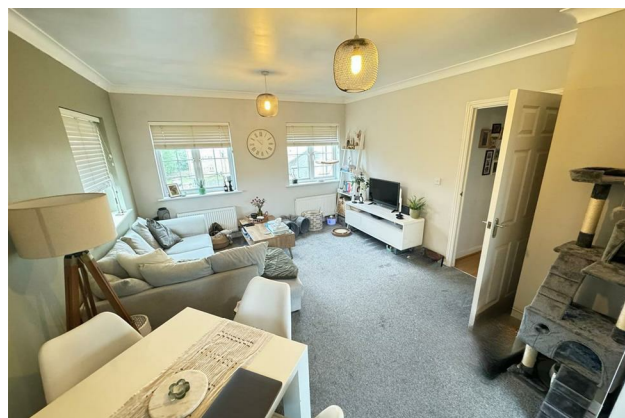


Welcome to this charming two-bedroom flat located on the top floor of a well-maintained building on Chelmer Road, Chelmsford. This property boasts a prime location just a short distance from the vibrant Chelmsford city centre, providing easy access to the train station and major road links.

As you step into this immaculate flat, you'll be greeted by a warm and inviting atmosphere. The interior is beautifully maintained throughout, offering a spacious lounge/kitchen perfect for relaxing or entertaining guests. With gas central heating, you can stay warm and comfortable all year round.

One of the standout features of this property is the convenience it offers. Whether you're commuting to work or exploring the city, the proximity to the train station and road links makes travel a breeze.

What sets this flat apart is the fact that it comes with no onward chain, providing a smooth and hassle-free buying process. Don't miss out on the opportunity to own this lovely flat in a sought-after location. Contact us today to arrange a viewing and make this property your new home!



# Local Life



**APPROX INTERNAL FLOOR AREA**  
**54 SQ M 585 SQ FT**  
This floor plan is intended as a guide  
to layout and is  
**NOT TO SCALE**





