



## Canewdon Road, Westcliff-On-Sea

£3,100 Per Calendar  
Month



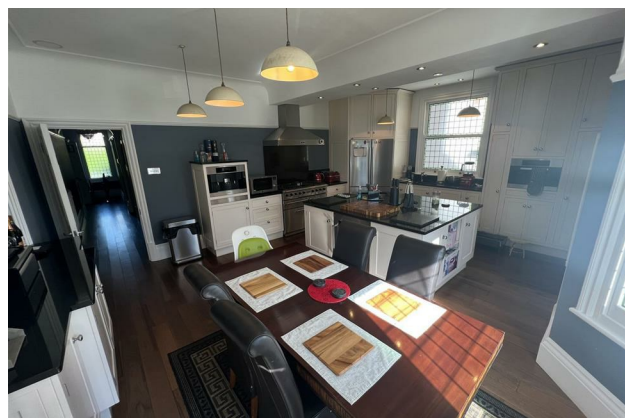
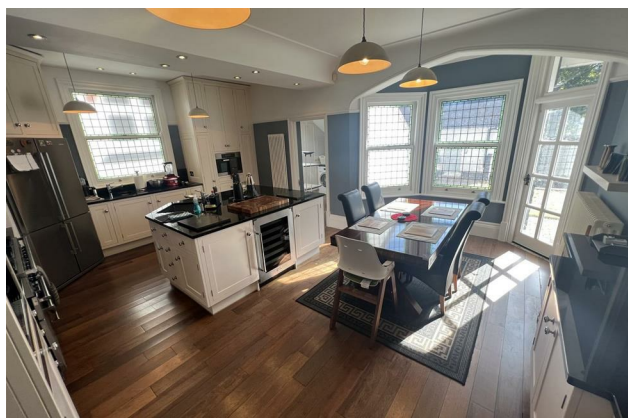
- Fantastic character property - approx. 1903 build
- Truly immaculate through-out
- Three large reception rooms
- Impressive kitchen/diner with separate utility room
- Two separate gardens
- Detached garage and off street parking
- Moments from Westcliff-on-Sea train station (Direct to London Fenchurch Street)
- Moments from Hamlet Court Road
- Four great size bedrooms with en-suite to master
- Internal inspection a must to fully appreciate this stunning property



**This simply stunning and unique property is available to rent for the first time.**

**Having been lovingly presented and maintained with no expense spared by the current owner the property offers a wealth of space and features that can only be appreciated via an internal viewing.**

The property is entered through an impressive entrance hall that contains the ground-floor cloakroom and gives access to the first of the reception rooms (14'1 x 12'7). There is an inner hallway that provides access to the spacious open plan lounge/diner (lounge area 18'1 x 15'11 / dining area 12'8 x 12'1) stunning kitchen/diner that has central island, range cooker, coffee machine and wine fridge (20'8 x 18'10) (the utility room (8'7 x 8'6) is also accessed through the kitchen) and the final reception room (16'1 x 9'6) which is currently used as a study. The first floor holds the four spacious bedrooms (15'6 x 15'1, 15'4 x 13'8, 11'3 x 11'2 and 14'9 x 9'3) the largest of which has an en-suite and a huge 4 piece bathroom suite. Externally there are 2 separate gardens, 1 over looked by a large balcony area. Fully detached garage and off street parking.



# Local Life





