

MORGAN H LEWIS



Asking Price £125,000

Halliwell Heights, Preston PR5 4NT

- *Well Laid Out Apartment
- *Two Well Proportioned Bedrooms
- *Ensuite Shower Room
- *Family Bathroom
- *Open Plan Lounge, Kitchen/Dining Area

MORGAN H LEWIS



MORGAN H LEWIS

A thoughtful and well-laid-out two-bedroom home, quietly positioned within a popular development in Walton-Le-Dale.

This flat offers a sense of space and practicality, with an open-plan kitchen and dining area at its core — a layout that suits both everyday living and relaxed entertaining. The space feels connected and welcoming, with clean lines and natural flow.

There are two well-proportioned bedrooms, including a main bedroom with the benefit of its own ensuite shower room — a small but valuable touch that adds comfort and privacy. A separate family bathroom serves the rest of the home.

Outside, a tandem parking space provides room for two vehicles, and the surrounding development is well-kept and quietly popular — a modern community with everything you need close by, including shops, schools, and transport links.

This is a home that's been designed to work well — a simple, spacious layout, easy to live in, easy to maintain. Ideal for those looking for a calm and considered base in a well-connected location.

MORGAN H LEWIS

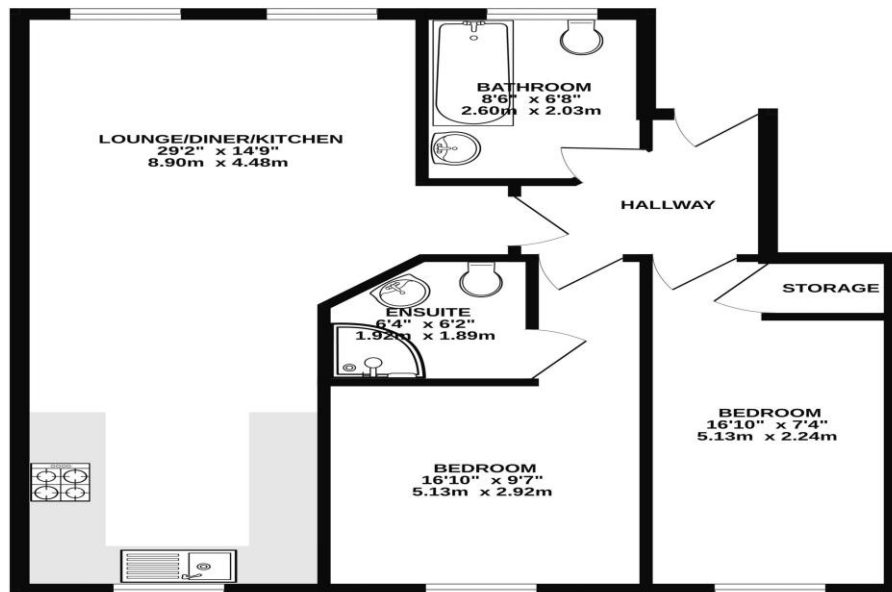


MORGAN H LEWIS



MORGAN H LEWIS

GROUND FLOOR
694 sq.ft. (64.5 sq.m.) approx.



TOTAL FLOOR AREA : 694 sq.ft. (64.5 sq.m.) approx.
Whilst every attempt has been made to ensure the accuracy of the floorplan contained here, measurements of doors, windows, rooms and any other items are approximate and no responsibility is taken for any error, omission or mis-statement. This plan is for illustrative purposes only and should be used as such by any prospective purchaser. The services, systems and appliances shown have not been tested and no guarantee as to their operability or efficiency can be given.
Made with Metropix ©2025

