

# MORGAN H LEWIS



Asking Price £425,000

**Whitley Crescent, Wigan WN1 2PP**

\*Sought After Location

\*Walking Distance to Haigh Hall & Mesnes Park

\*Beautifully Refurbished

\*Stunning Open Plan Kitchen Diner

\*Ample Off Road Parking



# MORGAN H LEWIS



# MORGAN H LEWIS

Set along one of Whitley's most desirable streets, this traditional three-bedroom bay-fronted detached home has recently undergone a full refurbishment, carefully blending its original character with modern style and comfort.

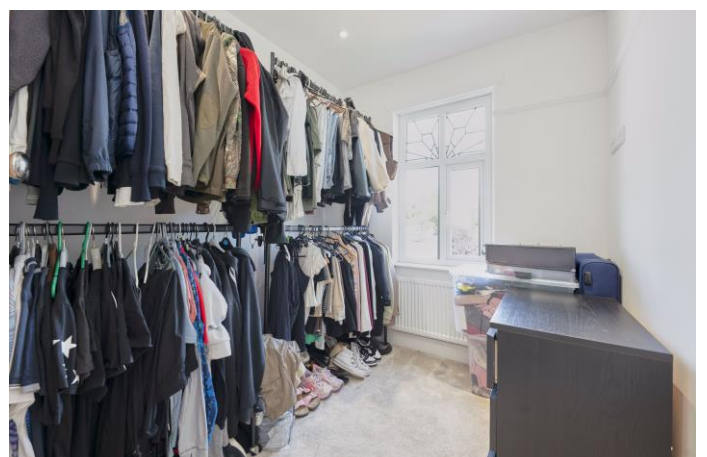
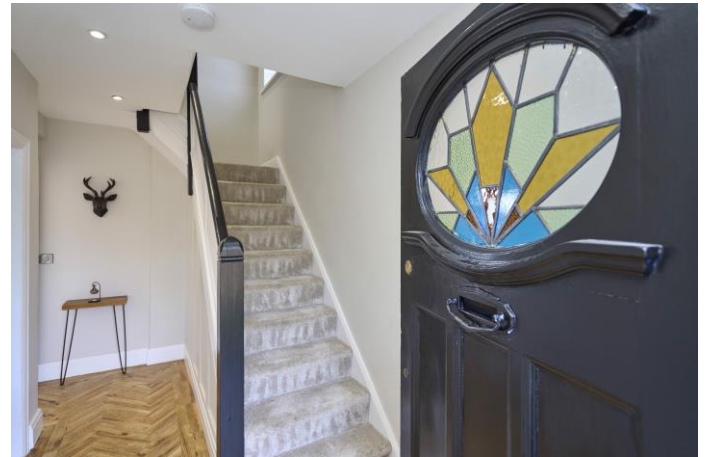
The result is a bright and welcoming family home that feels both timeless and up to date. Key features like the original leaded light front door have been retained, while impressive modern touches—such as a newly extended kitchen with granite worktops, Velux roof lights, and large bi-fold doors—bring fresh life to the property. Natural light fills the main living spaces, which have been opened up to create a flowing layout ideal for family life. The ground floor includes a warm and comfortable lounge with a bay window, a handy cloakroom tucked under the stairs, and the standout kitchen/dining area that connects effortlessly to the rear garden.

Upstairs, there are three well-proportioned bedrooms, all filled with natural light, along with a beautifully updated four-piece bathroom featuring a freestanding bath, walk-in shower, vanity unit, and tasteful tiling throughout. Outside, the home offers off-road parking to the front behind a classic red brick wall, a second driveway leading to a rear garage, and a private rear garden with neat lawns and a peaceful outlook.

Located just a short drive from the amenities of Standish and Wigan, and within easy reach of well-regarded schools and motorway links, this is a well-crafted family home in a sought-after setting—thoughtfully updated and ready to move into.



# MORGAN H LEWIS





# MORGAN H LEWIS



# MORGAN H LEWIS

