

MORGAN H LEWIS



Asking Price £289,950

Easton Close, Wigan WN3 5RW

- *Stunning Detached Property
- *Desirable Cul de Sac Location
- *Three Good Sized Bedrooms
- *Open Plan Lounge/Kitchen/Dining Room
- *En Suite Shower Room

MORGAN H LEWIS



MORGAN H LEWIS

Morgan H Lewis are delighted to offer for sale this three bedroom detached house situated within a desirable cul de sac in a much sought-after residential area. The property is well placed for access to local shopping and schooling, easy access to Wigan and the M6 Motorway and a short walk to Scotsman's Flash.

The property is centrally heated and double glazed and offers beautifully presented accommodation. To the ground floor there is a generous porch and entrance hallway leading to the stunning open plan lounge/kitchen/dining room fitted with a range of modern wall and base units incorporating a gas hob, oven, microwave, fridge freezer and dishwasher. To the rear of the property is the light and airy conservatory. Completing the ground floor is the handy utility room and integral garage.

To the first floor there are three good sized bedrooms of which the main benefits from an en-suite shower room. Completing the first floor is the modern fitted family bathroom. To the outside there is a double paved driveway whilst to the rear is a fantastic landscaped garden with paved seating areas, a lawn and raised planters.

Viewings are essential to appreciate both the location and the quality of the accommodation on offer.

MORGAN H LEWIS

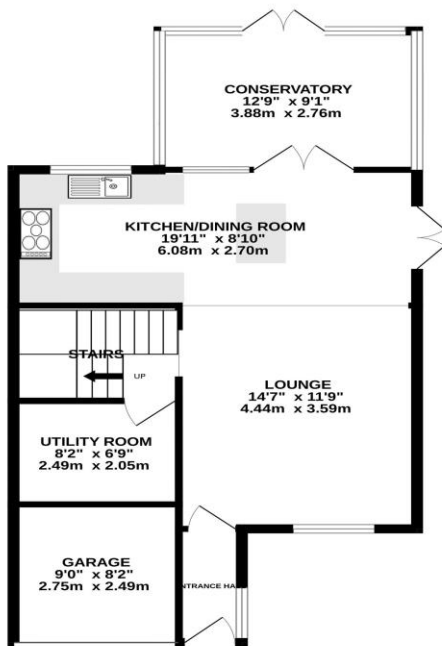


MORGAN H LEWIS

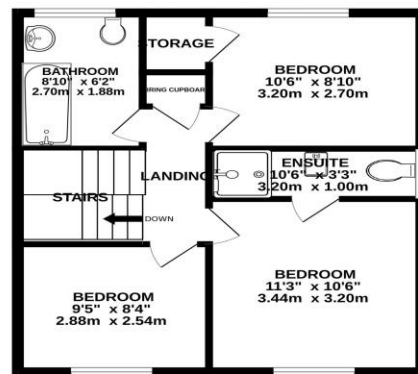


MORGAN H LEWIS

GROUND FLOOR
666 sq.ft. (61.9 sq.m.) approx.



1ST FLOOR
467 sq.ft. (43.4 sq.m.) approx.



TOTAL FLOOR AREA: 1134 sq.ft. (105.3 sq.m.) approx.

Whilst every attempt has been made to ensure the accuracy of the floorplan contained here, measurements of doors, windows, rooms and any other items are approximate and no responsibility is taken for any error, omission or mis-statement. This plan is for illustrative purposes only and should be used as such by any prospective purchaser. The services, systems and appliances shown have not been tested and no guarantee as to their operability or efficiency can be given.

Made with Metropix ©2025

